



**CAMERON COUNTY PURCHASING**

1100 E. Monroe St,  
Brownsville, Texas 78520  
(956) 544-0871 Fax: (956) 550-7219

**ADDENDUM # 1 - PAGE 1 of 9**

**Date out: 8-19-22**

**“CSP”- COMPETITIVE SEAL PROPOSAL TITLE:  
CAMERON COUNTY TAX ASSESSOR COLLECTOR’S  
NEW SOUTHMOST OFFICE CONSTRUCTION BROWNSVILLE, TX**

**CSP # 220501**

**DEADLINE: AUGUST 25, 2022**

***(IN ORDER TO AVOID DISQUALIFICATION – ALL ADDENDUMS MUST BE SIGNED AND RETURNED BY DEADLINE AND INCLUDED IN THE SEALED PROPOSAL PACKAGE SUBMITTED)***

**This addendum is issued to modify the plans and specifications for the project. This addendum shall become part of the contract documents and all contractors shall be bound by its content. All aspects of the specifications and drawings not cover herein remain the same.**

Company Name \_\_\_\_\_ Phone # \_\_\_\_\_

Vendor Signature \_\_\_\_\_ Date \_\_\_\_\_

***Must include and return with CSP package***



August 19, 2022

ADDENDUM # 1  
CSP# 220501

**CAMERON COUNTY TAX ASSESSOR COLLECTOR'S NEW SOUTHMOST OFFICE**  
Southmost Road, Brownsville, Texas

This Addendum is issued to modify the plans and specifications for the project referenced above. This Addendum shall become a part of the contract documents and all contractors shall be bound by its content.

All aspects of the specifications and drawings not covered herein shall remain the same.

The General Conditions and Special Conditions of the Project Manual shall govern all parts of the work and apply in full force to this Addendum.

Instructions:

1. The Bank Equipment and Security System shall be paid by the Owner and installation coordinated by General Contractor.
2. Existing perimeter fence can remain as security fence during construction and removed at end of the work .
3. Brownsville ISD property and work on same:
  - a. GC to introduce themselves to BISSD and coordinate access, working hours and other restrictions prior to working on BISSD property.
  - b. GC to finish the work on BISSD property within one month or sooner to minimize time on BISSD property
  - c. Cedar fence between BISSD property and Tax Office property to be installed early in construction.
  - d. Install an access gate into the retention pond area for BISSD. Coordinate location of gate with BISSD.
  - e. Do not store materials other than fence material on BISSD property.
4. Mechanical Yard dimensions are approximate and will be adjusted to conform to the manufacturer's requirements.
5. Canopy Manufacturer to be approved by Architect and Structural Engineer.
6. Quartz/Granite (Specification Section 123610-Quartz Agglomerate Countertops) allowance to be Ten (10\$) Dollars per square foot.

7. Use undermount sinks in Restroom Vanities and Breakroom. See MEP attachments below.
8. The monument sign along with the county and Tax Assessors seal castings are a part of the base bid and shall not be a part of the signage allowance.
9. GC shall be responsible for two (2) flagpoles as per the drawings, not 3 as specified in section 103500 of the project manual.
10. Provide two (2) fire extinguishers, in locations shown on the Drawings, in lieu of 6 as specified.

Drawings:

1. A2.20 Cameron County Seal and Tax Assessor Collector Seal to be manufactured by Pineapple Grove in Florida. The County Seal casting mold is already made and the Tax Office Seal requires a new mold. See Drawings A8.00 for details
2. A3.00 Brick to match Old Fort Brown in Brownsville with today's code requirement for low water absorption and high PSI. Manufacturer Belden Brick through ACME Brick.
3. Window H on sheet A2.10 shall be a stainless steel frame instead of an anodized aluminum frame. Window shall be provided as part of the bank equipment.
7. All entry canopy detail notes referring to the main entry canopy manufacturer products shall be changed from Mapes Super Lumideck to match the specification of Mapes Lumishade.
8. A4/A2.10 Door and Window Elevations- Door Elevation C – The shading representing the sidelight glazing shall extend to the bottom of the sill frame.
9. See MEP attachments for MEP addendum items as follows:
  - Ethos Seal Page – Dated August 18, 2022.
  - Sheet E5.20 – Lutron Shades One-Line Diagram, dated August 18, 2022
  - Sheet P4.10 – Plumbing Schedules and Details
  - Sheet P4.20 - Plumbing Schedules and Details



END OF ADDENDUM #1



1126 South Commerce  
Harlingen, TX 78550  
Off: (956) 230-3435  
Fax: (956) 720-0830  
[www.ethoseng.net](http://www.ethoseng.net)



August 18, 2022  
Cameron County Tax Assessor Office

## **ADDENDUM NO. 1**

### **A. PURPOSE AND INTENT**

This addendum is issued for the purpose of modifying the plans for the project referenced above. This addendum shall become part of the contract and all contractors shall be bound by its content. All aspects of the specifications and drawings not covered herein shall remain the same. The General Conditions and the Special Conditions of the specifications shall govern all parts of the work and apply in full force to this addendum.

### **B. SCOPE**

#### **I. Drawings:**

1. Sheet E4.10:
  - a) Clarification: Motorized shade power and corresponding switch shown on plans are for Mecho shades. Omit/deduct power and corresponding switch if Lutron shades are provided.
2. Sheet E5.20:
  - a) Lutron Shades One-Line Control Diagram. See attached added sheet.
3. Sheet P4.10:
  - a) Revised L-1 on plumbing schedule to an undermounted sink. See attached added sheet.
4. Sheet P4.20:
  - a) Revised L-1 fixture image. See attached added sheet.

THESE DRAWINGS AND SPECIFICATIONS ARE AND SHALL REMAIN THE PROPERTY OF THE ARCHITECT. THEY MAY NOT BE REUSED, REPRODUCED OR ALTERED IN ANY WAY WITHOUT PRIOR WRITTEN APPROVAL FROM AND WITH APPROPRIATE COMPENSATION TO THE ARCHITECT.

**K+ architect**  
61 BETHPAGE DR  
LAGUNA VISTA, TX 78566  
Phone: (956) 434-9535

**Boutinhouse Simpson Gates Architects**  
3301 N. McCOLL RD | McALLEN, TX 78501 | P. 956.630.2658



06.15.2022

**SHEET TITLE**  
LUTRON SHADES ONE-LINE DIAGRAM

**PROJECT NAME**  
CAMERON COUNTY TAX ASSESSOR OFFICE

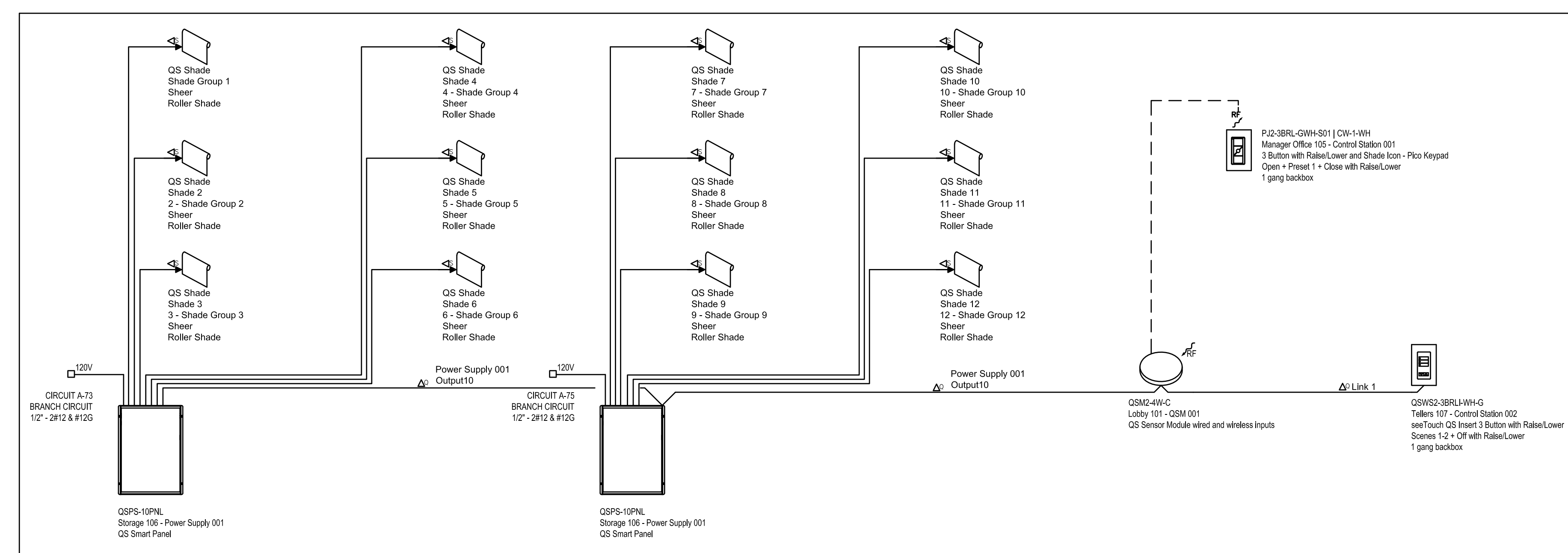
**OWNER**  
CAMERON COUNTY

**PROJECT ADDRESS**  
BROWNSVILLE, TEXAS

**ISSUE DATE**  
JUNE 15, 2022

<b>PROJECT NO</b>	2130
<b>REVISIONS</b>	
ADD	08/18/2022

**SHEET NUMBER**  
E5.20



**ONE-LINE**

**WIRE LEGEND**

- ▲ QS CONTROL LINK (CONNECT WIRES 1, 2, 3 AND 4)\*
- ▲ QS CONTROL LINK (CONNECT WIRES 1, 3 AND 4. DO NOT CONNECT WIRE 2)\*
- ▽ PANEL CONTROL LINK (CONNECT WIRES 1, 2, 3, 4 AND 5)\*
- ▽ PANEL CONTROL LINK (CONNECT WIRES 1, 2, 3 AND 4. DO NOT CONNECT WIRE #5)\*
- ▷ PANEL CONTROL LINK (CONNECT WIRES 1, 3, 4 AND 5. DO NOT CONNECT WIRE #2)\*
- ◀ QS SIVOIA SHADE CONTROL LINK\*
- ▲ BELDEN CABLE 1387LA(OR EQUIVALENT)
- NORMAL INPUT POWER 2 #12 AWG (4 SQ MM) + GROUND
- NORMAL-EMERGENCY INPUT POWER 2 #12 AWG (4 SQ MM) + GROUND
- ⊙ 3 PHASE 4 WIRE INPUT POWER, 4 #12 AWG (4 SQ MM) + GROUND
- 2 #12 AWG (4 SQ MM) + GROUND
- 3 #12 AWG (4 SQ MM) + GROUND
- ◇ 0-10 V SIGNAL; 2#18AWG (1.0 SQ MM)
- ◆ 2#18 AWG (1.0 SQ MM)
- ∞ 3#18 AWG (1.0 SQ MM)
- ◇ ECOSYSTEM BUS/LOOP\*
- ◇ DALI LOOP
- ◇ T-SERIES TUNABLE-WHITE LOOP
- ✕ LUTRON SENSOR CABLE C-CBL-5225 OR USE #22 AWG (1.0 SQ MM)
- ✕ LUTRON SENSOR CABLE C-CBL-5225 OR USE #22 AWG (1.0 SQ MM)
- Ⓜ DMX CABLE. USE LUTRON GRX-CBL-DMX-250/GRX-CBL-DMX-500 OR BELDEN #9729 (NON-PLENUM) OR BELDEN #8979 (PLENUM) OR DURA FLEX 22/4 WA CABLE.
- Ⓜ ETHERNET CABLE. CAT5E OR BETTER CABLE FOR LUTRON NETWORK TERMINATED WITH RJ45 CONNECTORS (NOT PROVIDED BY LUTRON). 328 FT (100 M) MAXIMUM RUN.
- Ⓜ FIBER OPTIC CABLE FOR LUTRON NETWORK TERMINATED WITH APPROPRIATE FIBER OPTIC CONNECTORS (NOT PROVIDED BY LUTRON). REQUIRES DEDICATED FIBER OPTIC LINK (SINGLE-MODE OR MULTI-MODE)
- - - RF CONNECTION
- WIRED CONNECTION

\*PLEASE REFER TO NOTES ON WIRING FOR MORE WIRING GUIDELINES.  
\*\*REFER TO LOAD SCHEDULE FOR FEED AND LOAD INFORMATION

**PROJECT NAME:**

CC TAX ASSESSOR OFFICE

**LOCATION:**

BROWNSVILLE, TEXAS

**PROJECT NUMBER:**

**CREATED BY:**

ETHOS ENG.

**FILE NAME:**

**DOCUMENT REVISION:**

AUGUST 17, 2022 | Sheet 1 OF 1

FOR DETAILED DEFINITION OF PRODUCT CAPABILITIES REFER TO PRODUCT SPECIFICATION SUBMITTAL SHEETS.

▲ NOT FOR CONSTRUCTION



7200 SUTER ROAD  
COOPERSBURG, PA 18036, USA  
+1.610.282.3800 | FAX: +1.610.282.1146

**LUTRON SHADES ONE-LINE CONTROL DIAGRAM**  
01 SCALE : NOT TO SCALE



**LUTRON QSPS-10PNL IMAGE**  
02 SCALE : NOT TO SCALE



**LUTRON QSPS-10PNL IMAGE**  
03 SCALE : NOT TO SCALE



**LUTRON QSPS-10PNL IMAGE**  
04 SCALE : NOT TO SCALE



**LUTRON PJ2-3BRL IMAGE**  
05 SCALE : NOT TO SCALE

### PLUMBING FIXTURE SCHEDULE

MARK	MANUFACTURER & MODEL NUMBER	DESCRIPTION	CONNECTIONS					REMARKS
			WASTE	VENT	CW	HW	NOTES	
WC-1	AMERICAN STANDARD 3461.001 5901.100 SEAT (1" THICK) SLOAN ROYAL #8111-1.28	17-19" FLOOR-MOUNTED, HIGH LOW CONSUMPTION BATTERY POWERED TOUCHLESS FLUSHOMETER, ELONGATED BOWL, HIGH EFFICIENCY, LOW CONSUMPTION FLUSH VALVE, WHITE VITREOUS CHINA WATER CLOSET WITH SIPHON JET ACTION BOWL, 1.28 GPF TOP FLUSH VALVE, WHITE OPEN FRONT TOILET SEAT LESS COVER AND BOLT CAPS. ADULT ADA MOUNTING.	4"	2"	1"	-	1,2,3	17-19" TO TOP OF SEAT
L-1	KHOLER K-2210-0 SLOAN EBF-650-BAT-AER-BDT-0.5GPM-CP-ADA 17 GA. DRAIN AND 17 GA. P-TRAP W/CLEAN OUT	17" x 14" OVAL UNDER MOUNTED SINK, WHITE VITREOUS CHINA LAVATORY WITH FRONT OVERFLOW, HOLES 4" ON CENTER ON VANITY FOR SINGLE LEVER FAUCET, CHROME PLATED SUPPLY STOPS WITH STAINLESS STEEL FLEXIBLE CONNECTORS, CHROME PLATED DRAIN GRID AND TAILPIECE. DECK MOUNTED, TOUCHLESS BATTERY POWERED SENSOR FAUCET WITH 4" FIXED CENTERS WITH BELOW DECK MOUNTED THERMOSTATIC MIXING VALVE, SET AT NO MORE THAN 105 DEGREES FAHRENHEIT.	2"	2"	1/2"	1/2"	-	SEE ARCHITECTURAL
SK-1	ELKAY LRAD-1919-60-2 SINK CHICAGO FAUCET, 5 GPM # 1100-GN2AE3-317ABCP LK-335 DRAIN LEONARD # 270-LF-BRKT-BV 0.5GPM AERATOR	19" x 19" SINGLE COMPARTMENT, 18 GAUGE TYPE 302 STAINLESS STEEL, SELF-RIMMING SINK WITH 6" DEEP BOWL, FULLY COATED UNDERSIDE, TWO HANDLE DECK MOUNT GOOSE NECK FAUCET, 3.5" DRAIN WITH CUP STRAINER, 1-1/2" 17 GAUGE CHROME PLATED TAILPIECE AND P-TRAP WITH CLEANOUT AND CHROME PLATED SUPPLY STOPS WITH STAINLESS STEEL FLEXIBLE CONNECTORS AND POINT-OF-USE THERMOSTATIC VALVE.	2"	2"	3/4"	3/4"	-	SEE ARCHITECTURAL
MSB-1	FIAT TSB 1610 FAUCET #830-AA HOSE & HOSE BRACKET #832-AA MOP BRACKET #889-CC WALL GUARD #MSG 2424 STRAINER #1453-BB	24" x 24" x 12" ONE PIECE, PRECAST TERRAZO MOP SERVICE BASIN WITH CONTINUOUS STAINLESS STEEL CAPS ON ALL CURBS, HOSE AND HOSE BRACKET, FAUCET, MOP BRACKET, WALL GUARD AND STRAINER.	3"	2"	3/4"	3/4"	-	
EDF-1	ELKAY LZSTLVR8LC APRON LKAPREZL CARRIER ZURN Z1225-BL	WALL MOUNTED ADA VANDAL-RESISTANT FILTERED, 8.0 GPH STAINLESS STEEL, BI-LEVEL ELECTRIC DRINKING FOUNTAIN, VANDAL-RESISTANT BUBBLERS WITH CHROME PLATED INTEGRAL HOOD GUARD, PVC P-TRAP, INDOOR RATED, APRON AND CARRIER, ADULT STANDARD & ADULT ADA MOUNTING.	2"	2"	3/4"	-	-	SEE ARCHITECTURAL
WH-1	ZURN # Z1300-SS-34UN	ENCASED ANTI-SIPHON AUTOMATIC DRAINING WALL HYDRANT FOR FLUSH INSTALLATION. COMPLETE WITH NON-FREEZE TYPE INTEGRAL BACKFLOW PREVENTER, BRONZE CASING, ALL BRONZE INTERIOR PARTS, NON-TURNING OPERATING ROD WITH FREE-FLOATING COMPRESSION CLOSURE VALVE, REPLACEABLE BRONZE SEAT AND SEAT WASHER, STAINLESS STEEL BOX AND HINGED COVER WITH OPERATING KEY LOCK AND "WATER" CAST ON COVER.	-	-	3/4"	-	-	
FD-1	ZURN # Z415B-ZN TRAP GUARD # TG-33-Z	FLOOR DRAIN BODY ASSEMBLY WITH TYPE B STRAINER, DURA-COATED CAST IRON BODY WITH BOTTOM OUTLET, COMBINATION INVERTIBLE MEMBRANE CLAMP AND ADJUSTABLE COLLAR WITH SEEPAGE SLOTS. POLISHED NICKEL BRONZE TOP AND WITH TRAP GUARD	3"	2"	-	-	-	
IMB	GUY GRAY BIMB75QTSAB	HOT DIPPED GALVANIZED STEEL 20 GAUGE BOX WITH 20 GAUGE FACEPLATE, FURNISHED WITH 1/2" FIP INLET X 1/4" OD COMPRESSION OUTLET, FURNISHED WITH QUARTER TURN VALVES.	-	-	1/2"	-	-	

- NOTES:
- INSTALL FLUSH VALVE ON THE WIDE SIDE OF STALL.
  - PROVIDE ADA APPROVED FLUSH VALVE HANDLE FOR ALL ADA PLUMBING FIXTURES.
  - PROVIDE BATTERY-POWERED SENSOR OPERATED FLUSH VALVE.

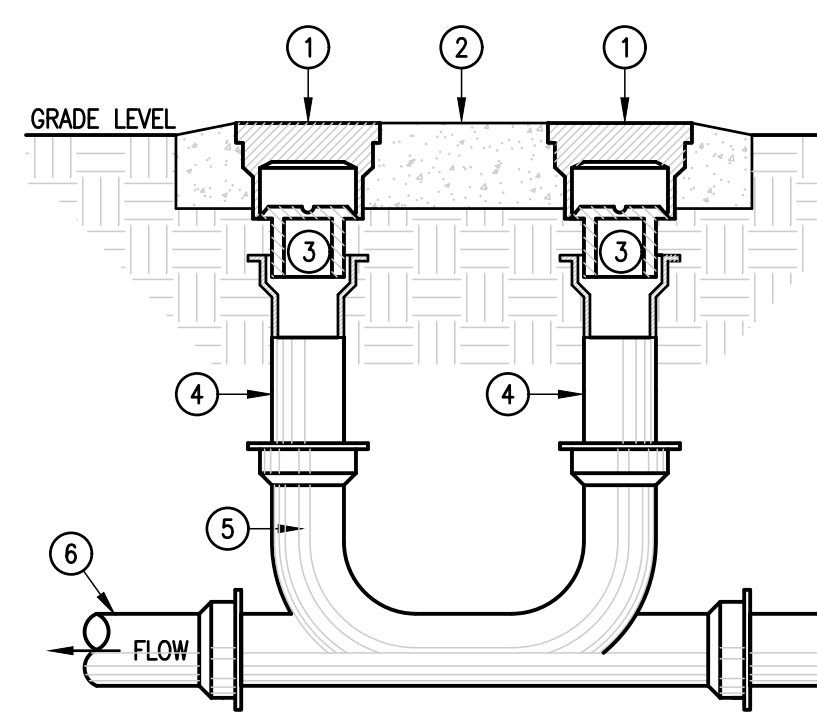
### GENERAL NOTES: (APPLY TO ALL PLUMBING SHEETS)

- ALL PLUMBING WORK SHALL BE IN COMPLIANCE WITH ALL APPLICABLE CODES AS ADAPTED AND AMENDED BY THE INSPECTING AUTHORITIES.
- DRAWING IS DIAGRAMMATIC ONLY. CONTRACTOR SHALL COORDINATE EXACT LOCATIONS OF PIPING, DEVICES AND EQUIPMENT WITH BUILDING ELEMENTS AND THE WORK OF OTHER TRADES.
- ALL PLUMBING WORK SHALL BE INSTALLED SO AS TO AVOID CONFLICT WITH THE WORK OF OTHER TRADES. COORDINATE WITH MECHANICAL, ELECTRICAL AND STRUCTURAL FOR PROPER CLEARANCES.
- REFER TO ARCHITECTURAL DRAWINGS AND SPECIFICATIONS FOR PHASING AND SEQUENCE OF CONSTRUCTION WORK.
- COORDINATE WORK AMONG ALL DISCIPLINES. IT IS NOT THE INTENT OF THESE DOCUMENTS TO DICTATE WHO MUST DO THE WORK. ALL WORK SHOWN IS THE RESPONSIBILITY OF THE PRIME CONTRACTOR.
- SLEEVE ALL OUTSIDE WALLS, FOUNDATION GRADE BEAMS, INTERIOR WALL PENETRATIONS, AND FIRE SEAL ALL PENETRATION THROUGH FIRE WALLS AND FLOORS WHETHER SHOWN ON PLANS OR NOT.
- PROVIDE MINIMUM 15' OF SEPARATION BETWEEN HVAC INTAKES AND VENT THRU ROOFS.
- RECORD INVERT ELEVATIONS OF ALL YARD CLEAN OUT (YCO) ON "AS-BUILT" DRAWINGS.
- PROVIDE SHUT-OFF VALVES (STOPS) ON ALL ROUGH-INS TO FIXTURES AND EQUIPMENTS.
- PROVIDE WATER HAMMER ARRESTORS AS INDICATED ON THE DRAWINGS. AIR CHAMBERS NOT AN APPROVED SUBSTITUTE.
- PROVIDE ANY BACKFLOW PREVENTION DEVICE REQUIRED BY CODE OR LOCAL AUTHORITIES. CONTRACTOR SHALL VERIFY THIS WITH CITY AND LOCAL AGENCIES AND INCLUDE COST IN BID. CONTRACTOR TO HAVE BACK FLOWS CERTIFIED.
- REFER TO PLUMBING FIXTURE ROUGH-IN SCHEDULE FOR INDIVIDUAL PIPE CONNECTIONS TO FIXTURES.
- PRIOR TO POURING FOUNDATION AND ERECTING WALLS, COORDINATE INSTALLATION OF PLUMBING FIXTURE CARRIERS WITH GENERAL CONTRACTOR.
- STUDS AT DRY WALLS SHALL NOT BE CUT THRU HORIZONTAL DIRECTION. COORDINATE WITH DRY WALL CONTRACTOR.
- CONTRACTOR SHALL NOT CUT ANY EXTERIOR WALL STUD.

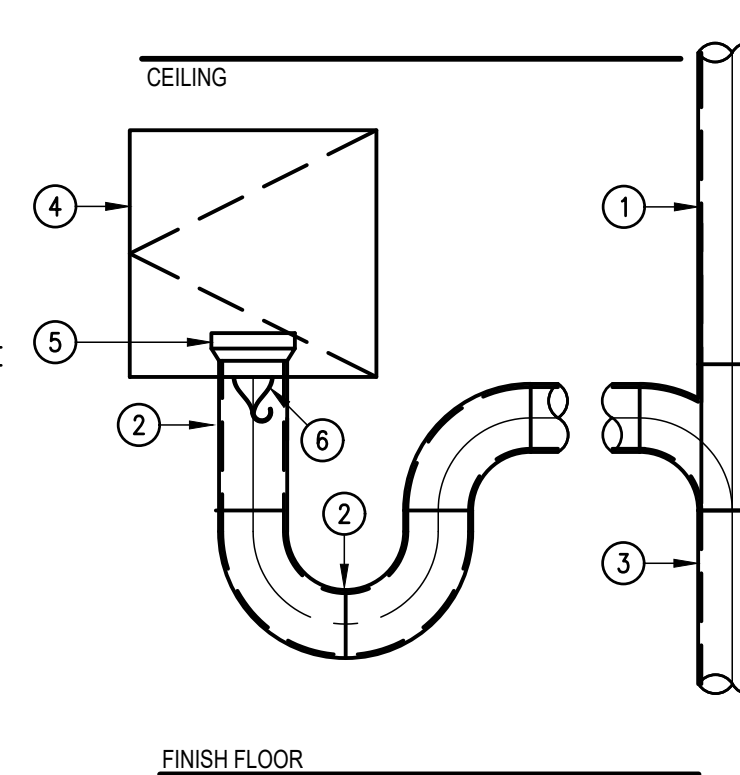
### PLUMBING SYMBOLS LEGEND

SYMBOL	DESCRIPTION	A.F.F.	ABOVE FINISH FLOOR
	COLD WATER SUPPLY	A.F.F.	ABOVE FINISH FLOOR
	HOT WATER SUPPLY	GT	GREASE TRAP
	GAS LINE	S.S.	SANITARY SEWER
	SOIL & WASTE LINE - ENLARGED PLANS	WC	WATER CLOSET
	VENT LINE - ENLARGED PLANS	UR	URINAL
	FLOOR CLEANOUT	L	LAVATORY
	FLOOR DRAIN (FD) WITH DEEP SEAL TRAP	SK	SINK
	FLOOR SINK (FS) WITH DEEP SEAL TRAP	EDF	ELECTRIC DRINKING FOUNTAIN
	HUB DRAIN WITH DEEP SEAL TRAP	MSB	MOP SERVICE BASIN
	YARD CLEANOUT - 2 WAY	EESH	EMERGENCY EYE/SHOWER
	WALL HYDRANT (WH)	TP	TRAP PRIMER
	*WATER HAMMER ARRESTOR (WHA)	EW	ELECTRIC WATER HEATER
	POINT OF CONNECTION	VTR	VENT THRU ROOF
	SECTION VIEW CUT	CO	CLEANOUT
	WYE FITTING	BV	BALL VALVE (BV)
	45° ELBOW FITTING	QZ	QUAZITE BOX WITH GATE VALVE
	90° ELBOW FITTING		

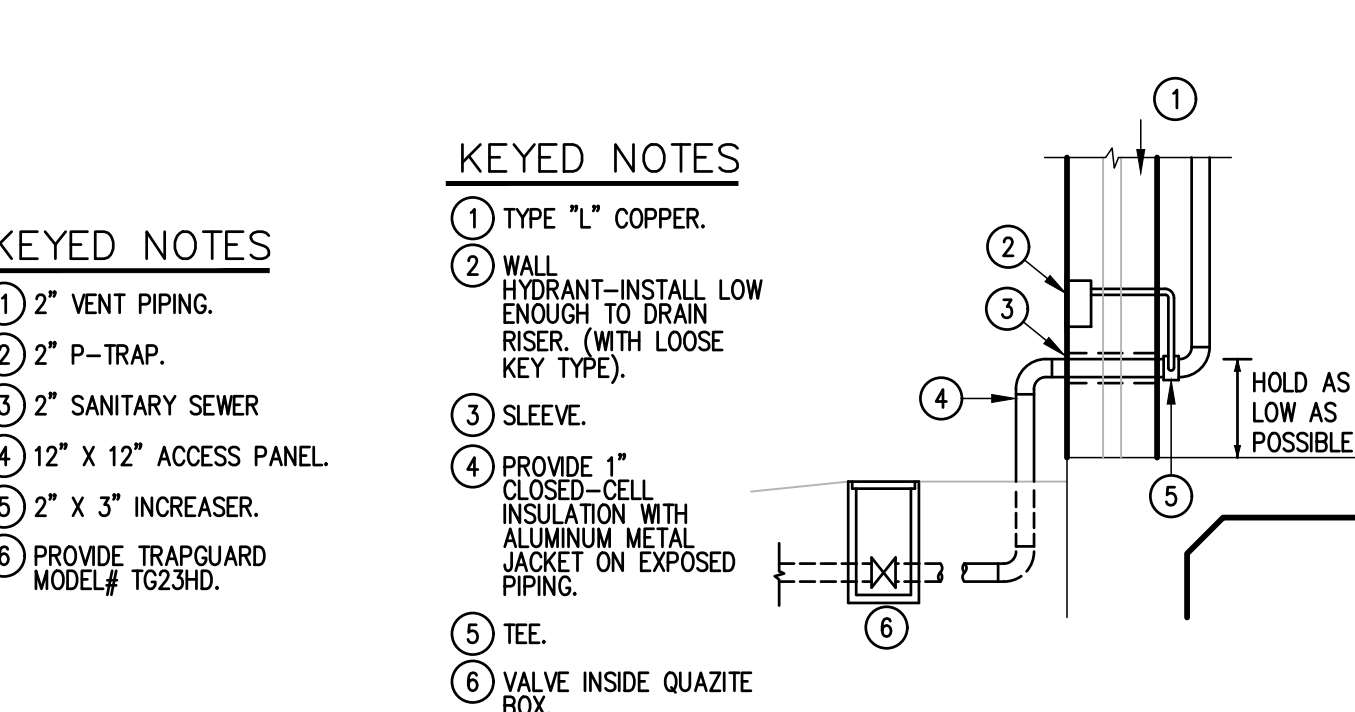
\* PROVIDE 12"x12" ACCESS PANEL WHERE INSTALLED IN AN INACCESSIBLE AREA.



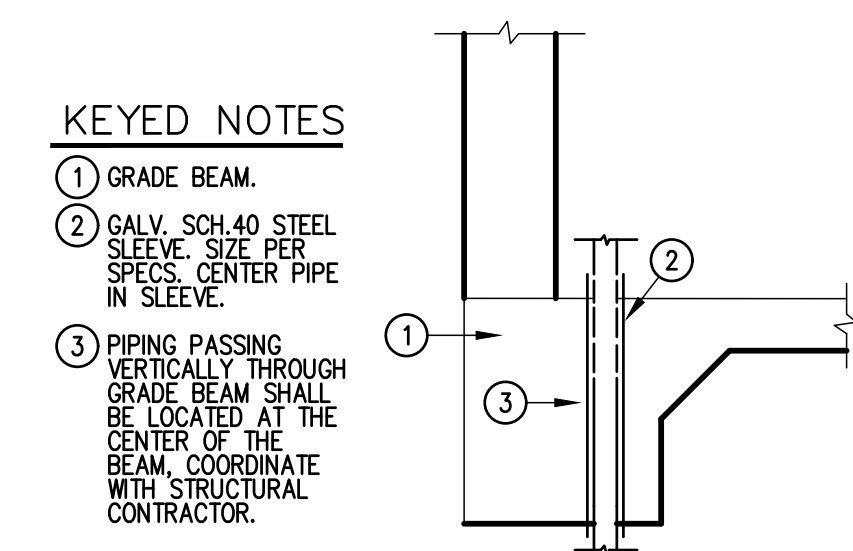
01 2-WAY YARD CLEANOUT DETAIL  
SCALE: NOT TO SCALE



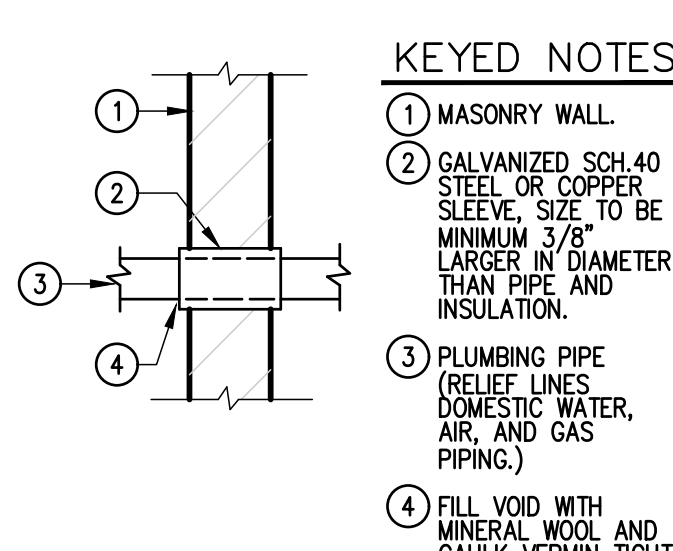
02 HUB DRAIN DETAIL  
SCALE: NOT TO SCALE



03 WATER ENTRANCE DETAIL  
SCALE: NOT TO SCALE



04 GRADE BEAM VERTICAL SLEEVE DETAIL  
SCALE: NOT TO SCALE



05 WALL SLEEVE DETAIL  
SCALE: NOT TO SCALE

### ELECTRIC WATER HEATER

MARK	LOCATION	SERVING	GALLON CAPACITY	KW	NUMBER OF ELEMENTS	RECOVERY IN GPH AT 54F RISE	ELECT. V/P/H	MANUFACTURER & MODEL	NOTES
EW-1	SEE PLANS	SEE PLANS	10	6	1	23	240/1/60	AO SMITH DEL-10-3	1,2

- NOTES:
- MANUFACTURER & MODEL NUMBER ARE AS SPECIFIED OR "APPROVED EQUAL".
  - PROVIDE IMMERSION TYPE THERMOSTAT.

### INSTANTANEOUS ELECTRIC WATER HEATER

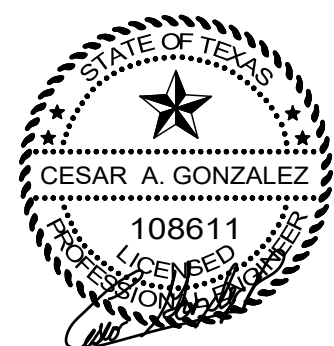
MARK	LOCATION	MINIMUM FLOW RATE GPM	DEGREE RISE AT FLOW RATE	ELECTRICAL V/PH	KW	DIMENSIONS LENGTH X WIDTH	MANUFACTURER MODEL NUMBER	NOTES
IEW-1	SEE PLAN	0.8	41°	240/1	4.8	6.25" X 9.625"	CHRONOMITE M-20L/240	1,2

- NOTE:
- MANUFACTURER AND MODEL NUMBER ARE "OR APPROVED EQUAL".
  - SET TEMPERATURE AT 90 DEGREE.

THESE DRAWINGS AND SPECIFICATIONS ARE AND SHALL REMAIN THE PROPERTY OF THE ARCHITECT. THEY MAY NOT BE REPRODUCED, COPIED, OR ALTERED IN ANY WAY WITHOUT PRIOR WRITTEN APPROVAL FROM AND WITH APPROPRIATE COMPENSATION TO THE ARCHITECT.

**K+ architect**  
61 BETHPAGE DR  
LAGUNA VISTA, TX 78566  
Phone: (956) 434-9535

**Boultinghouse Simpson Gates ARCHITECT**  
3301 N McCOLL RD | MCALLEN, TX 78901 | P 956.630.9484 | F 956.630.2058



06.15.2022

**PLUMBING SCHEDULES AND DETAILS**  
PROJECT NAME: CAMERON COUNTY TAX ASSESSOR OFFICE  
OWNER: CAMERON COUNTY  
PROJECT ADDRESS: BROWNSVILLE, TEXAS

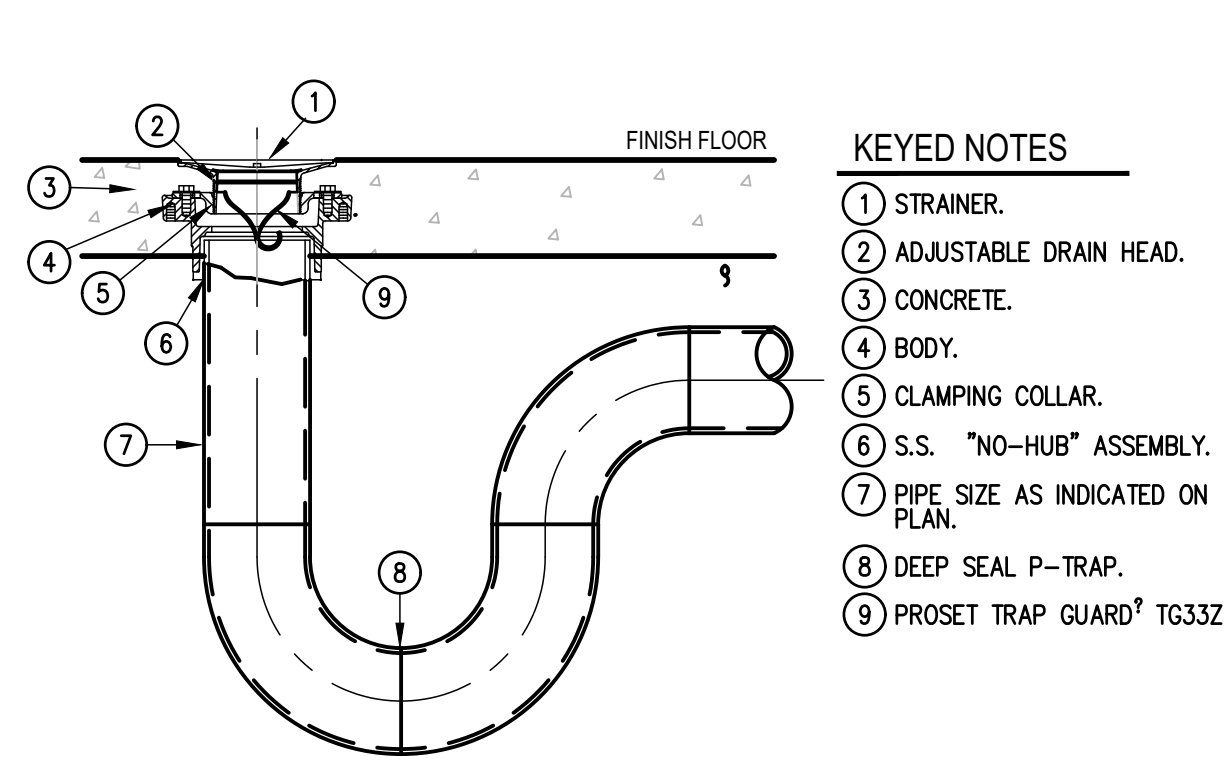
ISSUE DATE: JUNE 15, 2022

PROJECT NO	2130
ISSUE DATE	08/18/2022

SHEET NUMBER  
**P4.10**

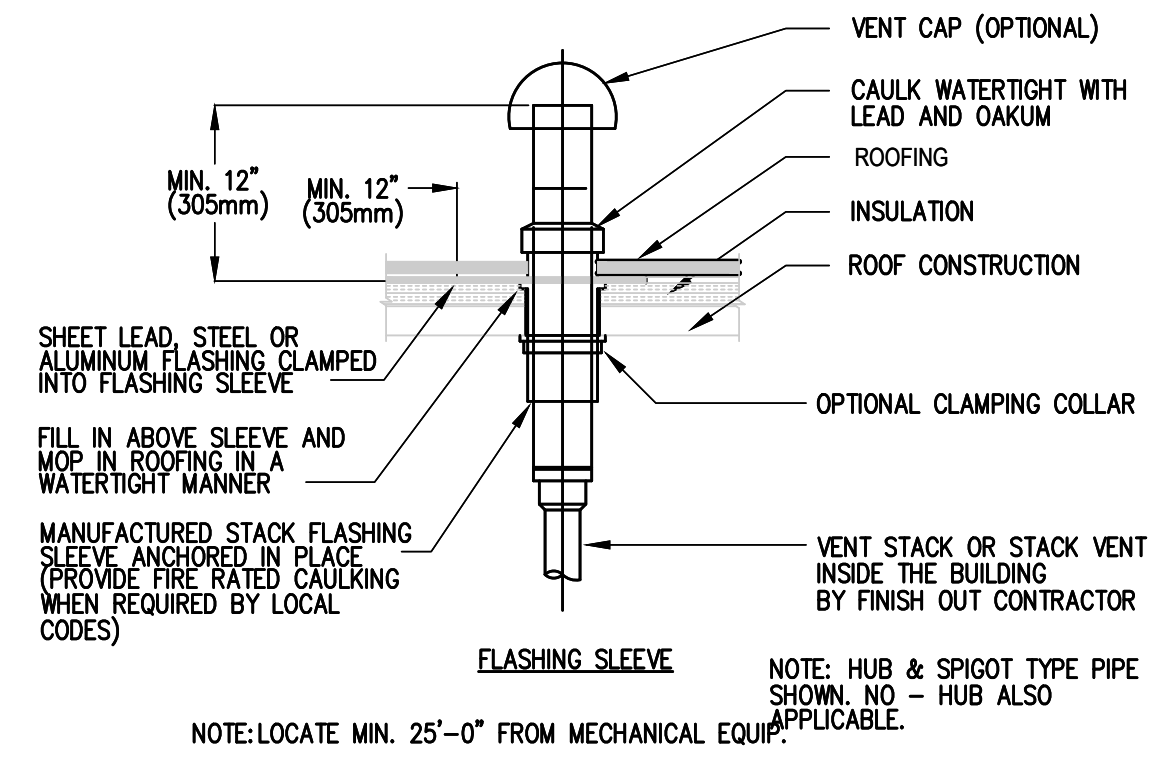


1128 S. COMMERCE ST.  
HARLINGEN, TX  
PHONE: 361-230-3435  
TEXAS REGISTERED  
ENGINEERING FIRM  
E-15589

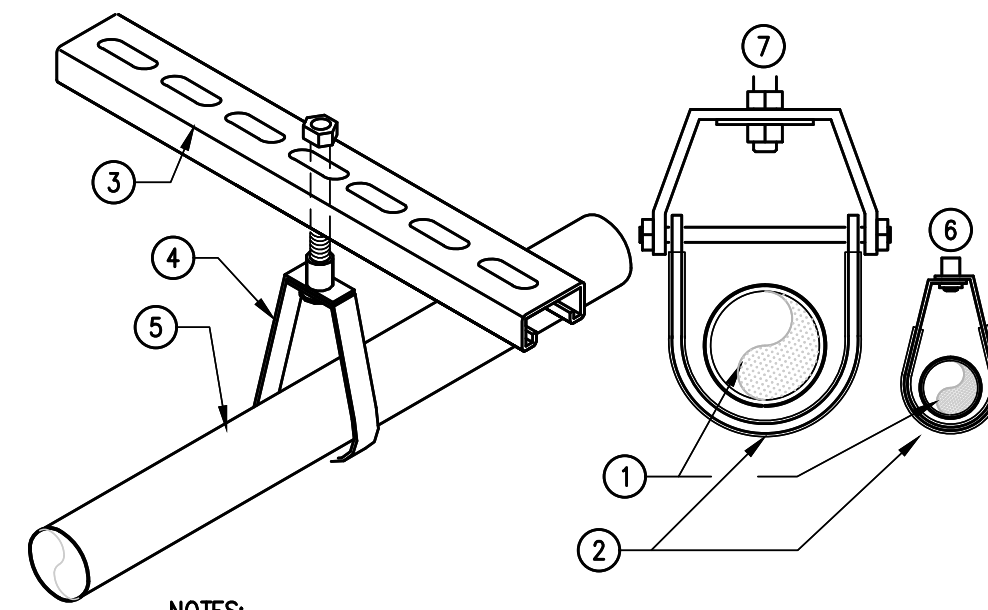


- KEYED NOTES**
- 1 STRAINER.
  - 2 ADJUSTABLE DRAIN HEAD.
  - 3 CONCRETE.
  - 4 BODY.
  - 5 CLAMPING COLLAR.
  - 6 S.S. "NO-HUB" ASSEMBLY.
  - 7 PIPE SIZE AS INDICATED ON PLAN.
  - 8 DEEP SEAL P-TRAP.
  - 9 PROSET TRAP GUARD<sup>®</sup> TC33Z

**01** FD-1 FLOOR DRAIN WITH TRAP GUARD DETAIL  
SCALE : NOT TO SCALE

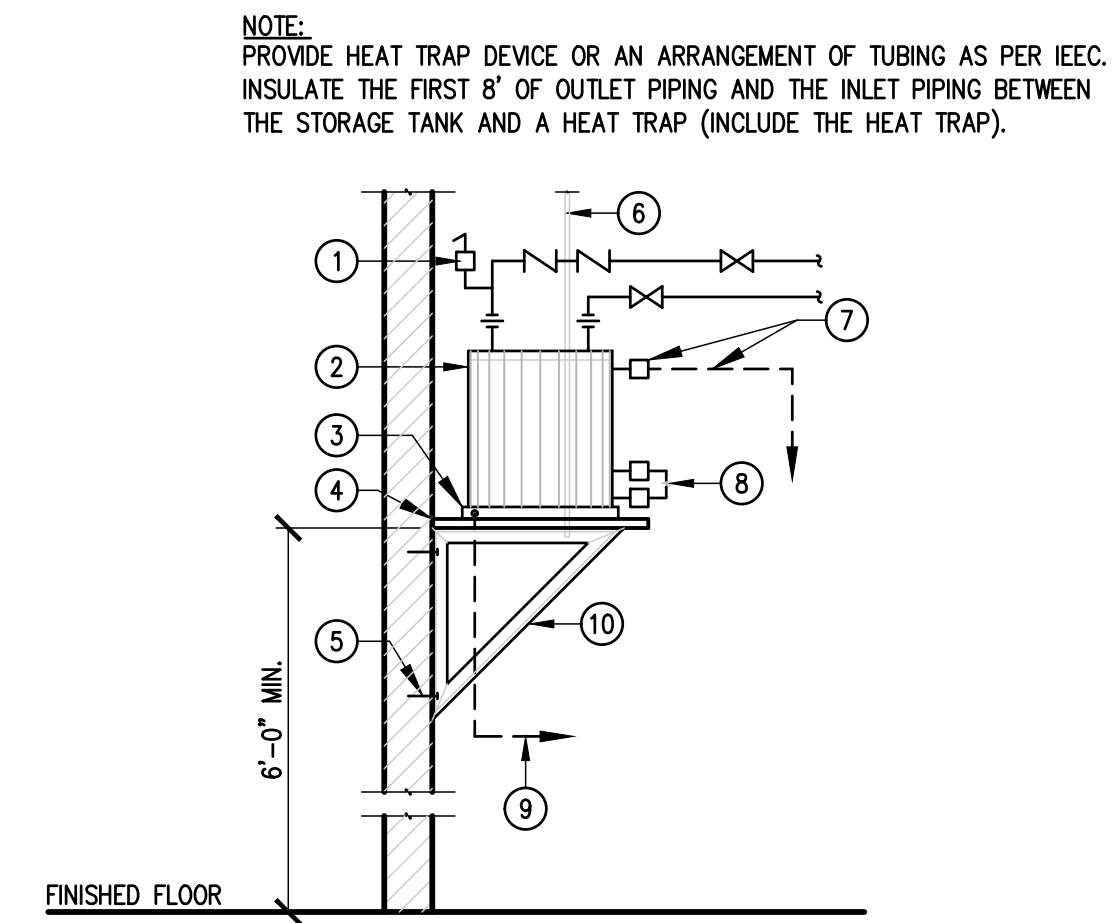


**02** VENT THRU ROOF DETAIL  
SCALE : NOT TO SCALE



- KEYED NOTES**
- 1 SCHEDULED PIPE.
  - 2 PLASTIC COATING.
  - 3 UNI-STRUT.
  - 4 PIPE HANGER.
  - 5 DOMESTIC WATER LINE, COPPER DRAIN LINE FROM AHU'S.
  - 6 BAND HANGER.
  - 7 CLEVIS HANGER.

**03** DOMESTIC WATER LINE PIPING SUPPORT DETAIL  
SCALE : NOT TO SCALE



- KEYED NOTES**
- 1 POP-OFF VALVE/ANTI-SIPHON DEVICE.
  - 2 ELECTRIC WATER HEATER AS SCHEDULED.
  - 3 PAN WITH DRAIN.
  - 4 3/4" MIN. MOISTURE RESISTANT PLYWD.
  - 5 SECURE TO WALL AS REQUIRED.
  - 6 (2) 3/8" Ø RODS, SECURE TO STRUCTURE.
  - 7 RELIEF VALVE WITH 3/4" MIN. COPPER DRAIN LINE.
  - 8 HEATING ELEMENT AS SPEC'D.
  - 9 COPPER DRAIN LINE TO MOP SINK.
  - 10 (2) KNEE BRACES, L 1.25X1.25X.25 GALV., @ 8" O.C. WITH WELDED JOINTS.

**04** WALL MOUNT ELECTRIC WATER HEATER  
SCALE : NOT TO SCALE



**05** WC-1  
SCALE : NOT TO SCALE



**06** L-1  
SCALE : NOT TO SCALE



**07** SK-1  
SCALE : NOT TO SCALE



**08** MSB-1  
SCALE : NOT TO SCALE



**09** EWH-1  
SCALE : NOT TO SCALE



**10** EDF-1  
SCALE : NOT TO SCALE



**11** WH-1  
SCALE : NOT TO SCALE



**12** FD-1  
SCALE : NOT TO SCALE



**13** IMB  
SCALE : NOT TO SCALE



**14** IEWH-1  
SCALE : NOT TO SCALE



1128 S. COMMERCE ST.  
HARLINGEN, TX  
PHONE: 361-230-3435  
TEXAS REGISTERED  
ENGINEERING FIRM  
F-15589

THESE DRAWINGS AND SPECIFICATIONS ARE AND SHALL REMAIN THE PROPERTY OF THE ARCHITECT. THEY MAY NOT BE REPRODUCED, COPIED, OR ALTERED IN ANY WAY WITHOUT PRIOR WRITTEN APPROVAL FROM AND WITH APPROPRIATE COMPENSATION TO THE ARCHITECT.

**K+ architect**  
61 BETHPAGE DR  
LAGUNA VISTA, TX 78566  
Phone: (956) 434-9535

**Boultinghouse  
Simmons  
Gates  
ARCHITECT**  
3301 N McCOLL RD | MCALLEN, TX 78901 | P 956.630.9484 | F 956.630.2058



06.15.2022

**PLUMBING SCHEDULES AND DETAILS**  
PROJECT NAME: CAMERON COUNTY TAX ASSESSOR OFFICE  
OWNER: CAMERON COUNTY  
PROJECT ADDRESS: BROWNSVILLE, TEXAS

ISSUE DATE: JUNE 15, 2022

PROJECT NO: 2130  
ISSUING ENGINEER: [Signature]  
DATE: 08/18/2022

SHEET NUMBER: **P4.20**

### Features

- Oval basin with unglazed underside.
- Overflow drain.
- Fits standard 14" x 17" (356 x 432 mm) countertop cutout.

### Material

- Vitreous china.

### Installation

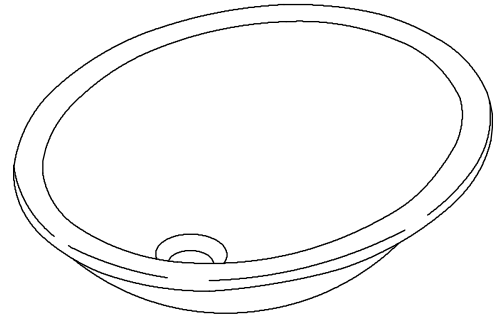
- Undermount.

### Recommended Products/Accessories

K-8998 P-Trap  
K-23726 Drain treatment  
K-23725 Cast iron cleaner

### Included Components

Additional Components:  
1193643



ADA

CSA B651

### Codes/Standards











ASME A112.19.2/CSA B45.1  
ADA  
ICC/ANSI A117.1  
CSA B651

### KOHLER® One-Year Limited Warranty

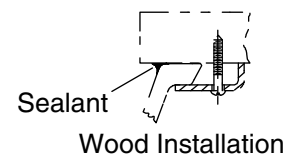
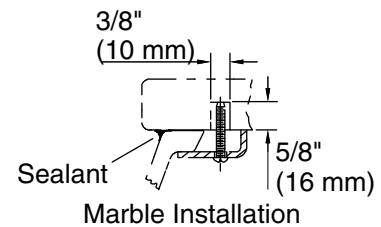
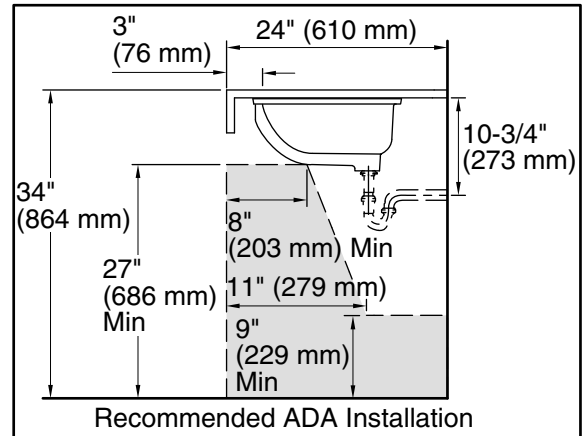
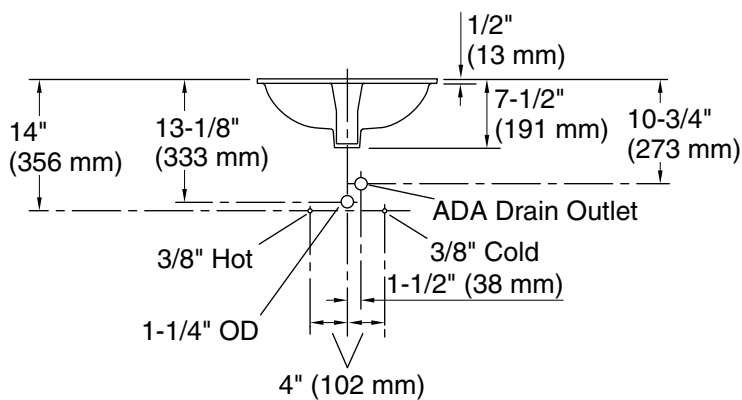
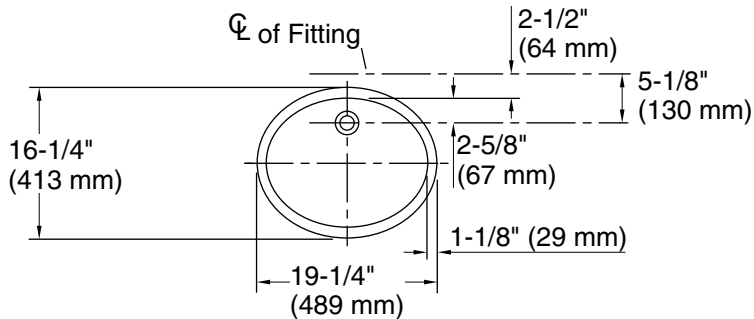
See website for detailed warranty information.

### Available Colors/Finishes

*Color tiles intended for reference only.*

Color	Code	Description
	0	White
	HW1	Honed White
	96	Biscuit
	47	Almond
	NY	Dune
	95	Ice™ Grey
	33	Mexican Sand™
	K4	Cashmere
	58	Thunder™ Grey
	7	Black Black™





### Technical Information

All product dimensions are nominal.

Installation:	Undermount
Bowl area:	Length: 17" (432 mm) Width: 14" (356 mm) With overflow: Yes Water depth: 4" (102 mm)
With overflow:	Yes
Drain hole:	1-3/4" (44 mm)
Template:	1151011-7, required, not included

### Notes

Install this product according to the installation instructions.

**NOTICE:** Countertop manufacturer or cutter must use the current product template available at [www.kohler.com](http://www.kohler.com), or by calling 1-800-4KOHLER. Kohler Co. is not responsible for cutout errors when the incorrect cutout template is used.

ADA, CSA B651 compliant when installed to the specific requirements of these regulations.