

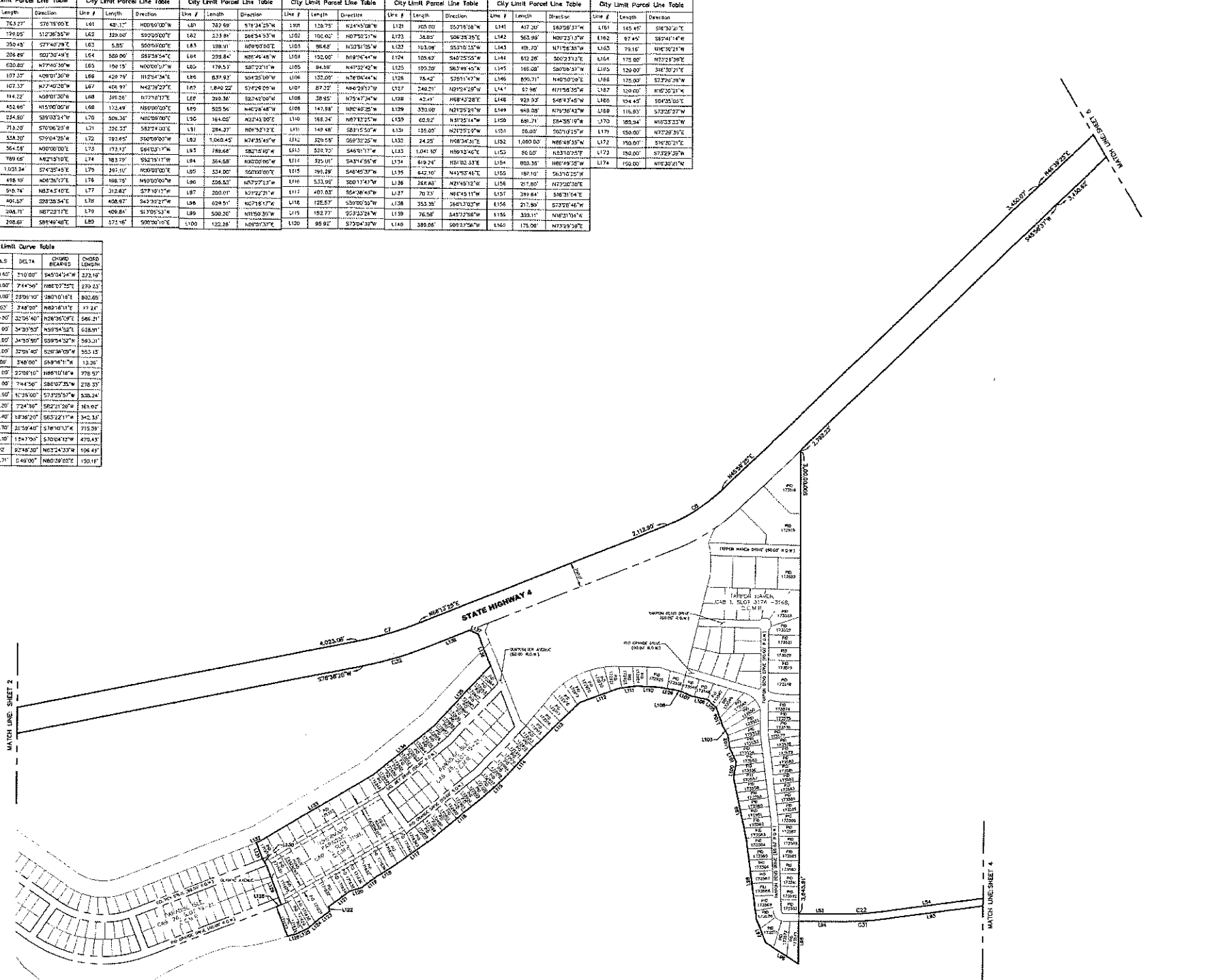
CITY OF STARBASE, TEXAS

INCORPORATION PETITION FOR THE CITY OF STARBASE, TEXAS – A TYPE-C MUNICIPAL CORPORATION

- IV. Additional Sealed Map(s) of Proposed
Municipal Boundaries Detailing Specific
Areas of the City [5 pgs.]**

City Limit Parcel Line Table			City Limit Parcel Line Table			City Limit Parcel Line Table			City Limit Parcel Line Table			City Limit Parcel Line Table			City Limit Parcel Line Table			City Limit Parcel Line Table			City Limit Parcel Line Table			City Limit Parcel Line Table														
Line #	Length	Bearing	Line #	Length	Bearing	Line #	Length	Bearing	Line #	Length	Bearing	Line #	Length	Bearing	Line #	Length	Bearing	Line #	Length	Bearing	Line #	Length	Bearing	Line #	Length	Bearing	Line #	Length	Bearing									
L1	103.37	S66°49'25"E	L21	353.02	N05°52'47"E	L41	763.27	S76°15'00"E	L61	421.17	N00°00'00"W	L81	303.89	S79°24'25"W	L101	126.75	S24°45'08"W	L121	203.00	S27°18'08"W	L141	417.20	S07°28'27"W	L161	143.40	S18°22'21"E	L181	143.40	S18°22'21"E	L201	97.44	S07°41'47"W	L221	97.44	S07°41'47"W	L241	210.77	N04°52'21"E

City Limit Curve Table			City Limit Curve Table		
Curve	ARC LENGTH	RADIUS	Curve	ARC LENGTH	RADIUS
C1	447.57	1,850.10	C11	322.33	5,428.60
C2	716.17	1,452.30	C12	275.44	3,810.00



LEGEND

CLERA - CHADLER COUNTY MAP RECORDS
 CLER - CRAWFORD COUNTY MAP RECORDS
 PLRLC - PRICE RECORDS OF HALLS COUNTY
 R.M.N. - RIGHT OF WAY

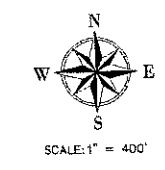
- SURVEY NOTES:**
1. BASIS OF BEARING THE SOUTH RIGHT OF WAY LINE OF BOCA CHICA HIGHWAY 4, AS FOR THE DEED THEREOF RECORDED IN VOLUME 211, PAGE 24, DEED RECORDS OF CRAWFORD COUNTY, TEXAS
 2. ALL COORDINATES, BEARINGS, AND DISTANCES ARE BASED ON THE TEXAS INTEGRATED SYSTEM (TIGAS) B.M. TEXAS STATE PLANE, SOUTH ZONE, US SURVEY FEET (SFD)
 3. ALL BOUNDARIES ARE BASED ON RECORDED DOCUMENTS

PROPOSED CITY LIMITS OF STARBASE, TX

12/9/24

SAMES

300 S. 10TH ST. SUITE 1500 TEL: (956) 702-8880
 McALLEN, TEXAS 78501 FAX: (956) 702-8880
 TEL. REG. SURVEYING FIRM NO. 101418-00
 [McALLEN, TX | DALLAS, TX | BAYTOWN, TX | HOUSTON, TX | LUBBOCK, TX | MIDLAND, TX]
 SHEET 3 OF 8



City Limit Parcel Line Table		City Limit Parcel Line Table		City Limit Parcel Line Table	
Line #	Length	Direction	Line #	Length	Direction
L1	803.37	S86°49'35"E	L21	276.02	S02°32'41"E
L2	50.00	N03°16'25"W	L22	80.00	S54°07'28"E
L3	50.00	S07°16'25"W	L23	120.00	N00°32'41"E
L4	128.24	N14°29'11"W	L24	172.22	N84°09'13"W
L5	128.24	N14°29'11"W	L25	260.00	N40°27'30"E
L6	229.50	N72°30'49"E	L26	41.00	S49°22'37"E
L7	55.04	N15°23'48"E	L27	60.00	S27°25'25"E
L8	463.47	S14°28'11"E	L28	272.87	S23°20'28"E
L9	216.62	S71°56'25"E	L29	713.30	N70°06'25"E
L10	52.00	N18°03'22"E	L30	848.40	N67°50'25"E
L11	606.90	S71°56'25"E	L31	580.00	N57°46'26"E
L12	90.00	S08°50'25"E	L32	209.19	N12°00'02"E
L13	700.00	S71°56'25"E	L33	108.50	S02°54'01"E
L14	50.00	N18°03'22"E	L34	332.40	S77°40'30"E
L15	139.84	S71°56'25"E	L35	235.12	S77°40'30"E
L16	255.67	S02°14'40"W	L36	744.03	S77°40'30"E
L17	612.23	N14°43'30"E	L37	265.92	N44°52'29"W
L18	63.02	N18°22'25"E	L38	351.14	S40°12'31"E
L19	164.00	N04°10'15"W	L39	308.00	S46°07'00"E
L20	44.00	N04°10'15"W	L40	278.60	S46°07'00"E



City Limit Parcel Line Table		City Limit Parcel Line Table		City Limit Parcel Line Table	
Line #	Length	Direction	Line #	Length	Direction
L41	481.17	N02°01'00"W	L51	760.39	S76°44'25"W
L42	426.00	S40°00'00"E	L52	233.91	S06°54'53"W
L43	2.83	S08°00'00"E	L53	168.91	N00°00'00"E
L44	540.00	S49°59'54"E	L54	296.84	N68°43'48"W
L45	100.10	N00°00'00"W	L55	178.57	S47°27'11"W
L46	450.79	N17°34'34"E	L56	832.22	S24°28'00"W
L47	468.37	N41°39'27"E	L57	1840.22	S74°28'00"W
L48	348.98	N77°10'17"E	L58	210.26	S27°42'00"W
L49	173.44	N69°00'00"E	L59	525.26	N40°29'46"W
L50	509.26	N07°50'00"E	L60	161.00	S27°42'00"E
L51	320.33	S87°14'16"E	L61	294.37	N02°51'07"E
L52	793.00	S09°00'00"W	L62	1,050.42	N74°35'45"W
L53	172.12	S64°23'17"E	L63	765.66	S87°15'10"W
L54	182.78	S51°17'17"E	L64	364.58	N00°00'00"W
L55	487.10	N09°00'00"E	L65	334.00	S05°00'00"E
L56	194.72	N49°00'00"W	L66	305.32	S57°27'27"E
L57	312.82	S77°11'17"E	L67	200.01	N07°22'21"W
L58	406.97	S42°39'27"E	L68	622.51	N07°18'17"W
L59	408.84	S17°04'22"E	L69	500.20	N17°30'20"W
L60	573.19	S08°10'10"E	L70	922.28	N03°31'27"E

City Limit Curve Table				City Limit Curve Table			
CHORD LENGTH	RADIUS	DELTA	CHORD BEARING	CHORD LENGTH	RADIUS	DELTA	CHORD BEARING
C1	447.51	1,240.10	134°07'00"	446.43	C21	329.33	5,819.03
C2	776.17	1,482.10	139°30'00"	478.10	C22	270.43	2,000.00
C3	308.79	935.40	149°30'00"	403.22	C23	608.44	2,000.00
C4	78.40	50.00	160°30'00"	461.32	C24	17.00	200.00
C5	701.14	1,160.00	153°14'34"E	491.10	C25	594.40	1,000.00
C6	536.98	1,046.10	157°24'20"	581.28	C26	638.62	1,000.00
C7	502.62	2,784.00	162°30'00"	622.53	C27	602.16	1,000.00
C8	517.04	1,232.70	173°14'40"	657.96	C28	560.43	1,000.00
C9	607.84	1,260.00	177°14'40"	655.24	C29	589.42	1,000.00
C10	154.53	5,819.03	173°00"	667.77	C30	783.88	1,446.00
C11	208.01	5,639.60	207°00"	667.77	C31	278.15	2,040.00
C12	240.35	1,332.70	182°30'00"	662.54	C32	181.43	1,246.10
C13	700.12	1,260.00	191°40'00"	677.29	C33	244.01	1,005.40
C14	150.79	1,460.95	63°08'30"	680.74	C34	223.83	1,262.70
C15	27.47	1,460.95	154°40'	677.29	C35	471.17	1,000.00
C16	108.69	4,838.72	194°40'	677.29	C36	119.38	72.97
C17	1,076.77	1,076.77	194°40'	677.29	C37	119.38	72.97
C18	311.24	3,764.15	270°00"	677.29	C38	168.23	1,419.17
C19	248.70	1,523.10	87°17'30"	677.29	C39	168.23	1,419.17

LEGEND

- CCMR - CAMERON COUNTY MAP RECORDS
- CCWR - CAMERON COUNTY DEED RECORDS
- BLR/C - OFFICIAL RECORDS OF CAMERON COUNTY, TEXAS
- B.O.W. - BOUNDARY

SURVEY NOTES:
 1. BASIS OF BEARING: THE SOUTH RIGHT OF WAY LINE OF ROAD OR HIGHWAY 4, AS PER THE DEED THEREOF RECORDED IN VOLUME 211, PAGE 54, DEED RECORDS OF CAMERON COUNTY, TEXAS.
 2. ALL COORDINATES, BEARINGS, AND DISTANCES, ARE BASED ON THE TEXAS COORDINATE SYSTEM (TMD 83), TEXAS STATE PLANE, SOUTH ZONE, US SURVEY FEET, GRID.
 3. ALL BOUNDARIES ARE BASED ON RECORDED DOCUMENTS.

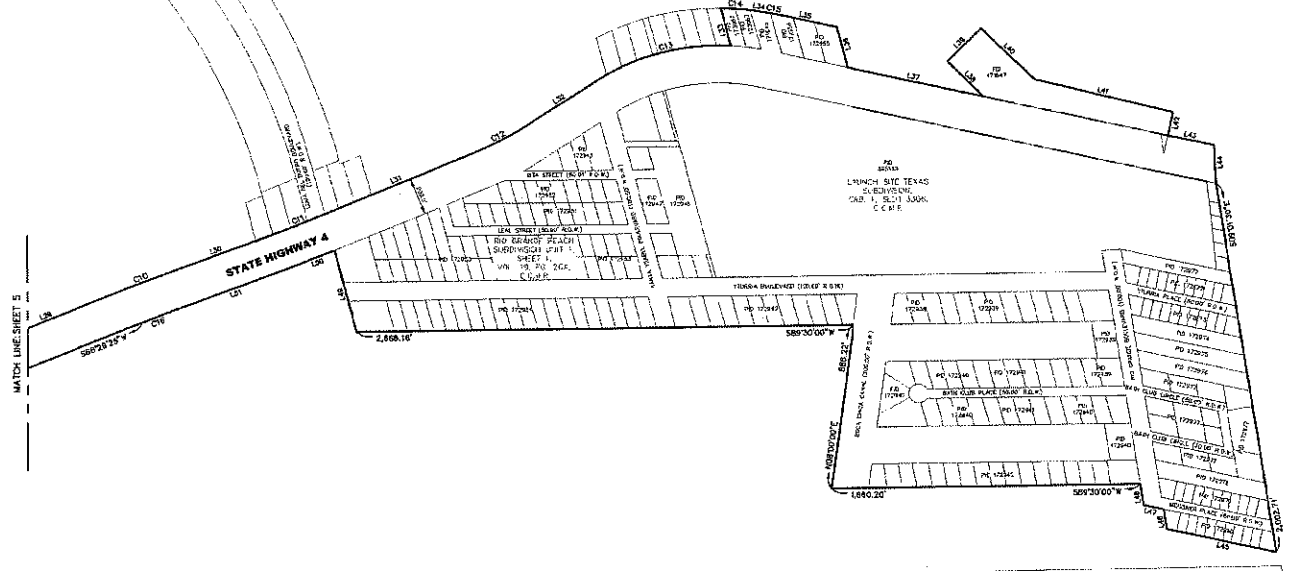
PROPOSED CITY LIMITS OF STARBASE, TX

SAMES SURVEYING, INC.
 200 S. 10TH ST, SUITE 1500 TEL: (956) 702-8880
 McALLEN, TEXAS 78501 FAX: (956) 702-8880
 TEL. REG. SURVEYING FIRM NO. 101416-02



City Limit Parcel Line Table			City Limit Parcel Line Table			City Limit Parcel Line Table			City Limit Parcel Line Table			City Limit Parcel Line Table			City Limit Parcel Line Table			City Limit Parcel Line Table								
Line #	Length	Direction	Line #	Length	Direction	Line #	Length	Direction	Line #	Length	Direction	Line #	Length	Direction	Line #	Length	Direction	Line #	Length	Direction						
L1	500.00	N 89° 43' 35" E	L2	250.00	N 02° 24' 11" E	L41	343.22	S 75° 15' 00" E	L61	491.00	N 00° 00' 00" W	L81	762.69	S 24° 34' 20" W	L101	120.75	N 24° 45' 18" W	L121	525.92	S 23° 16' 34" W	L141	417.30	S 66° 06' 33" W	L161	143.45	S 12° 02' 11" E

City Limit Curve Table				City Limit Curve Table				City Limit Curve Table				City Limit Curve Table				City Limit Curve Table							
LINE	ARC LENGTH	BEGINNING STATION	ENDING STATION	ARC LENGTH	BEGINNING STATION	ENDING STATION	CURVE DATA	LINE	ARC LENGTH	BEGINNING STATION	ENDING STATION	ARC LENGTH	BEGINNING STATION	ENDING STATION	CURVE DATA	LINE	ARC LENGTH	BEGINNING STATION	ENDING STATION	ARC LENGTH	BEGINNING STATION	ENDING STATION	CURVE DATA
C1	1,647.31	1,888.17	1,347,000	N 70° 34' 12" E	445.43	C21	352.32	S 62° 50' 00" W	20,000'	545,054.24" W	222.19												



LEGEND	
C.C.M.S.	CAMERON COUNTY MAP RECORDS
C.C.D.R.	CAMERON COUNTY DEED RECORDS
D.R.C.	DEED RECORDS OF BEAULAC COUNTY, LA
B.E.M.	BOOK OF MAPS

SURVEY NOTES:
1. BASIS OF BEARING: THE SOUTH FRONT OF MAIN LINE LINE OF BOCCA CIRCA HIGHWAY 4 AS PER THE FIELD THEODOLITE RECORDS IN VOLUME 211, PAGE 54, DEED RECORDS OF CAMERON COUNTY, TEXAS.
2. ALL COORDINATES, BEARINGS AND DISTANCES ARE BASED ON THE TEXAS COORDINATE SYSTEM (T88D 82). TEXAS STATE PLANES, SOUTH ZONE, U.S. SURVEY FEET, DSD.
3. ALL BOUNDARIES ARE BASED ON RECORDS ON EXHIBITS.

PROPOSED CITY LIMITS OF STARBASE, TX

SAMES SURVEYING	
200 S. 10TH ST. SUITE 1500 MCALLEN, TEXAS 76801 TEL. REG. SURVEYING	
TEL: (956) 702-8880 FAX: (956) 702-8880 FIRM No. 101415-00	
SHEET 24 OF 24	