



CAMERON COUNTY PURCHASING

1100 East Monroe St,
Brownsville, Texas 78520
(956) 544-0871 Fax: (956) 550-7219

ADDENDUM # 2 - PAGE 1 of 11

DATE OUT: 05/16/2025

RFP TITLE: CAMERON COUNTY BEACH ACCESS No.3 IMPROVEMENTS PHASE II

RFP NUMBER # 250501

DEADLINE: MAY 28, 2025 at 3:00 p.m.

(IN ORDER TO AVOID DISQUALIFICATION – ALL ADDENDUMS MUST BE SIGNED AND RETURNED BY DEADLINE AND INCLUDED IN THE SEALED BID PACKAGE SUBMITTED)

1.- Additional information (DRAWINGS) from Project Architect GMS:

See attached ten (10) DRAWING pages

Note:

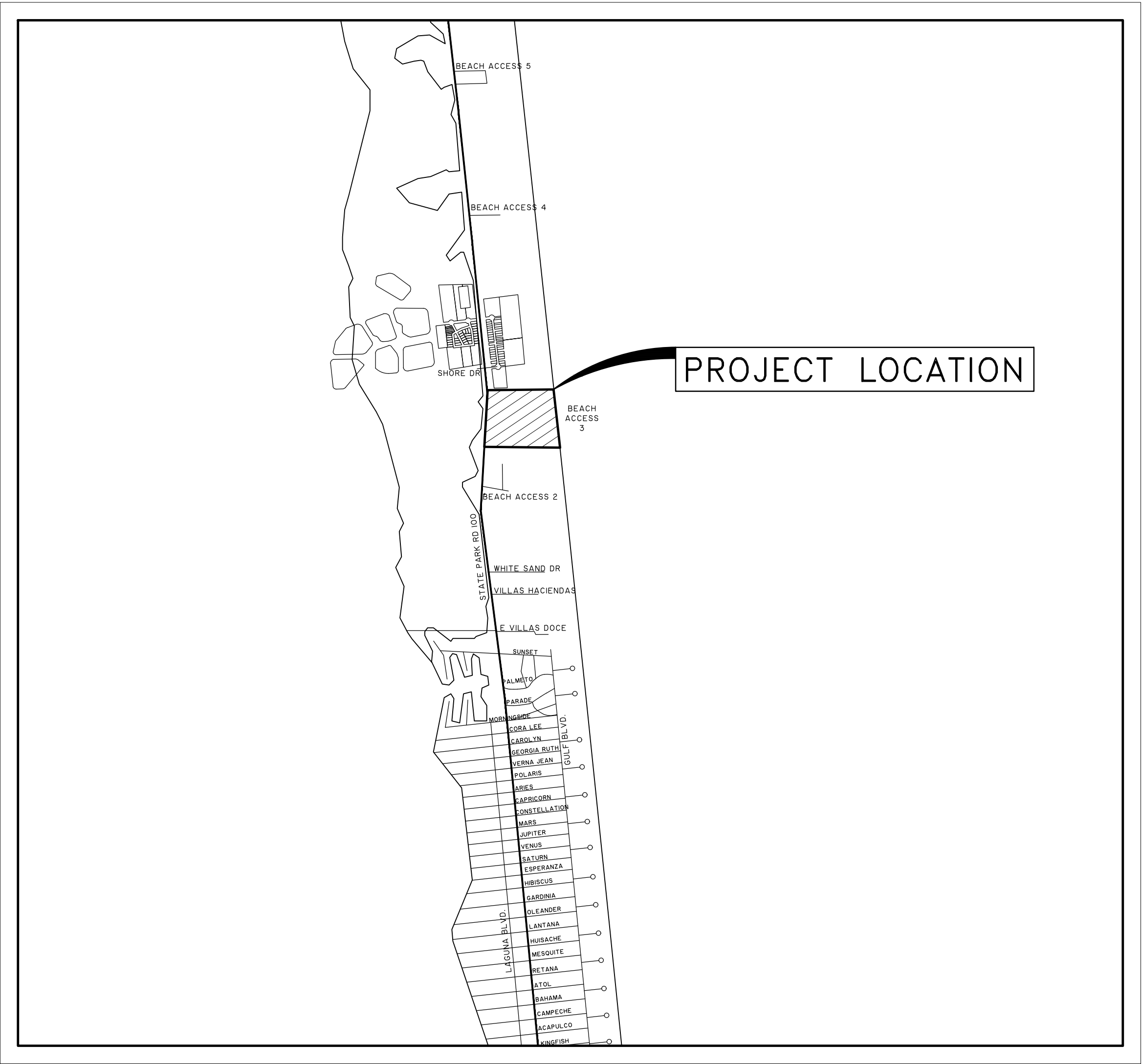
This addendum is issued for the purpose of answering request for clarifications submitted by participants. This addendum shall become part of the RFP and all RESPONDERS/PARTICIPANTS shall be bound by its content. All aspects of the scope of work/services not covered herein shall remain the same.

Company Name _____ Phone # _____

Vendor Signature _____ Date _____

Must include and return with RFP package

CONSTRUCTION PLANS
FOR
CAMERON COUNTY
ISLA BLANCA
BEACH ACCESS #3
SOUTH PADRE ISLAND, TEXAS



VICINITY MAP
SCALE: 1"=2000'

MAY 2025

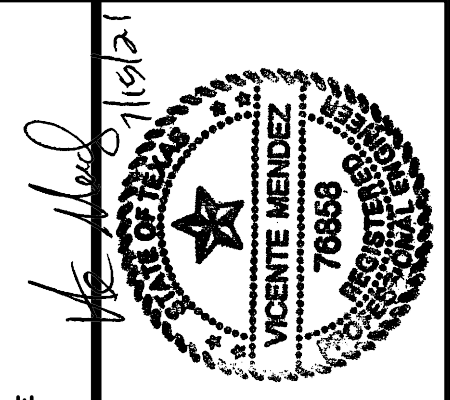
PREPARED BY AMBIOTEC CIVIL ENGINEERING GROUP, INC.



TABLE OF CONTENTS

1	COVER SHEET
2	GENERAL NOTES
3	EXISTING TOPO/DEMO PLAN
4	SWPPP PLAN
5	SWPPP DETAILS
6	UTILITY & DIMENSION PLAN
7	GRADING PLAN
8	PAVING AND DRAINAGE DETAILS
9	WATER DETAILS
10	SANITARY DETAILS

5/15/25 - GRADING & UTILITY PLANS MODIFIED IN REFERENCE
WITH PHASE I & UPDATED LAYOUT FROM GIS



SOUTH PADRE ISLAND
BEACH ACCESS #3
PREPARED FOR: CAMERON COUNTY

COVER SHEET

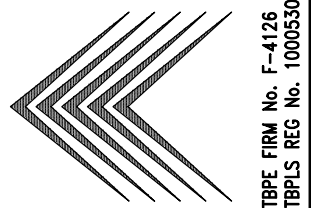
SCALE: N.T.S.	DATE: MAY 2025
DESIGN BY: K. SALDIVAR	
DRAWN BY: J. ROBLES, A. CUEVAS	
CHECKED BY: K. SALDIVAR	
APPROVED BY: V.MENDEZ	
PROJECT NO.: 3581	

SHEET

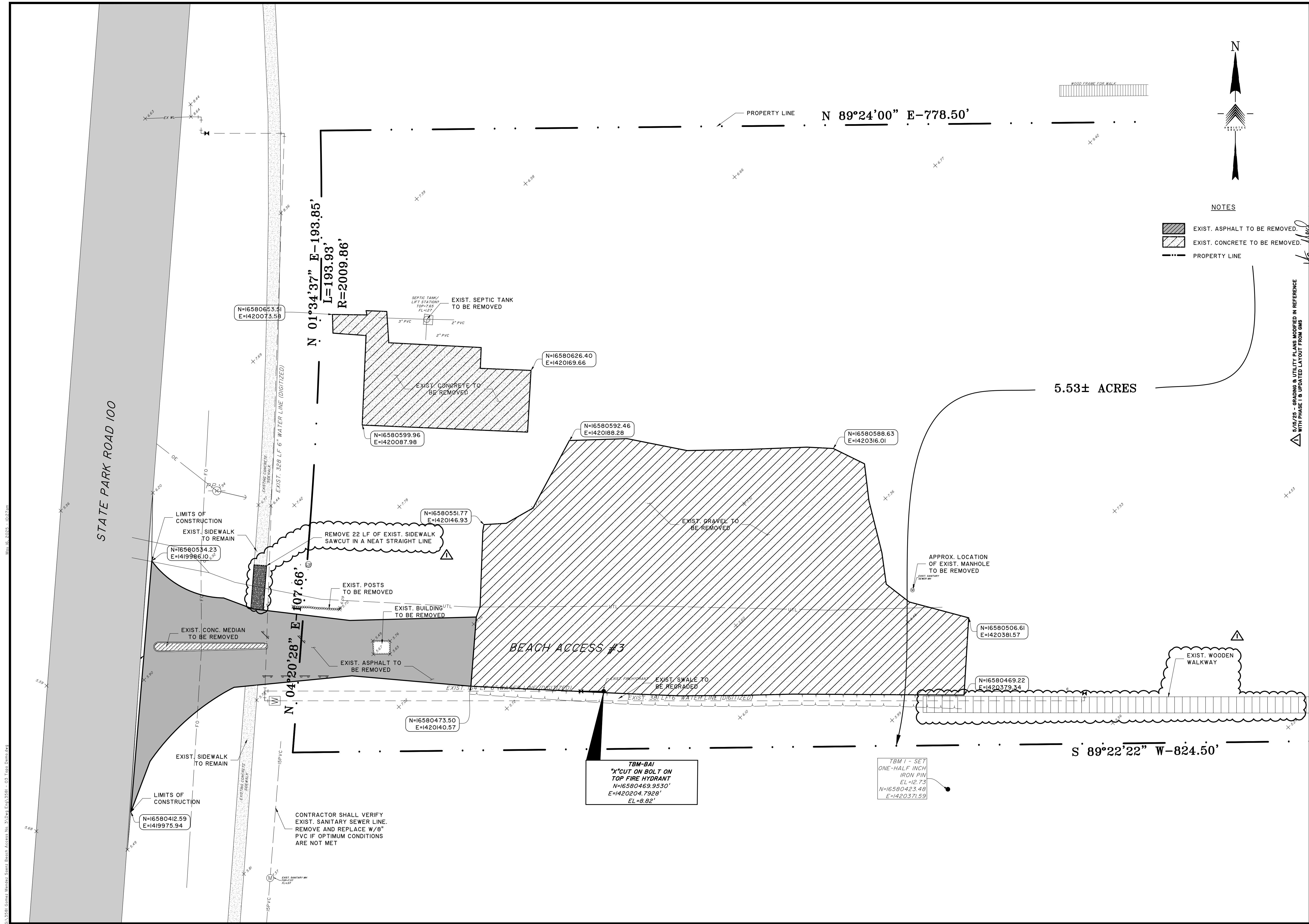
1

OF 10

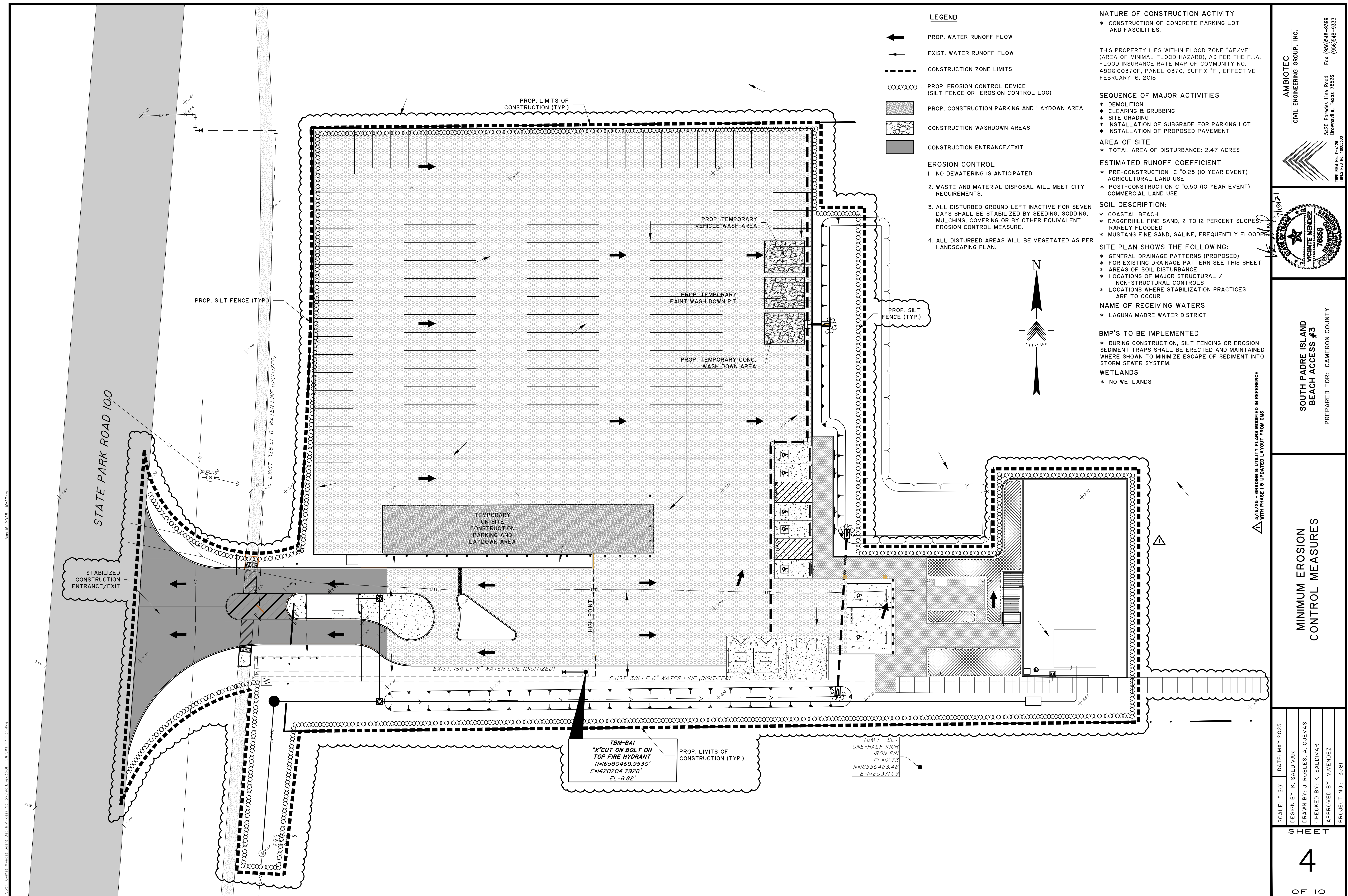
AMBIOTEC
CIVIL ENGINEERING GROUP, INC.



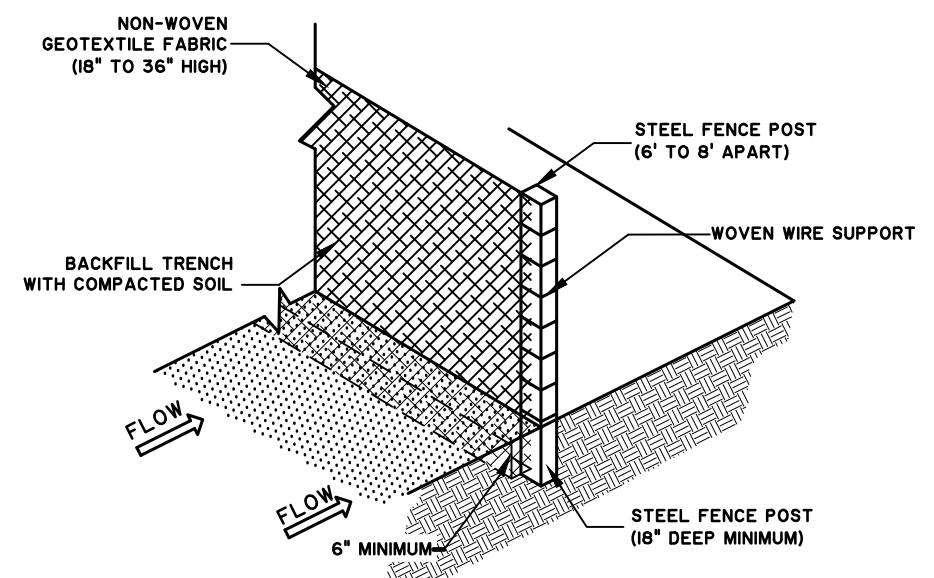
5420 Porceda Line Road
Brownsville, Texas 78526
Fax (361)548-9399
(361)548-9333



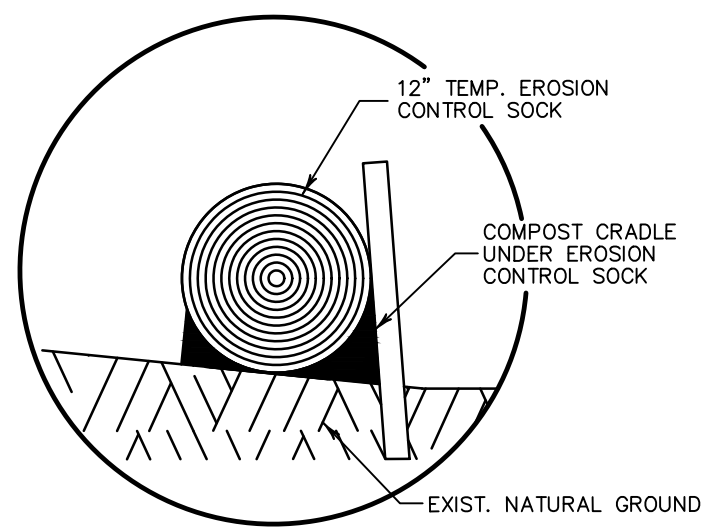
AMBIOTEC CIVIL ENGINEERING GROUP, INC. 5420 Fordeas Line Road Brownsville, Texas 78526 Fax (956) 548-9399 (956) 548-9333	
SOUTH PADRE ISLAND BEACH ACCESS #3 PREPARED FOR: CAMERON COUNTY	
EXISTING TOPO/DEMO	
SCALE: 1"=20'	DATE: MAY 2025
DESIGN BY: K. SALDIVAR	
DRAWN BY: J. ROBLES, A. CUEVAS	
CHECKED BY: K. SALDIVAR	
APPROVED BY: V. MENDEZ	
PROJECT NO.: 3581	
SHEET 3 OF 10	



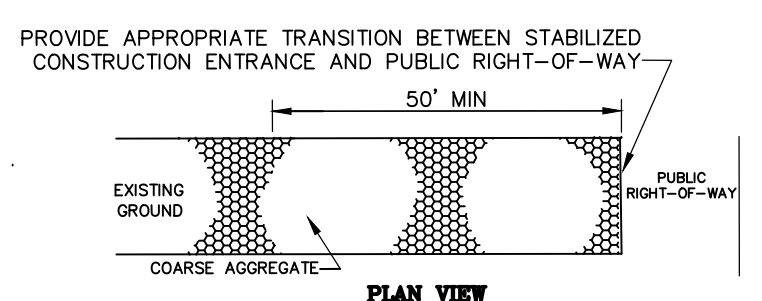
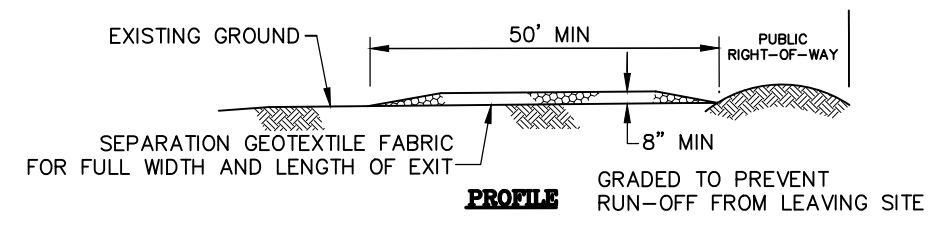
C:\Users\Vicente Mendez\OneDrive\Documents\Projects\SWPPP\SWPPP Details.dwg
VP:Vicente Mendez
DATE: 5/15/25
SCALE: N.T.S.
SHEET: 5 OF 10



SILT FENCE DETAIL



COMPOST CRADLE
NTS

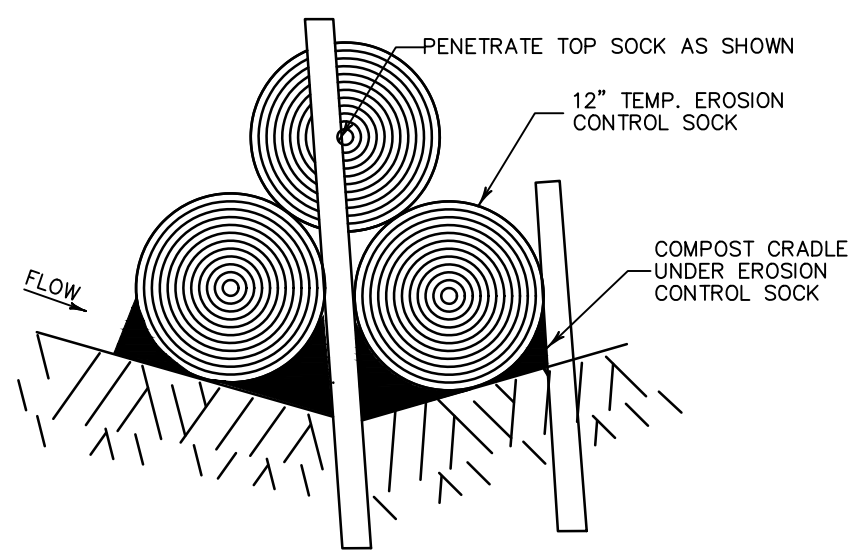


- CONSTRUCTION NOTES:
1. LENGTH SHALL BE AS SHOWN ON THE CONSTRUCTION DRAWINGS, BUT NOT LESS THAN 50 FEET.
 2. THICKNESS SHALL BE NOT LESS THAN 8 INCHES.
 3. WIDTH SHALL BE NOT LESS THAN FULL WIDTH OF ALL POINTS OF INGRESS OR EGRESS.
 4. STABILIZATION FOR OTHER AREAS SHALL HAVE THE SAME AGGREGATE THICKNESS AND WIDTH REQUIREMENTS AS THE STABILIZED CONSTRUCTION EXIT, UNLESS OTHERWISE SHOWN ON THE CONSTRUCTION DRAWINGS.
 5. STABILIZED AREA MAY BE WIDENED OR LENGTHENED TO ACCOMMODATE A TRUCK WASHING AREA. AN OUTLET SEDIMENT TRAP MUST BE PROVIDED FOR THE TRUCK WASHING AREA.
 6. STABILIZED CONSTRUCTION EXIT SHALL BE MAINTAINED FREE OF SEDIMENT FOR THE DURATION OF THE PROJECT.

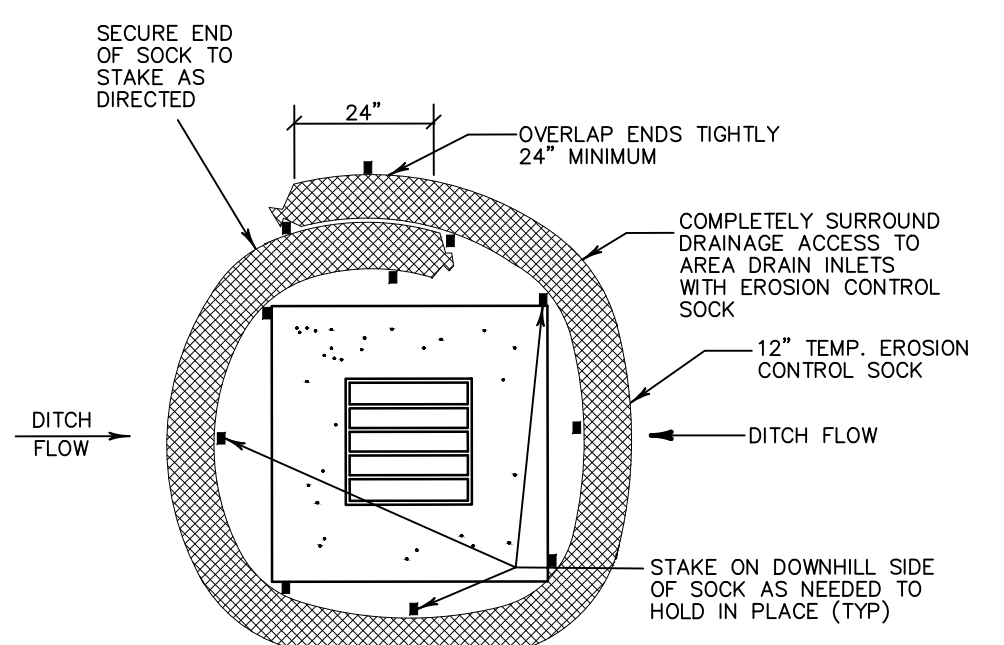
STABILIZED CONSTRUCTION EXIT
NTS

TEMPORARY STABILIZATION

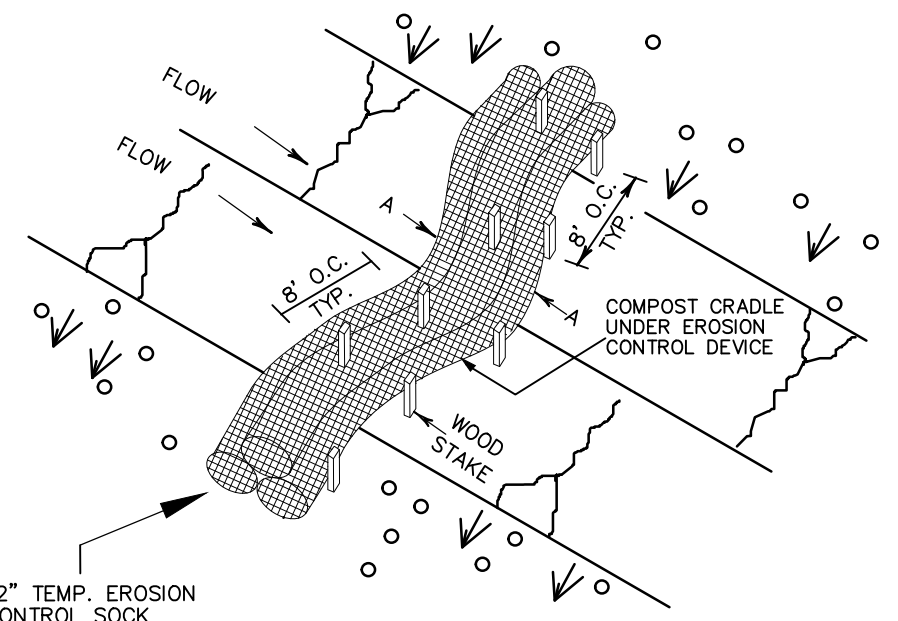
ANY AREA LEFT DISTURBED FOR MORE THAN 21 DAYS SHALL BE TEMPORARILY REVEGETATED WITH SEED AT THE DIRECTION OF THE ENGINEER.



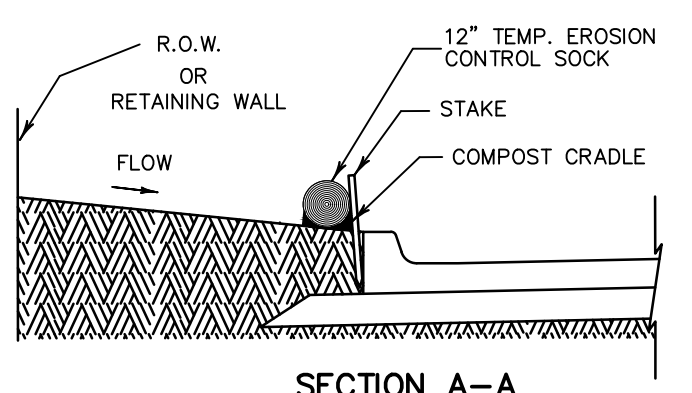
DITCH LINE SEDIMENT TRAP A-A
NTS



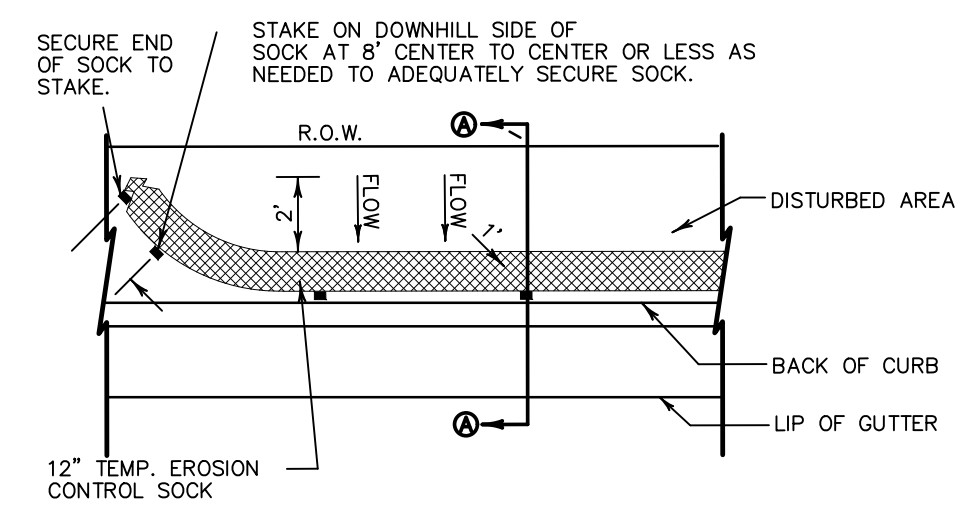
TYPE 'C' INLET SEDIMENT TRAP
NTS



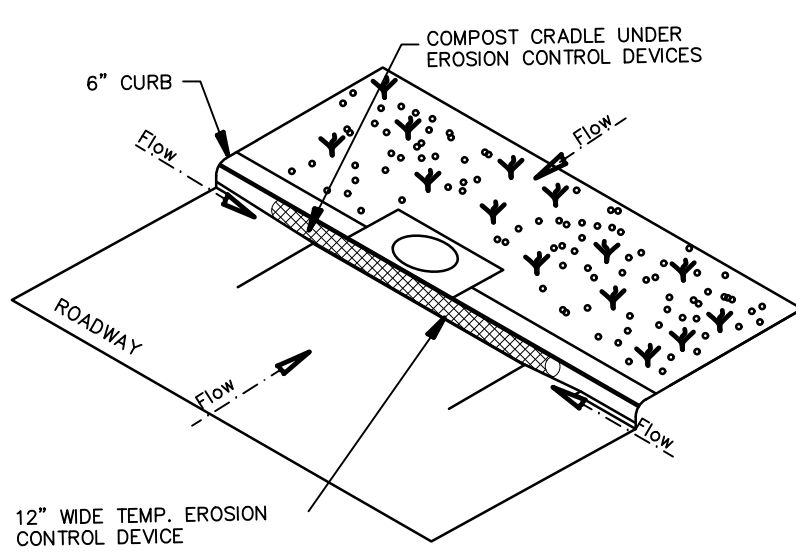
DITCH LINE SEDIMENT TRAP
NTS



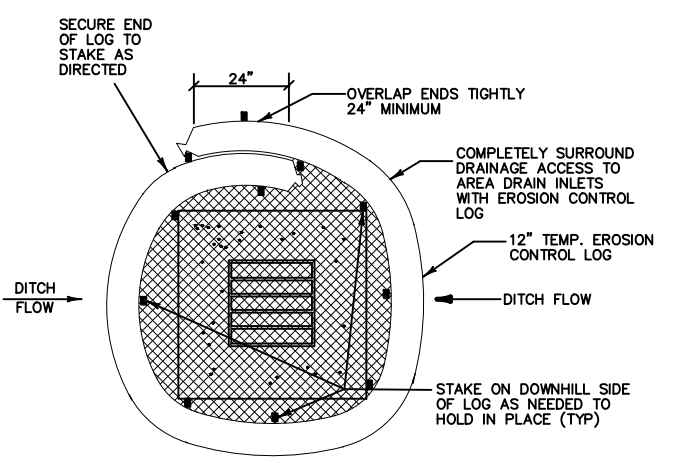
SECTION A-A
BACK OF CURB INLET SEDIMENT TRAP
NTS



PLAN VIEW
NTS



CURB INLET SEDIMENT TRAP
NTS

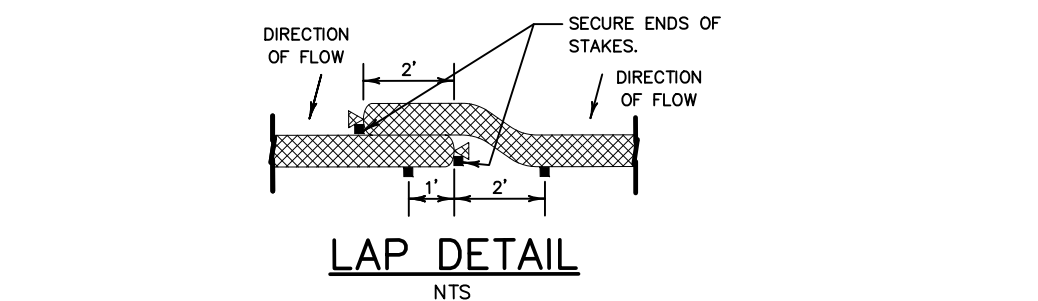
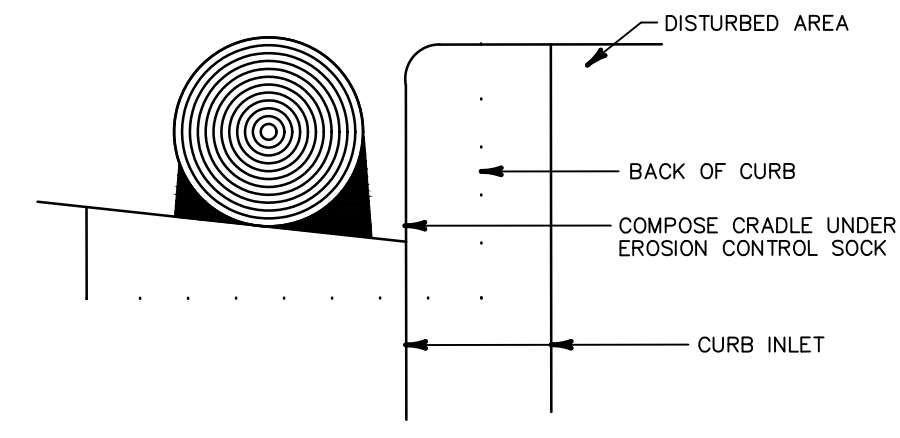


DROP INLET SEDIMENT TRAP

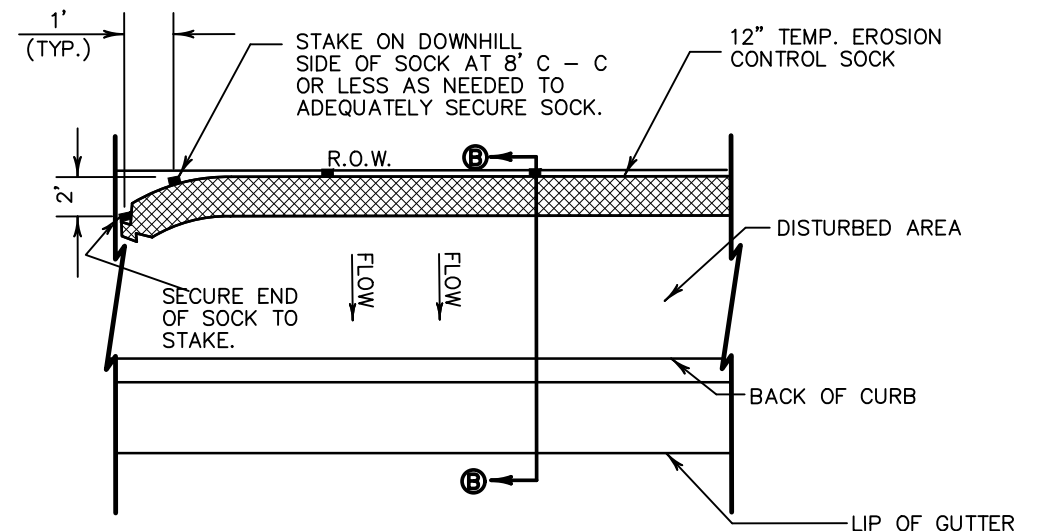
SEDIMENT BASIN & TRAP USAGE GUIDELINES

- A SEDIMENT TRAP MAY BE USED TO PRECIPITATE SEDIMENT OUT OF RUNOFF DRAINING FROM AN UNSTABILIZED AREA.
- TRAPS: THE DRAINAGE AREA FOR A SEDIMENT TRAP SHOULD NOT EXCEED 5 ACRES; THE TRAP CAPACITY SHOULD BE 1800 CF/ACRE (0.5\"/>

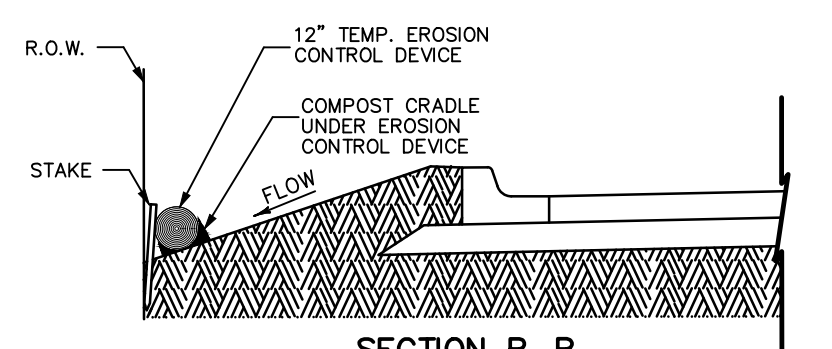
THE TRAP SHOULD BE CLEANED WHEN THE CAPACITY HAS BEEN REDUCED BY 1/2 OR THE SEDIMENT HAS ACCUMULATED TO A DEPTH OF 1', WHICHEVER IS LESS. CLEANING AND REMOVAL OF ACCUMULATED SEDIMENT DEPOSITS IS INCIDENTAL AND WILL NOT BE PAID FOR SEPARATELY.



LAP DETAIL
NTS



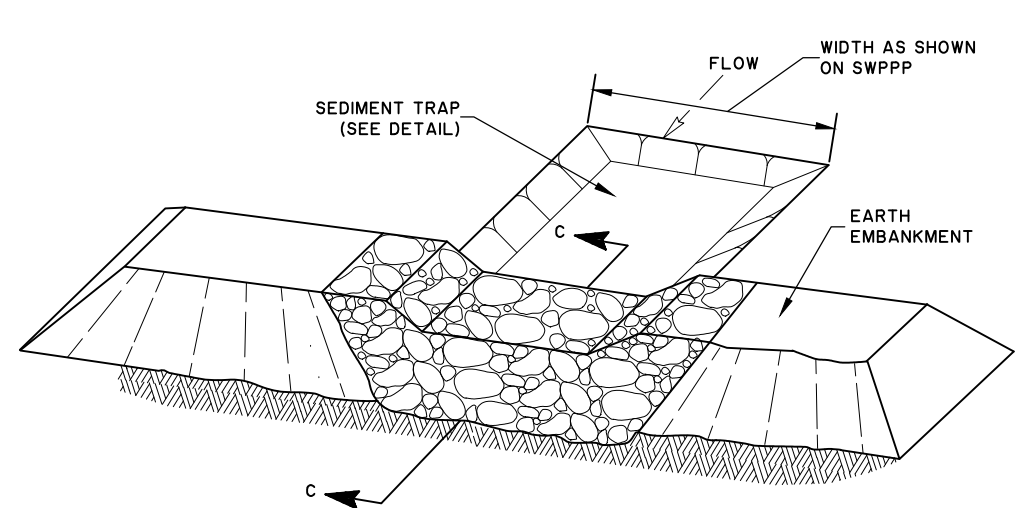
PLAN VIEW
NTS



SECTION B-B
RIGHT-OF-WAY SEDIMENT TRAP
NTS

GENERAL NOTES

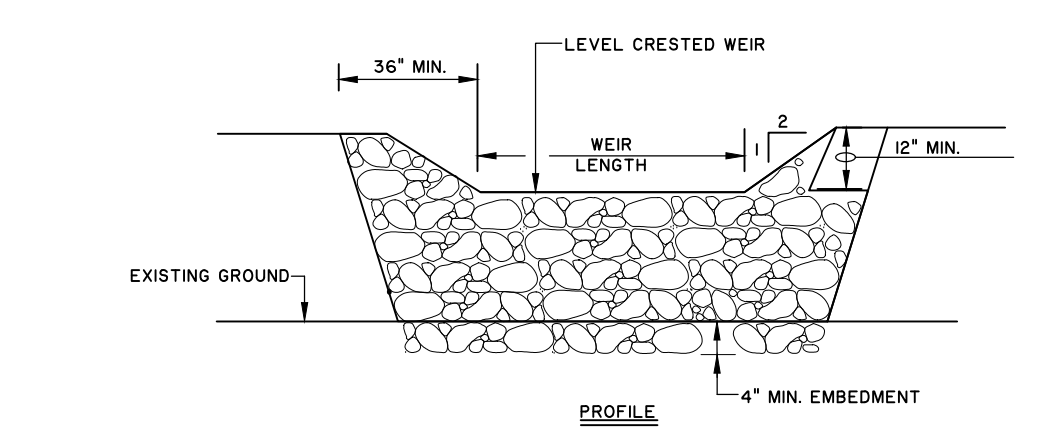
1. LENGTHS OF EROSION CONTROL SOCKS SHALL BE IN ACCORDANCE WITH MANUFACTURER'S RECOMMENDATIONS AND AS REQUIRED FOR THE PURPOSE INTENDED. MAXIMUM LENGTH OF SOCKS SHALL BE 30' FOR 12\"/>
2. UNLESS OTHERWISE DIRECTED, USE BIODEGRADABLE OR PHOTODEGRADABLE CONTAINMENT MESH ONLY WHERE SOCK WILL REMAIN IN PLACE AS PART OF A VEGETATIVE SYSTEM. FOR TEMPORARY INSTALLATIONS, USE RECYCLABLE CONTAINMENT MESH.
3. STUFF SOCKS WITH SUFFICIENT FILTER MATERIAL TO ACHIEVE DENSITY THAT WILL HOLD SHAPE WITHOUT EXCESSIVE DEFORMATION.
4. STAKES SHALL BE 2\"/>
5. COMPOST CRADLE MATERIAL IS INCIDENTAL AND WILL NOT BE PAID FOR SEPARATELY.



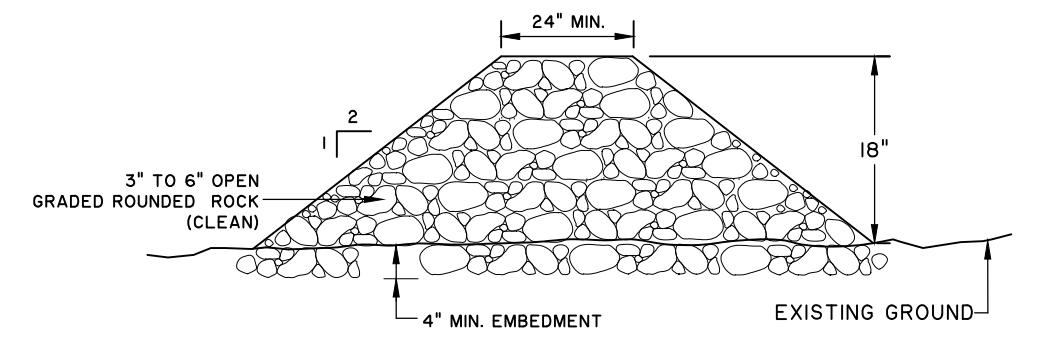
ROCK FILTER DAM AT SEDIMENT TRAP

TYPICAL SEDIMENT TRAP W/ ROCK FILTER DETAIL
NTS

- SEDIMENT TRAP NOTES:
1. THE TRAP SHOULD BE CLEANED WHEN THE CAPACITY HAS BEEN REDUCED BY 1/2 OR THE SEDIMENT HAS ACCUMULATED TO A DEPTH OF 1', WHICHEVER IS LESS.
 2. CLEANING AND REMOVAL OF ACCUMULATED SEDIMENT DEPOSITS IS INCIDENTAL AND WILL NOT BE PAID FOR SEPARATELY.

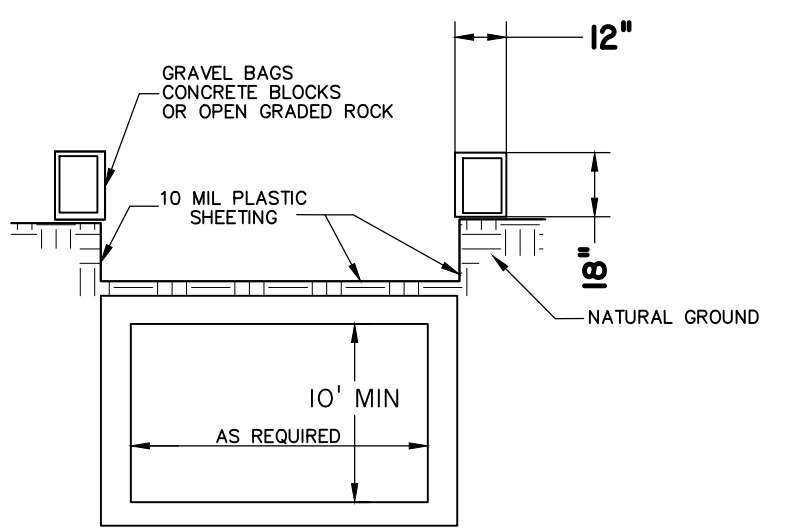


PROFILE



SECTION C-C

- ROCK FILTER DAM NOTES:
1. MAINTAIN A MINIMUM OF 1' BETWEEN TOP OF ROCK FILTER DAM WEIR AND TOP OF EMBANKMENT FOR FILTER DAMS AT SEDIMENT TRAPS.
 2. FILTER DAMS SHOULD BE EMBEDDED A MINIMUM OF 4\"/>
 3. FLOW OUTLET SHOULD BE ONTO A STABILIZED AREA (VEGETATION, ROCK, ETC.).



CONCRETE WASH OUT DETAIL
NTS

1. THE EXCAVATION FOR THE CONCRETE TRUCK WASHOUT SHALL BE A MINIMUM OF 10 FEET WIDE AND OF SUFFICIENT LENGTH AND DEPTH TO ACCOMMODATE 7 GALLONS OF WASHOUT WATER AND CONCRETE PER TRUCK PER DAY AND/OR 50 GALLONS OF WASHOUT WATER AND CONCRETE PER PUMP TRUCK PER DAY.
2. IN THE EVENT THAT THE CONCRETE TRUCK WASHOUT IS CONSTRUCTED ABOVE GROUND, IT SHALL BE 10 FEET WIDE AND 10 FEET LONG, WITH THE SAME REQUIREMENTS FOR CONTAINMENT AS DESCRIBED IN ITEM 1.
3. THE CONTAINMENT AREA SHALL BE LINED WITH 10 MIL PLASTIC SHEETING WITHOUT HOLES OR TEARS, WHERE THERE ARE SEAMS, THESE SHALL BE SECURED ACCORDING TO MANUFACTURERS' DIRECTIONS.
4. THE BERM CONSISTING OF GRAVEL BAGS, CONCRETE BLOCKS OR OPEN GRADED ROCK SHALL BE NO LESS THAN 18 INCHES HIGH AND NO LESS THAN 12 INCHES WIDE.
5. THE PLASTIC SHEETING SHALL BE OF SUFFICIENT SIZE SO THAT IT WILL OVERLAP THE TOP OF THE CONTAINMENT AREA AND BE WRAPPED AROUND THE GRAVEL BAGS, CONCRETE BLOCKS OR OPEN GRADED ROCK AT LEAST 2 TIMES.
6. THE GRAVEL BAGS OR CONCRETE BLOCK SHALL BE PLACED ABUTTING EACH OTHER TO FORM A CONTINUOUS BERM AROUND THE OUTER PERIMETER OF THE CONTAINMENT AREA.
7. THE WASHOUT MATERIAL IN THE CONTAINMENT AREA SHALL NOT EXCEED 50% OF CAPACITY AT ANY TIME.
8. SOLIDS SHALL BE REMOVED FROM CONTAINMENT AREA AND DISPOSED OF PROPERLY. ANY DAMAGE TO THE PLASTIC SHEETING SHALL BE REPAIRED OR SHEETING REPLACED BEFORE THE NEXT USE.

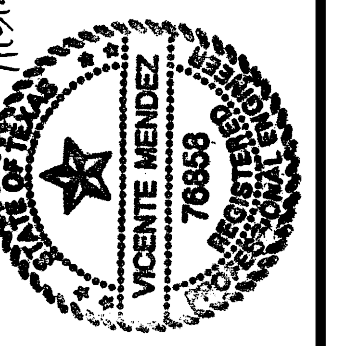
5/15/25 - GRADING & UTILITY PLANS MODIFIED IN REFERENCE WITH PHASE 1 & UPDATED LAYOUT FROM GMS

VP:Vicente Mendez
DATE: 5/15/25

AMBIOTEC
CIVIL ENGINEERING GROUP, INC.

5420 Porcelas Line Road
Brownsville, Texas 78526
Fax (956)548-9399
(956)548-9333

VP:Vicente Mendez
DATE: 5/15/25



SOUTH PADRE ISLAND
BEACH ACCESS #3
PREPARED FOR: CAMERON COUNTY

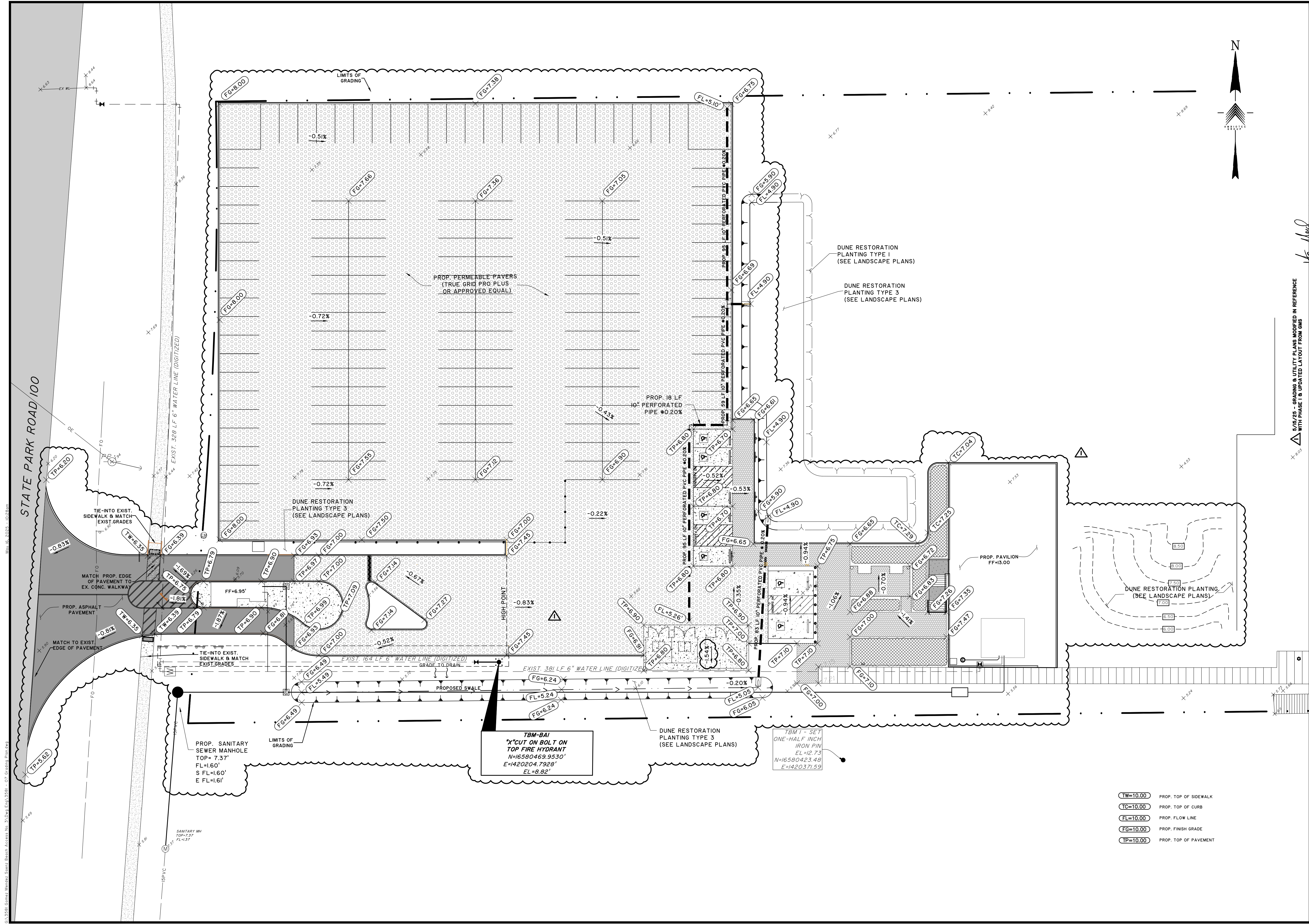
SWPPP DETAILS

SCALE: N.T.S.	DATE: MAY 2025
DESIGN BY: K. SALDIVAR	
DRAWN BY: J. ROBLES, A. CUEVAS	
CHECKED BY: K. SALDIVAR	
APPROVED BY: V.MENDEZ	
PROJECT NO.: 3581	

SHEET

5

OF 10



5/15/25 - GRADING & UTILITY PLANS MODIFIED IN REFERENCE
WITH PHASE I & UPDATED LAYOUT FROM GIS

AMBIOTEC
CIVIL ENGINEERING GROUP, INC.

5420 Porcellos Line Road
Brownsville, Texas 78526
Fax (956)548-9399
(956)548-9333

VICENTE MENDEZ

70883

Professional Engineer

11/19/21

SOUTH PADRE ISLAND
BEACH ACCESS #3

PREPARED FOR: CAMERON COUNTY

GRADING PLAN

SHEET
7
OF 10

SCALE: 1"=20'

DATE: MAY 2025

DESIGN BY: K. SALDIVAR

DRAWN BY: J. ROBLES, A. CUEVAS

CHECKED BY: K. SALDIVAR

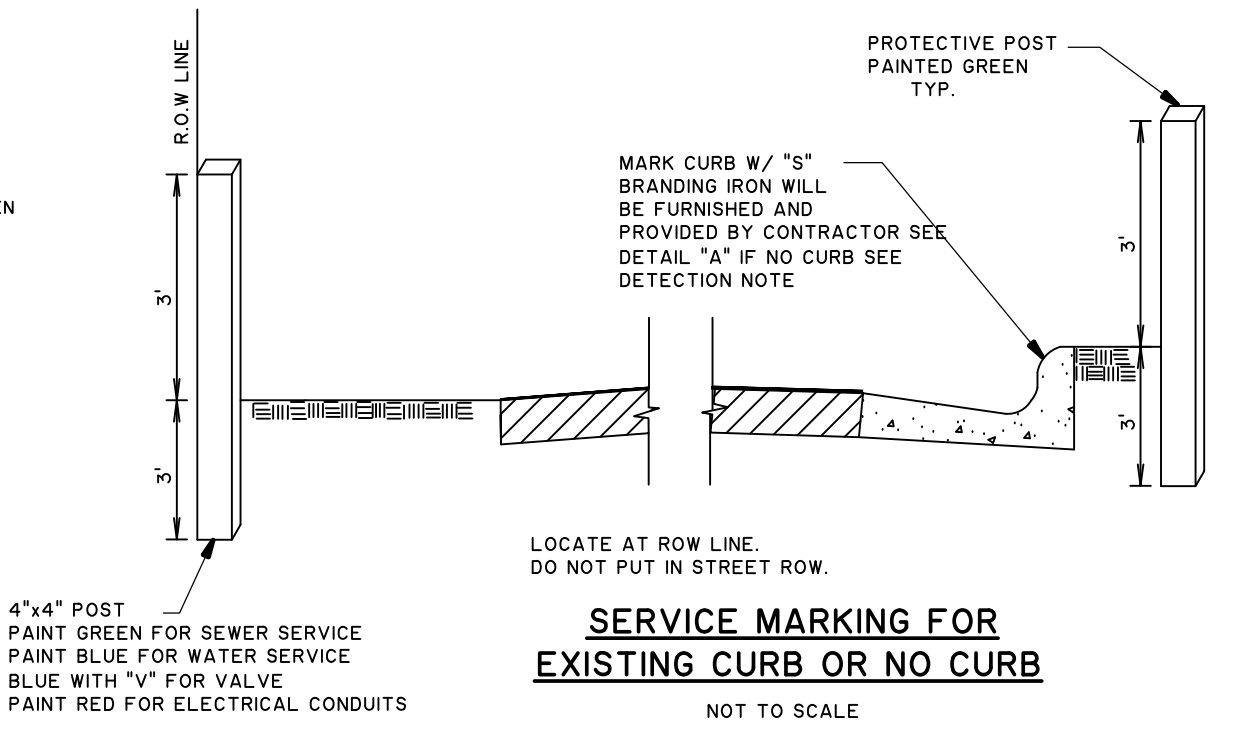
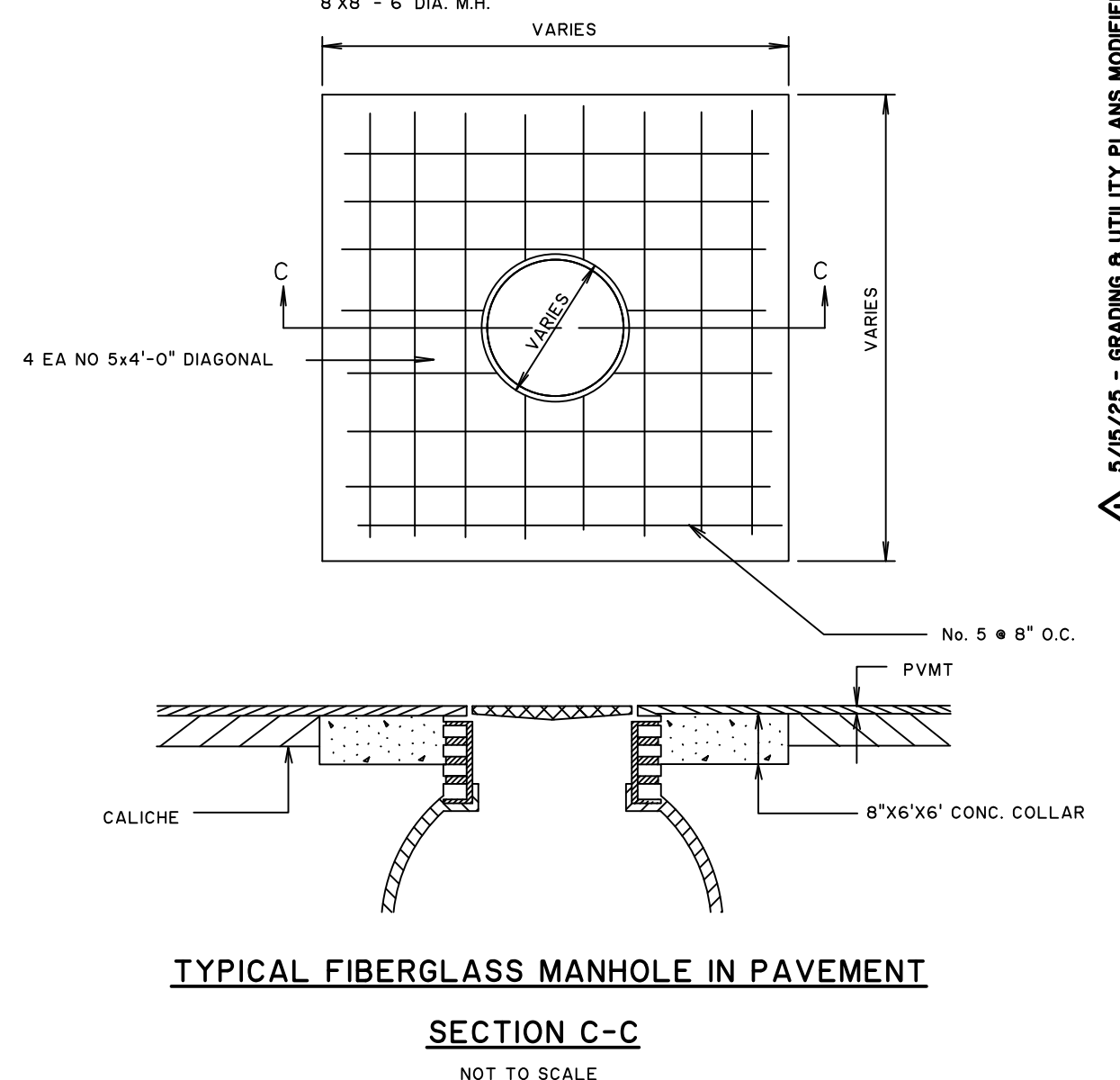
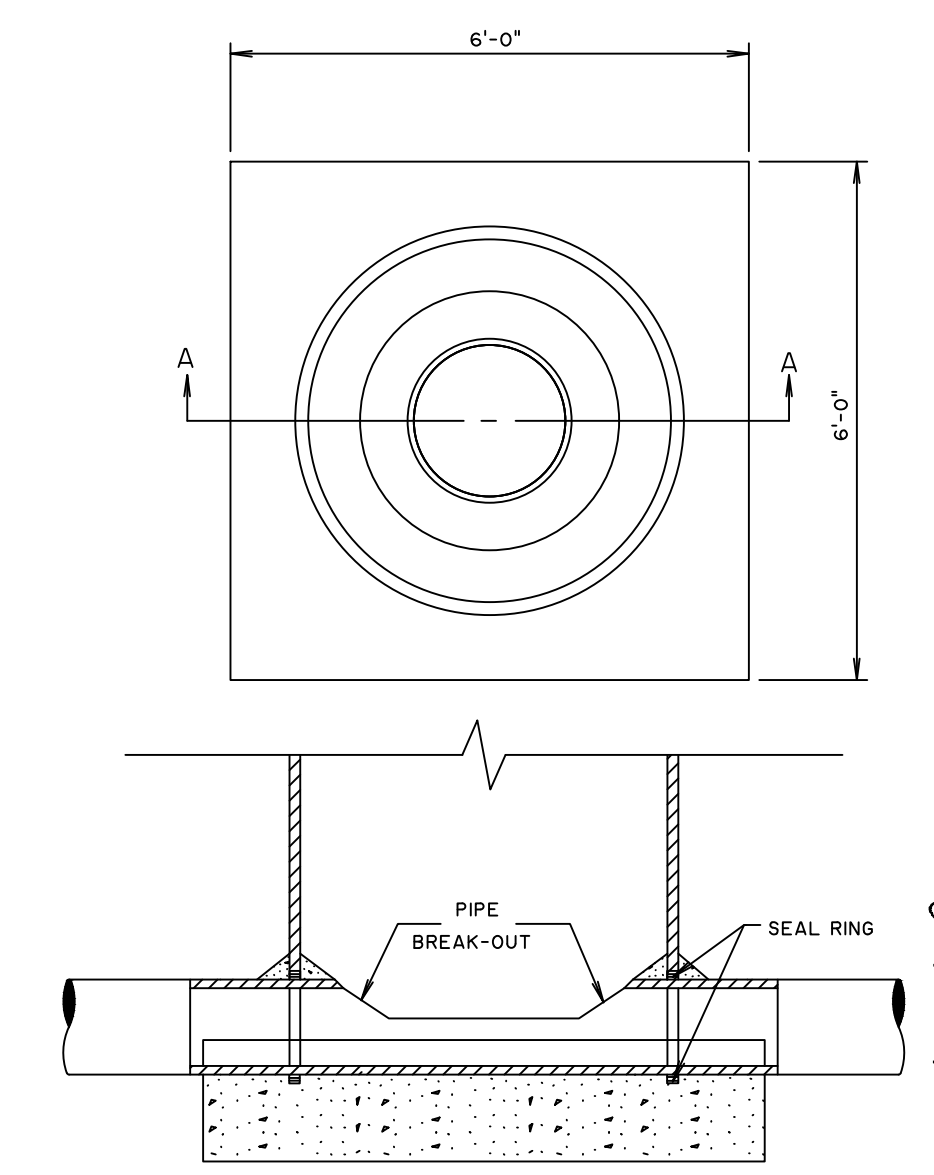
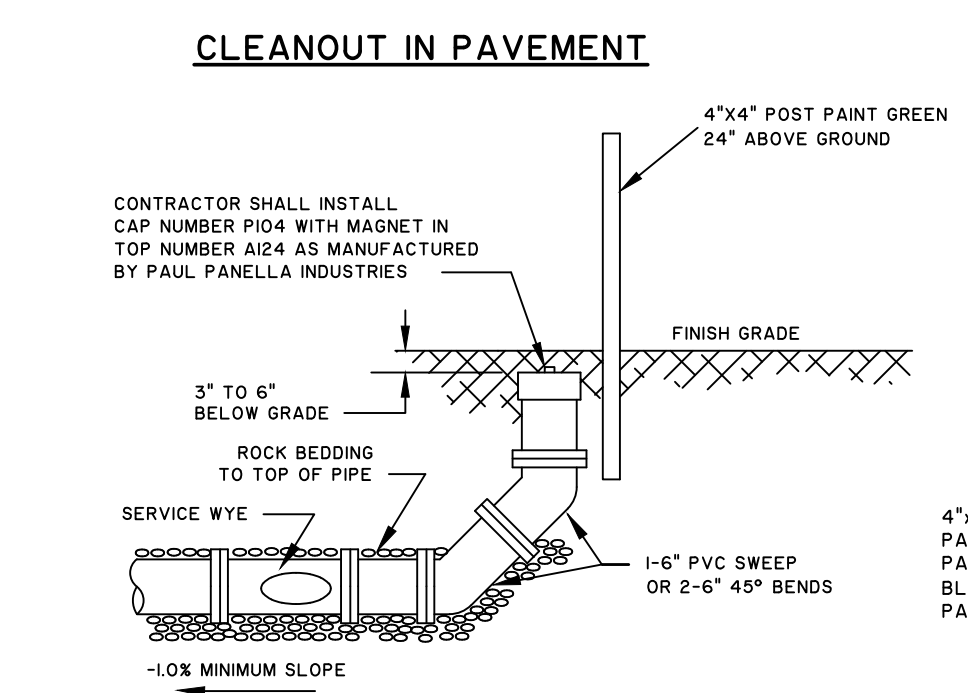
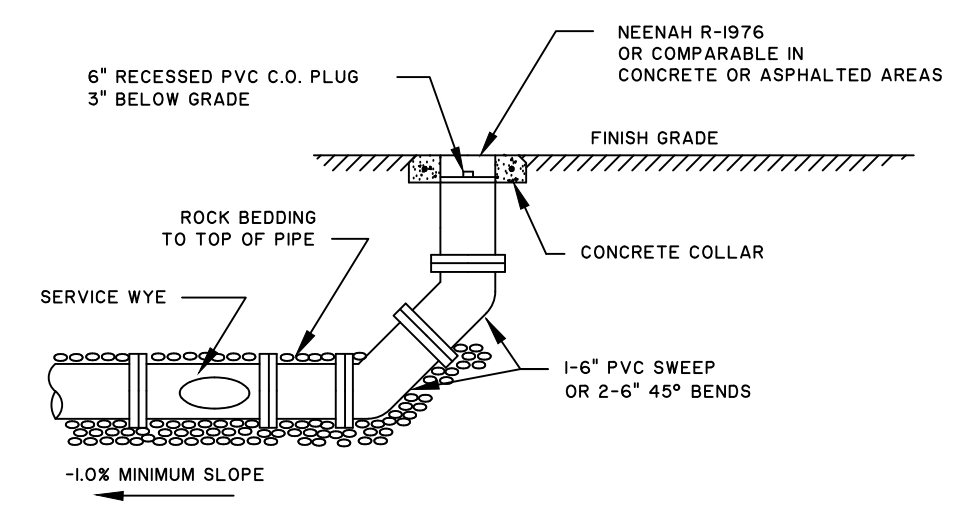
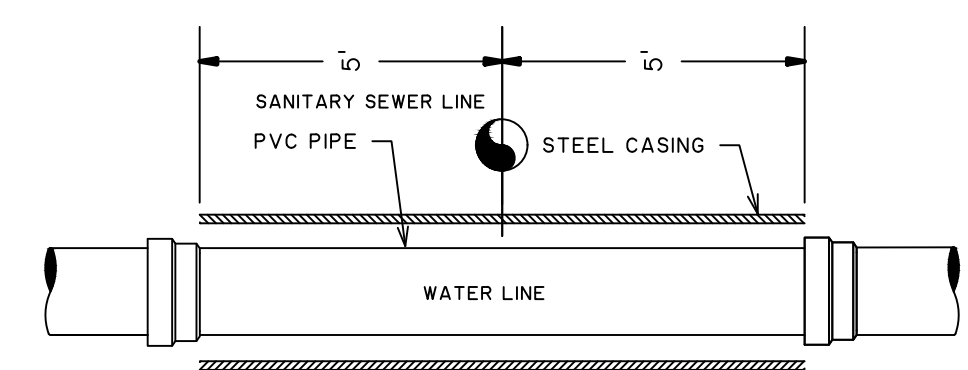
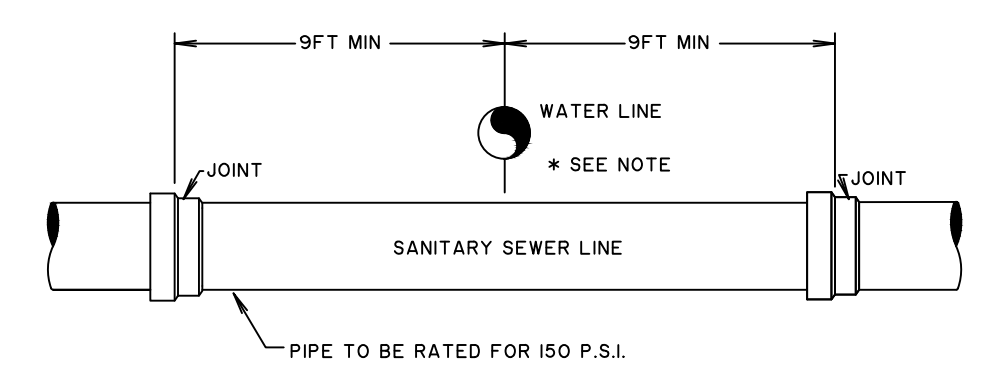
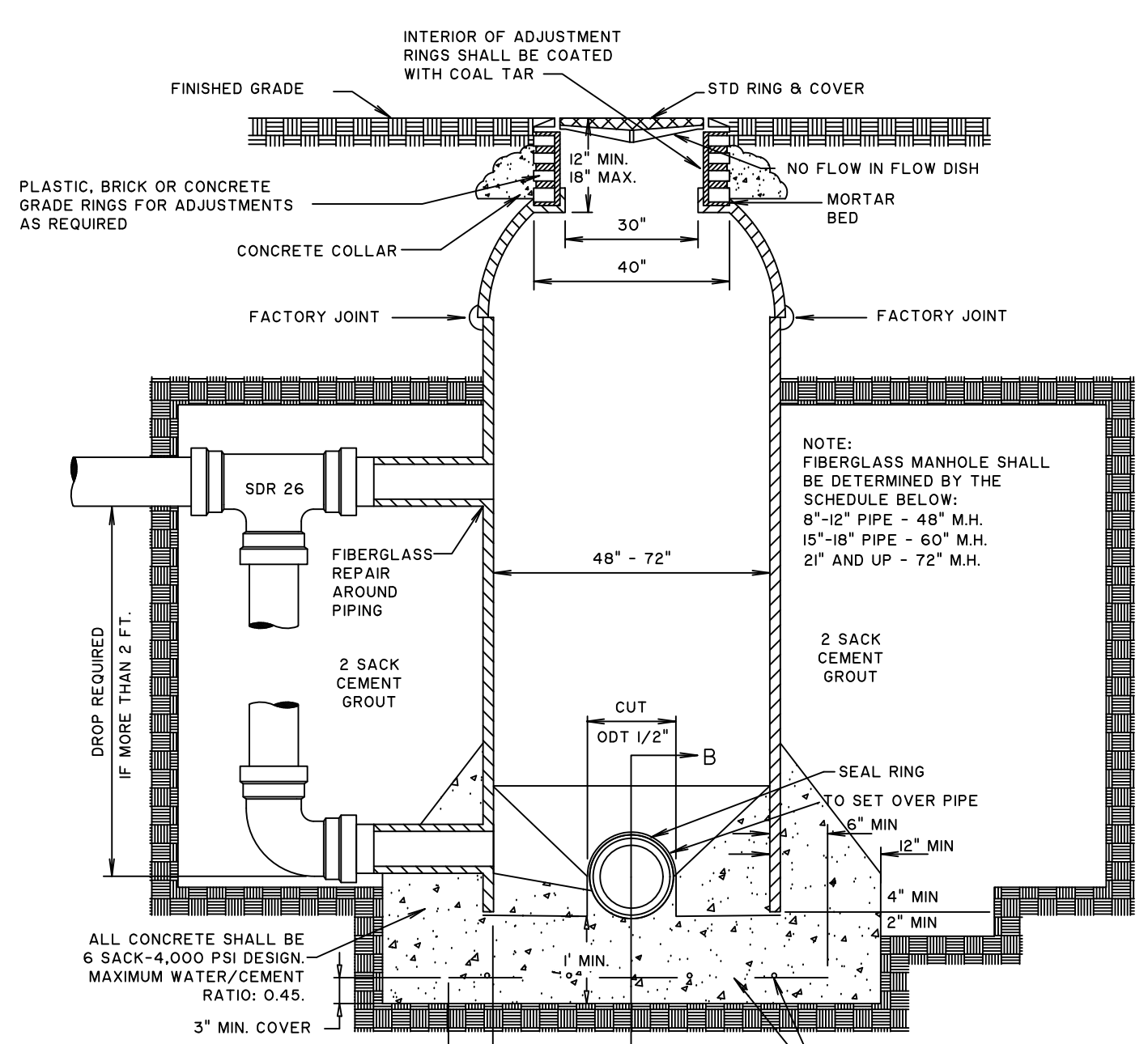
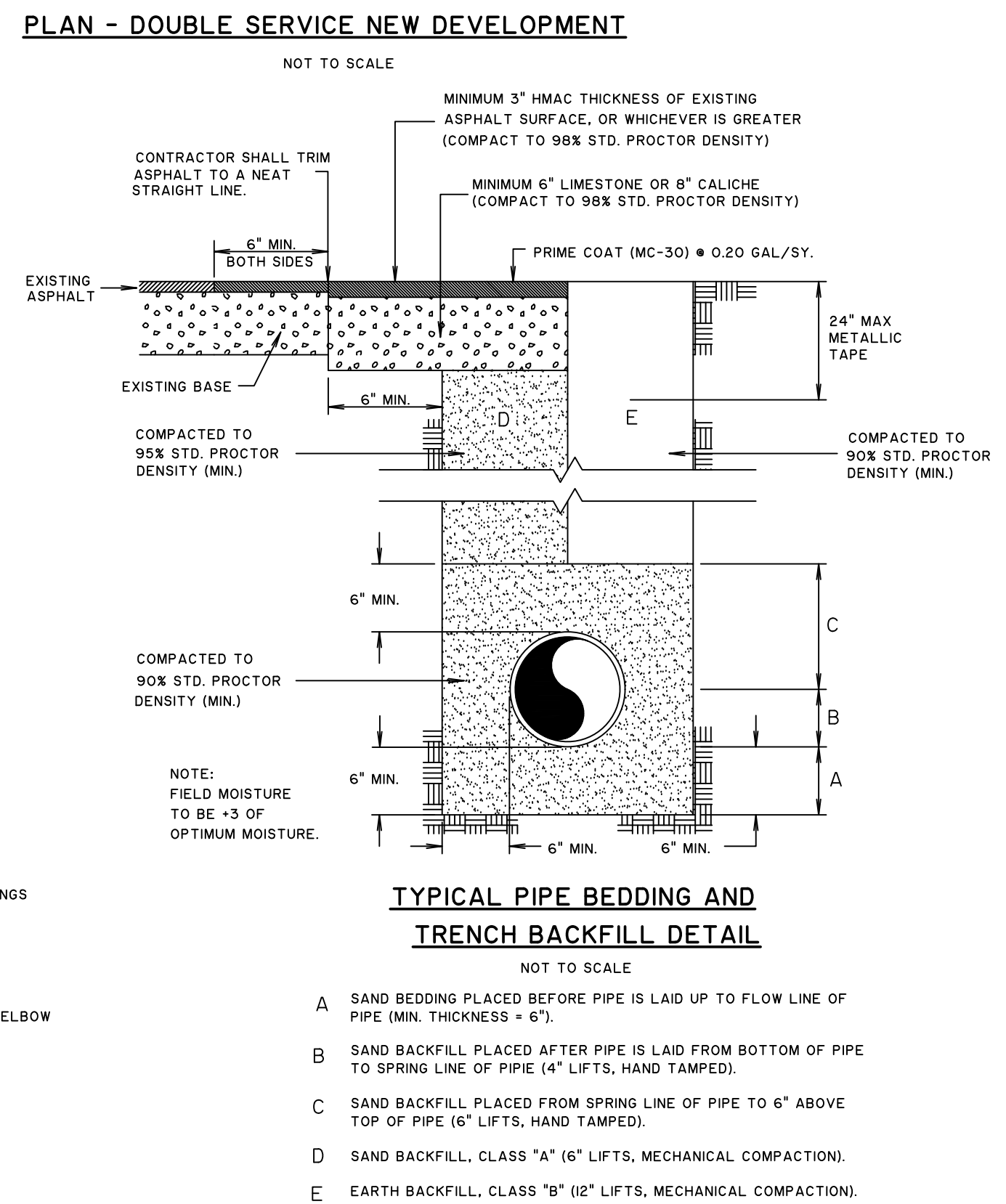
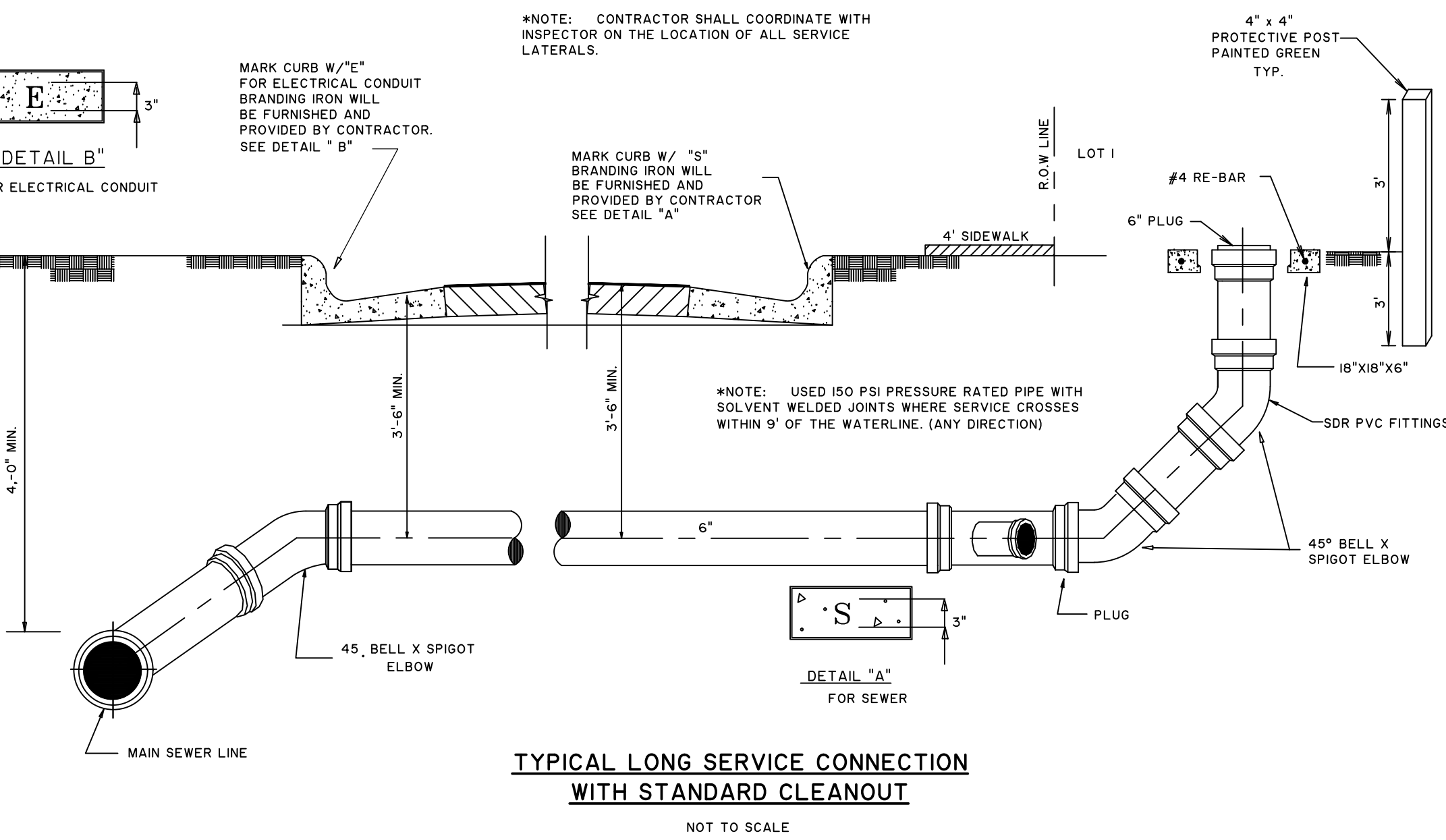
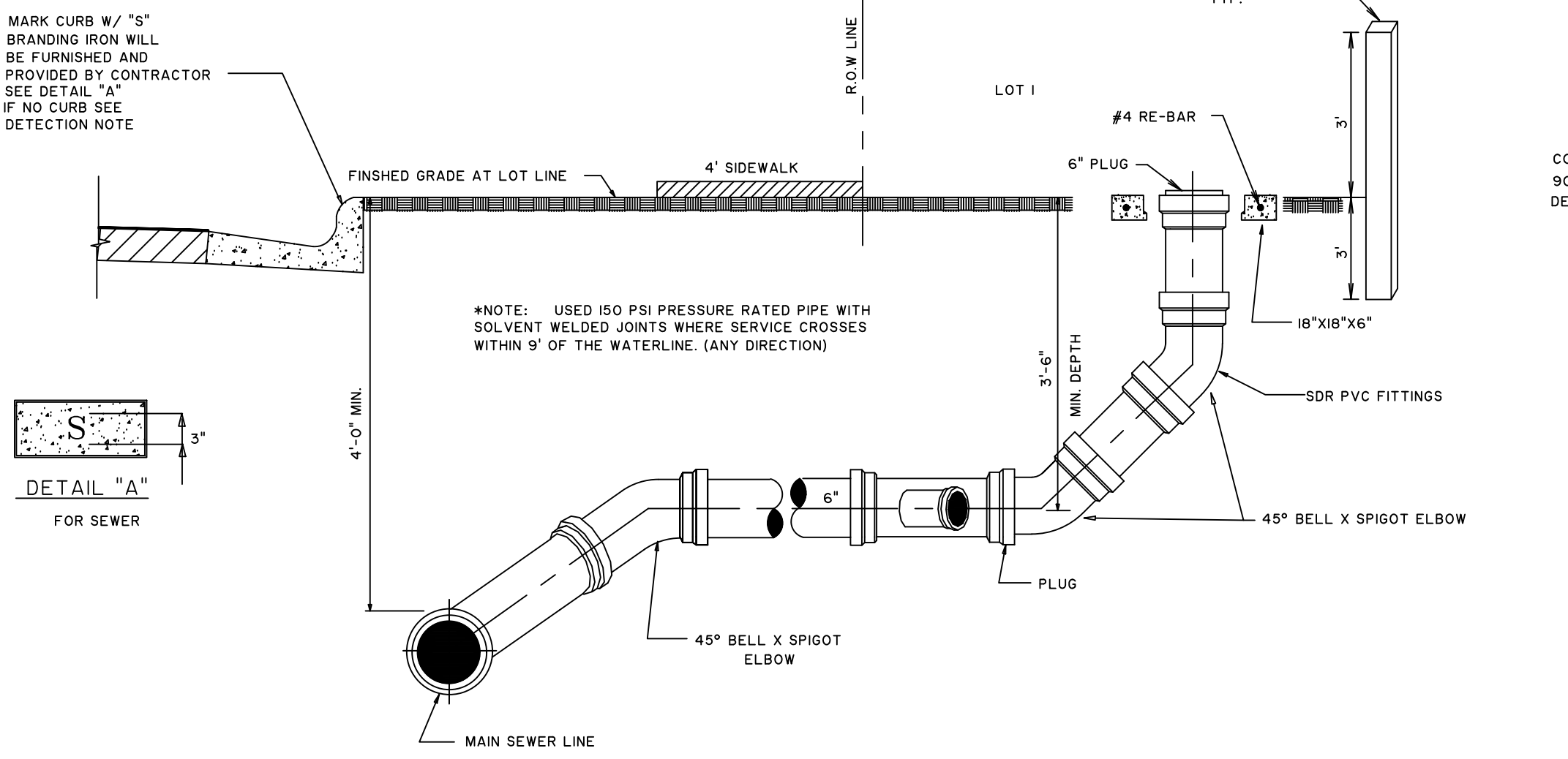
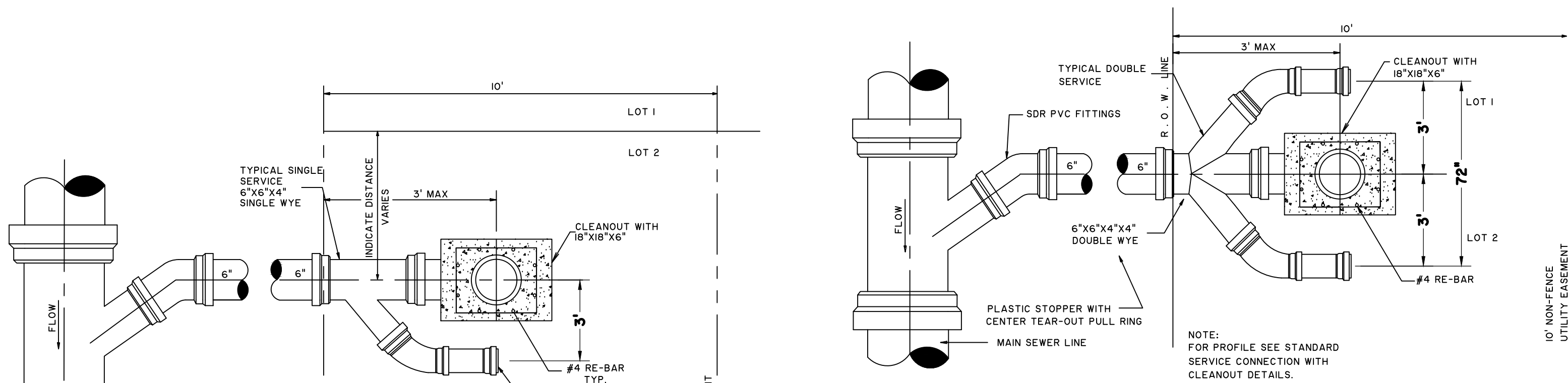
APPROVED BY: V. MENDEZ

PROJECT NO.: 3581

C:\3581\Emmá Mendez\State Beach Access\No. 3\Drawings\Grading\Grading Plan.dwg
Rev. 16, 2/2024 - 0224m

Page 8 of 11

City of San Diego, Department of Public Works, Engineering Division, Sanitary Engineering Section, 1201 La Jolla Village Drive, San Diego, CA 92161



5/15/25 - GRADING & UTILITY PLANS MODIFIED IN REFERENCE WITH PHASE I & UPDATED LAYOUT FROM GIS

AMBIOTEC
CIVIL ENGINEERING GROUP, INC.
5420 Ferndale Line Road
Brownsville, Texas 78526
(956) 548-9399
(956) 548-9333
FAX

VICENTE MENDEZ
16432
CIVIL ENGINEER
STATE OF TEXAS

SOUTH PADRE ISLAND
BEACH ACCESS #3
PREPARED FOR: CAMERON COUNTY

SCALE: N.T.S. DATE: MAY 2025
DESIGN BY: K. SALDIVAR
DRAWN BY: J. ROBLES, A. CUEVAS
CHECKED BY: K. SALDIVAR
APPROVED BY: V. MENDEZ
PROJECT NO.: 3581

SHEET
10
OF 10