



CAMERON COUNTY PURCHASING  
 1100 East Monroe St,  
 Brownsville, Texas 78520  
 (956) 544-0871 Fax: (956) 550-7219

**ADDENDUM # 3 - PAGE 1 of 13**

**DATE OUT: 02/13/2026**

**BID TITLE: Central Estates-Saldivar Colonias in Brownsville Texas –  
 Water-sewer-Line Improvements Construction  
 (HUD) TXCDBG Project No. CFC24-0004**

**BID NUMBER # 260103**

**DEADLINE: ~~February 18, 2026 at 3:00p.m.~~ February 19, 2026 at 3:00p.m.**

*(IN ORDER TO AVOID DISQUALIFICATION – ALL ADDENDUMS MUST BE SIGNED AND RETURNED BY DEADLINE  
 AND INCLUDED IN THE SEALED BID PACKAGE SUBMITTED)*

1. Bid opening was extended for one extra day to:

**Thursday, February 19, 2026 at 3:00 p.m. C.S.T. at Purchasing Dept.**

2. Bid schedule items have been revised.

**Please refer to the revised Bid Schedule and replace previous bid form  
 from addendum # 2.**

3. Please find construction drawing sheets with revisions.

**Note:**

*This addendum shall become part of the BID package, and all RESPONDERS/PARTICIPANTS shall be bound by its content. All aspects of the scope of work/services not covered herein shall remain the same.*

Company Name \_\_\_\_\_ Phone # \_\_\_\_\_

Vendor Signature \_\_\_\_\_ Date \_\_\_\_\_

***Must include and return with BID package***

**Bidders must use the following  
Revised Bid Schedule  
“BID FORMS”  
when submitting this bid.**

Ambiotec Civil Engineering Group, Inc.  
 5420 Paredes Line Road  
 Brownsville, TX 78526  
 Phone (956) 548-9333 / Fax (956) 548-9399  
 TBPE Firm No. F-4126 TBPLS Reg. No. 10005300

# Project Addendum No. 3

<b>Project:</b>	<b>Colonia Central Estates and Praxedis Saldivar Sewer Improvements Project</b>	<b>Date:</b>	<b>February 13, 2026</b>
<b>From:</b>	<b>Alan Cuevas</b>	<b>Project No.:</b>	<b>3188</b>
<b>Owner:</b>	<b>Brownsville Public Utilities Board</b>		

## ADDENDUM No. 3

### CONTRACT DOCUMENT REVISIONS

1. Bid Items – Trench Safety Plan Item was removed from all, except from one street that should cover the entire project. Please refer to the revised Bid Schedule.
2. Bid Items – 7, 8, 9, 10, 22, 23, 31, 32, 41, 42, 52, 53, 62, 63 & 73 for **8” Sanitary Sewer Line and Fiberglass Manholes** were revised to remove language pertaining to pavement, sidewalk, driveway, curb and gutter removal and replacement activities that are now itemized separately under distinct removal and replacement bid items. Please refer to the revised Bid Schedule.
3. Bid Items – 10, 62, 63 & 73 for **8” Sanitary Sewer Line and Fiberglass Manholes** were restructured into **sub-items** to distinguish depth ranges. In limited cases, **bid quantities were adjusted** to reflect updated design information. Please refer to the revised Bid Schedule.
4. Bid Items - 10, 11, 14, 15, 16, 17, 25, 26, 34, 35, 36, 44, 45, 46, 55, 56, 65, 73, 74, 75, 76, 77, 78 & 81; **Bid Items** were revised to include sub-item. **Bid Items** were revised. **Bid Quantities and Units** were revised. Please refer to the revised Bid Schedule.
5. Driveway removal dimensions were deleted from Salida Del Sol. Please refer to revised construction drawings sheets 4-7 attached to the addendum.
6. Where a sanitary sewer crosses a waterline (main or service), the contractor has the option of installing a casing or using a pressure pipe with at least 150 psi rating.

**Bidder must use this Revised Bid Form when submitting bid packet.**

**Bid Schedule**  
**Colonia Central Estates and Praxedis Saldivar**  
**Sewer Improvements Project**  
**Texas Community Development Block Grant (TXCDG)**  
**Contract (CFC24-0004)**

Revised Per  
Addendum No.3  
(February 13, 2026)

**BASE BID**

Item No.	Item	Qty.	Unit	Unit Price	Cost
<b>Salida Del Sol</b>					
1	On-Side Single Short Sanitary Sewer Service (incl. traffic control, dewatering, excavation, removal, disposal & replacement of paving materials, sidewalks, driveways, curb & gutter, backfill, and all appurtenances necessary to complete the work)	9	EA		
2	Off-Side Single Long Sanitary Sewer Service (incl. traffic control, dewatering, excavation, removal, disposal & replacement of paving materials, sidewalks, driveways, curb & gutter, backfill, and all appurtenances necessary to complete the work)	19	EA		
3	Yard Line Connections 0-100 ft. (incl. dewatering, excavation, removal, disposal & replacement of paving materials, sidewalks, driveways, backfill, and all appurtenances necessary to complete the work, cleanouts at every service connection to the house & a max separation of 50 feet between cleanouts) Connection complete to Residence.	4	EA		
4	Yard Line Connections 100-200 ft. (incl. dewatering, excavation, removal, disposal & replacement of paving materials, sidewalks, driveways, backfill, and all appurtenances necessary to complete the work, cleanouts at every service connection to the house & a max separation of 50 feet between cleanouts) Connection complete to Residence.	20	EA		
5	Yard Line Connections 200-300 ft. (incl. dewatering, excavation, removal, disposal & replacement of paving materials, sidewalks, driveways, backfill, and all appurtenances necessary to complete the work, cleanouts at every service connection to the house & a max separation of 50 feet between cleanouts) Connection complete to Residence.	3	EA		
6	Yard Line Connections 300-400 ft. (incl. dewatering, excavation, removal, disposal & replacement of paving materials, sidewalks, driveways, backfill, and all appurtenances necessary to complete the work, cleanouts at every service connection to the house & a max separation of 50 feet between cleanouts) Connection complete to Residence.	1	EA		
7	8-inch PVC Sanitary Sewer Line (6 - 10 Foot Depth) (incl. traffic control, dewatering, bypass pumping, excavation, removal, disposal & replacement of backfill, and all appurtenances necessary to complete the work)	2503	LF		
8	8-inch PVC Sanitary Sewer Line Under CMU Fence (Bore) (6 - 10 Foot Depth) (incl. traffic control, dewatering, bypass pumping, excavation, removal, disposal & replacement of backfill, and all appurtenances necessary to complete the work)	100	LF		
9	8-inch PVC Sanitary Sewer Between Guy/Wire & Powerpole (Bore) (If Needed) (6 - 10 Foot Depth) (incl. traffic control, dewatering, bypass pumping, excavation, removal, disposal & replacement of backfill, and all appurtenances necessary to complete the work)	20	LF		
10	<i>Standard 4-Foot Fiberglass Manhole (6 - 10-Foot Depth) (incl. traffic control, dewatering, bypass pumping, excavation, removal, disposal &amp; replacement of backfill, and all appurtenances necessary to complete the work)</i>	2	EA		
10.1	<i>Standard 4-Foot Fiberglass Manhole (10 - 14-Foot Depth) (incl. traffic control, dewatering, bypass pumping, excavation, removal, disposal &amp; replacement of backfill, and all appurtenances necessary to complete the work)</i>	4	EA		
11	Exist. Septic Tanks To Be Decommissioned	28	EA		
12	Tie-in To Existing 8" Sanitary Sewer Stub Out	1	EA		
13	Remove and Relocate Existing Tree	2	EA		
14	<i>Remove Asphalt Driveway (Inc'l Saw Cutting)</i>	2	EA		
14.1	<i>New Asphalt Driveway</i>	2	EA		
15	<i>Remove Concrete Driveway</i>	3	EA		
15.1	<i>New Concrete Driveway</i>	3	EA		
16	<i>Remove Dirt Driveway</i>	5	EA		
16.1	<i>New Dirt Driveway</i>	5	EA		
17	<i>Remove Caliche Driveway</i>	8	EA		
17.1	<i>New Caliche Driveway</i>	8	EA		
18	Trench Safety Plan (For Entire Project)	1	EA		
19	Trench Safety Implementation	2513	LF		
<b>SALIDA DEL SOL - SUBTOTAL</b>					

**Bid Schedule**  
**Colonia Central Estates and Praxedis Saldivar**  
**Sewer Improvements Project**  
**Texas Community Development Block Grant (TXCDG)**  
**Contract (CFC24-0004)**

Revised Per  
 Addendum No.3  
 (February 13, 2026)

<b>Private Drive I</b>					
20	Single Short Sanitary Sewer Service (incl. traffic control, dewatering, excavation, removal, disposal & replacement of paving materials, sidewalks, driveways, curb & gutter, backfill, and all appurtenances necessary to complete the work)	5	EA		
21	Yard Line Connections 0-100 ft. (incl. dewatering, excavation, removal, disposal & replacement of paving materials, sidewalks, driveways, backfill, and all appurtenances necessary to complete the work, cleanouts at every service connection to the house & a max separation of 50 feet between cleanouts) Connection complete to Residence.	5	EA		
22	8-inch PVC Sanitary Sewer Line (6 - 10 Foot Depth) (incl. traffic control, dewatering, bypass pumping, excavation, removal, disposal & replacement of backfill, and all appurtenances necessary to complete the work)	348	LF		
23	Standard 4-Foot Fiberglass Manhole (6 - 10-Foot Depth) (incl. traffic control, dewatering, bypass pumping, excavation, removal, disposal & replacement of backfill, and all appurtenances necessary to complete the work)	2	EA		
24	Exist. Septic Tanks To Be Decommissioned	5	EA		
25	<i>Remove Caliche Drive</i>	2	EA		
25.1	<i>New Caliche Drive</i>	2	EA		
26	<i>Remove Caliche Drive Entrance</i>	1	EA		
26.1	<i>New Caliche Drive Entrance</i>	1	EA		
27	Trench Safety Implementation	357	LF		
				<b>PRIVATE DRIVE I - SUBTOTAL</b>	
<b>Private Drive II</b>					
28	Single Short Sanitary Sewer Service (incl. traffic control, dewatering, excavation, removal, disposal & replacement of paving materials, sidewalks, driveways, curb & gutter, backfill, and all appurtenances necessary to complete the work)	3	EA		
29	Yard Line Connections 0-100 ft. (incl. dewatering, excavation, removal, disposal & replacement of paving materials, sidewalks, driveways, backfill, and all appurtenances necessary to complete the work, cleanouts at every service connection to the house & a max separation of 50 feet between cleanouts) Connection complete to Residence.	2	EA		
30	Yard Line Connections 100-200 ft. (incl. dewatering, excavation, removal, disposal & replacement of paving materials, sidewalks, driveways, backfill, and all appurtenances necessary to complete the work, cleanouts at every service connection to the house & a max separation of 50 feet between cleanouts) Connection complete to Residence.	1	EA		
31	8-inch PVC Sanitary Sewer Line (6 - 10 Foot Depth) (incl. traffic control, dewatering, bypass pumping, excavation, removal, disposal & replacement of backfill, and all appurtenances necessary to complete the work)	330	LF		
32	Standard 4-Foot Fiberglass Manhole (6 - 10-Foot Depth) (incl. traffic control, dewatering, bypass pumping, excavation, removal, disposal & replacement of backfill, and all appurtenances necessary to complete the work)	2	EA		
33	Exist. Septic Tanks To Be Decommissioned	3	EA		
34	<i>Remove Caliche Drive</i>	3	EA		
34.1	<i>New Caliche Drive</i>	3	EA		
35	<i>Remove Concrete Drive</i>	1	EA		
35.1	<i>New Concrete Drive</i>	1	EA		
36	<i>Remove Caliche Drive Entrance</i>	1	EA		
36.1	<i>New Caliche Drive Entrance</i>	1	EA		
37	Trench Safety Implementation	340	LF		
				<b>PRIVATE DRIVE II - SUBTOTAL</b>	

**Bid Schedule**  
**Colonia Central Estates and Praxedis Saldivar**  
**Sewer Improvements Project**  
**Texas Community Development Block Grant (TXCDG)**  
**Contract (CFC24-0004)**

Revised Per  
 Addendum No.3  
 (February 13, 2026)

<b>Private Drive III</b>					
38	Single Short Sanitary Sewer Service (incl. traffic control, dewatering, excavation, removal, disposal & replacement of paving materials, sidewalks, driveways, curb & gutter, backfill, and all appurtenances necessary to complete the work)	3	EA		
39	Yard Line Connections 0-100 ft. (incl. dewatering, excavation, removal, disposal & replacement of paving materials, sidewalks, driveways, backfill, and all appurtenances necessary to complete the work, cleanouts at every service connection to the house & a max separation of 50 feet between cleanouts) Connection complete to Residence.	2	EA		
40	Yard Line Connections 100-200 ft. (incl. dewatering, excavation, removal, disposal & replacement of paving materials, sidewalks, driveways, backfill, and all appurtenances necessary to complete the work, cleanouts at every service connection to the house & a max separation of 50 feet between cleanouts) Connection complete to Residence.	1	EA		
41	8-inch PVC Sanitary Sewer Line (6 - 10 Foot Depth) (incl. traffic control, dewatering, bypass pumping, excavation, removal, disposal & replacement of backfill, and all appurtenances necessary to complete the work)	475	LF		
42	Standard 4-Foot Fiberglass Manhole (6 - 10-Foot Depth) (incl. traffic control, dewatering, bypass pumping, excavation, removal, disposal & replacement of backfill, and all appurtenances necessary to complete the work)	3	EA		
43	Exist. Septic Tanks To Be Decommissioned	3	EA		
44	<i>Remove Caliche Drive</i>	1	EA		
44.1	<i>New Caliche Drive</i>	1	EA		
45	<i>Remove Asphalt Drive (Inc'l Saw Cutting)</i>	1	EA		
45.1	<i>New Asphalt Drive</i>	1	EA		
46	<i>Remove Asphalt Drive Entrance (Inc'l Saw Cutting)</i>	1	EA		
46.1	<i>New Asphalt Drive Entrance</i>	1	EA		
47	Trench Safety Implementation	485	LF		
			<b>PRIVATE DRIVE III - SUBTOTAL</b>		
<b>Private Drive IV</b>					
48	Single Short Sanitary Sewer Service (incl. traffic control, dewatering, excavation, removal, disposal & replacement of paving materials, sidewalks, driveways, curb & gutter, backfill, and all appurtenances necessary to complete the work)	9	EA		
49	Single Long Sanitary Sewer Service (incl. traffic control, dewatering, excavation, removal, disposal & replacement of paving materials, sidewalks, driveways, curb & gutter, backfill, and all appurtenances necessary to complete the work)	2	EA		
50	Yard Line Connections 0-100 ft. (incl. dewatering, excavation, removal, disposal & replacement of paving materials, sidewalks, driveways, backfill, and all appurtenances necessary to complete the work, cleanouts at every service connection to the house & a max separation of 50 feet between cleanouts) Connection complete to Residence.	5	EA		
51	Yard Line Connections 100-200 ft. (incl. dewatering, excavation, removal, disposal & replacement of paving materials, sidewalks, driveways, backfill, and all appurtenances necessary to complete the work, cleanouts at every service connection to the house & a max separation of 50 feet between cleanouts) Connection complete to Residence.	6	EA		
52	8-inch PVC Sanitary Sewer Line (6 - 10 Foot Depth) (incl. traffic control, dewatering, bypass pumping, excavation, removal, disposal & replacement of backfill, and all appurtenances necessary to complete the work)	1705	LF		
53	Standard 4-Foot Fiberglass Manhole (6 - 10-Foot Depth) (incl. traffic control, dewatering, bypass pumping, excavation, removal, disposal & replacement of backfill, and all appurtenances necessary to complete the work)	7	EA		
54	Exist. Septic Tanks To Be Decommissioned	11	EA		
55	<i>Remove Caliche Drive</i>	1	EA		
55.1	<i>New Caliche Drive</i>	1	EA		
56	<i>Remove Asphalt Drive Entrance (Inc'l Saw Cutting)</i>	1	EA		
56.1	<i>New Asphalt Drive Entrance</i>	1	EA		
57	Trench Safety Implementation	1715	LF		
			<b>PRIVATE DRIVE IV - SUBTOTAL</b>		

**Bid Schedule**  
**Colonia Central Estates and Praxedis Saldivar**  
**Sewer Improvements Project**  
**Texas Community Development Block Grant (TXCDG)**  
**Contract (CFC24-0004)**

Revised Per  
 Addendum No.3  
 (February 13, 2026)

<b>N. Central Ave.</b>					
58	Off-Side Single Long Sanitary Sewer Service (incl. traffic control, dewatering, excavation, removal, disposal & replacement of paving materials, sidewalks, driveways, curb & gutter, backfill, and all appurtenances necessary to complete the work)	12	EA		
59	Yard Line Connections 0-100 ft. (incl. dewatering, excavation, removal, disposal & replacement of paving materials, sidewalks, driveways, backfill, and all appurtenances necessary to complete the work, cleanouts at every service connection to the house & a max separation of 50 feet between cleanouts) Connection complete to Residence.	1	EA		
60	Yard Line Connections 100-200 ft. (incl. dewatering, excavation, removal, disposal & replacement of paving materials, sidewalks, driveways, backfill, and all appurtenances necessary to complete the work, cleanouts at every service connection to the house & a max separation of 50 feet between cleanouts) Connection complete to Residence.	10	EA		
61	Yard Line Connections 200-300 ft. (incl. dewatering, excavation, removal, disposal & replacement of paving materials, sidewalks, driveways, backfill, and all appurtenances necessary to complete the work, cleanouts at every service connection to the house & a max separation of 50 feet between cleanouts) Connection complete to Residence.	1	EA		
62	<i>8-inch PVC Sanitary Sewer Line (10 - 14 Foot Depth) (incl. traffic control, dewatering, bypass pumping, excavation, removal, disposal &amp; replacement of backfill, and all appurtenances necessary to complete the work)</i>	594	LF		
63	<i>Standard 4-Foot Fiberglass Manhole (10 - 14-Foot Depth) (incl. traffic control, dewatering, bypass pumping, excavation, removal, disposal &amp; replacement of backfill, and all appurtenances necessary to complete the work)</i>	2	EA		
64	Exist. Septic Tanks To Be Decommissioned	12	EA		
65	<i>Remove Asphalt Pavement (Inc'l Saw Cutting)</i>	362	SF		
65.1	<i>New Asphalt Pavement</i>	362	SF		
66	Tie-in Proposed 8" Sanitary Sewer Line to Existing Sanitary Sewer Manhole	1	EA		
67	Trench Safety Implementation	604	LF		
<b>N. CENTRAL AVE. - SUBTOTAL</b>					

**Bid Schedule**  
**Colonia Central Estates and Praxedis Saldivar**  
**Sewer Improvements Project**  
**Texas Community Development Block Grant (TXCDG)**  
**Contract (CFC24-0004)**

Revised Per  
 Addendum No.3  
 (February 13, 2026)

<b>Michelle Road</b>					
68	On-Side Single Short Sanitary Sewer Service (incl. traffic control, dewatering, excavation, removal, disposal & replacement of paving materials, sidewalks, driveways, curb & gutter, backfill, and all appurtenances necessary to complete the work)	10	EA		
69	Off-Side Single Long Sanitary Sewer Service (incl. traffic control, dewatering, excavation, removal, disposal & replacement of paving materials, sidewalks, driveways, curb & gutter, backfill, and all appurtenances necessary to complete the work)	11	EA		
70	Yard Line Connections 100-200 ft. (incl. dewatering, excavation, removal, disposal & replacement of paving materials, sidewalks, driveways, backfill, and all appurtenances necessary to complete the work, cleanouts at every service connection to the house & a max separation of 50 feet between cleanouts) Connection complete to Residence.	19	EA		
71	Yard Line Connections 200-300 ft. (incl. dewatering, excavation, removal, disposal & replacement of paving materials, sidewalks, driveways, backfill, and all appurtenances necessary to complete the work, cleanouts at every service connection to the house & a max separation of 50 feet between cleanouts) Connection complete to Residence.	2	EA		
72	8-inch PVC Sanitary Sewer Line (6 - 10 Foot Depth) (incl. traffic control, dewatering, bypass pumping, excavation, removal, disposal & replacement of backfill, and all appurtenances necessary to complete the work)	1225	LF		
73	<i>Standard 4-Foot Fiberglass Manhole (6 - 10-Foot Depth) (incl. traffic control, dewatering, bypass pumping, excavation, removal, disposal &amp; replacement of backfill, and all appurtenances necessary to complete the work)</i>	4	EA		
73.1	<i>Standard 4-Foot Fiberglass Manhole (10 - 14-Foot Depth) (incl. traffic control, dewatering, bypass pumping, excavation, removal, disposal &amp; replacement of backfill, and all appurtenances necessary to complete the work)</i>	1	EA		
74	Exist. Septic Tanks To Be Decommissioned	21	EA		
75	<i>Remove Concrete Sidewalk</i>	11	EA		
75.1	<i>New Concrete Sidewalk</i>	11	EA		
76	<i>Remove Curb &amp; Gutter</i>	1150	LF		
76.1	<i>New Curb and Gutter</i>	1150	LF		
77	<i>Remove Concrete Driveway</i>	14	EA		
77.1	<i>New Concrete Driveway</i>	14	EA		
78	<i>Remove Dirt Driveway</i>	1	EA		
78.1	<i>New Dirt Driveway</i>	1	EA		
79	Remove and Relocate Existing Mailbox	6	EA		
80	Remove and Repair (Relocate if possible) Brick Mailbox w/planter on each side	2	EA		
81	<i>Remove Caliche Driveway</i>	1	EA		
81.1	<i>New Caliche Driveway</i>	1	EA		
82	Trench Safety Implementation	1235	LF		
<b>MICHELLE ROAD - SUBTOTAL</b>					
<b>Total Base Bid:</b>					

**TOTAL BASE BID AMOUNT (ITEMS 1-82):** \_\_\_\_\_

\_\_\_\_\_

(written in words)

**Bid Schedule**  
**Colonia Central Estates and Praxedis Saldivar**  
**Sewer Improvements Project**  
**Texas Community Development Block Grant (TXCDG)**  
**Contract (CFC24-0004)**

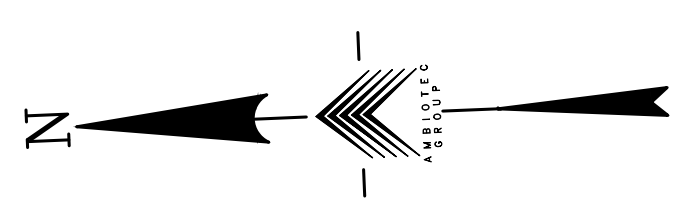
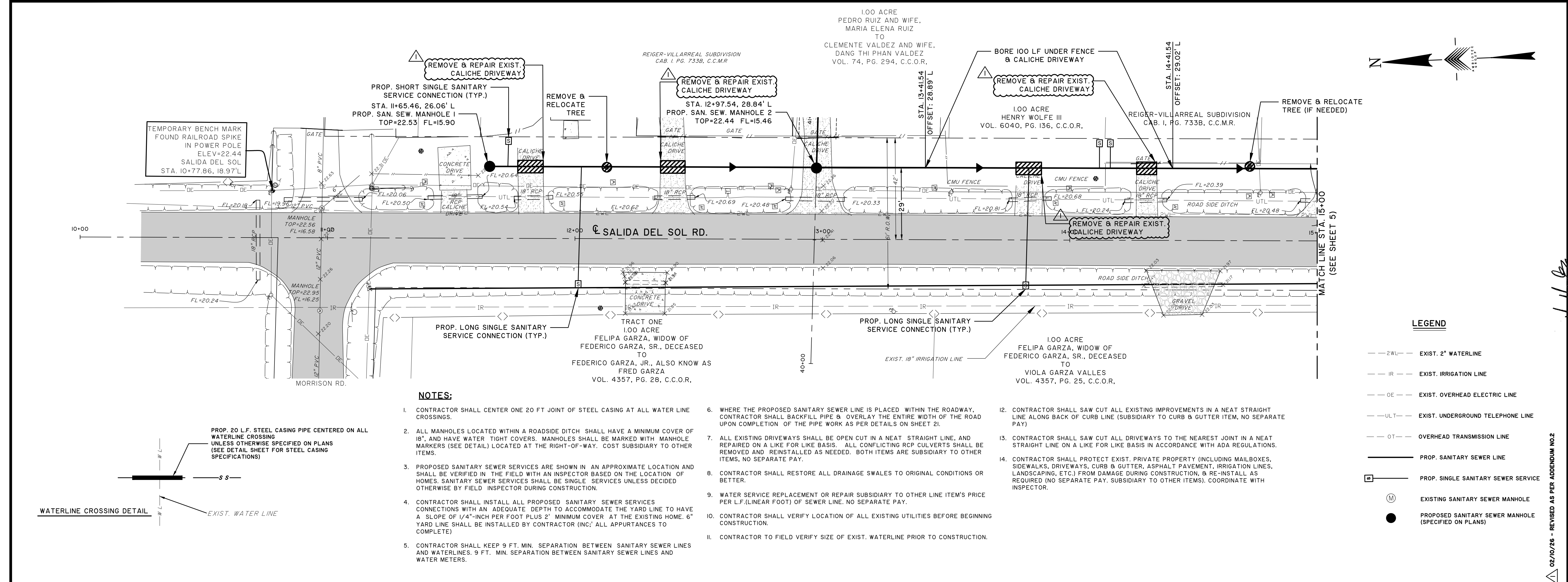
Revised Per  
 Addendum No.3  
 (February 13, 2026)

**ALTERNATE BID**

Item No.	Item	Qty.	Unit	Unit Price	Cost
<b><u>Salida Del Sol</u></b>					
1.A	On-Side Double Short Sanitary Sewer Service (incl. traffic control, dewatering, excavation, removal, disposal & replacement of paving materials, sidewalks, driveways, curb & gutter, backfill, and all appurtenances necessary to complete the work)	2	EA		
2.A	Off-Side Double Long Sanitary Sewer Service (incl. traffic control, dewatering, excavation, removal, disposal & replacement of paving materials, sidewalks, driveways, curb & gutter, backfill, and all appurtenances necessary to complete the work)	6	EA		
<b>SALIDA DEL SOL - SUBTOTAL</b>					
<b><u>Private Drive I</u></b>					
20.A	Double Short Sanitary Sewer Service (incl. traffic control, dewatering, excavation, removal, disposal & replacement of paving materials, sidewalks, driveways, curb & gutter, backfill, and all appurtenances necessary to complete the work)	1	EA		
22.A	6" Long Yard Line Connection (incl. dewatering, excavation, removal, disposal & replacement of paving materials, sidewalks, driveways, backfill, and all appurtenances necessary to complete the work, cleanouts at every service connection to the house & a max separation of 50 feet between cleanouts)	348	LF		
<b>PRIVATE DRIVE I - SUBTOTAL</b>					
<b><u>Private Drive II</u></b>					
31.A	6" Long Yard Line Service Connection (incl. dewatering, excavation, removal, disposal & replacement of paving materials, sidewalks, driveways, backfill, and all appurtenances necessary to complete the work, cleanouts at every service connection to the house & a max separation of 50 feet between cleanouts)	330	LF		
<b>PRIVATE DRIVE II - SUBTOTAL</b>					
<b><u>Private Drive III</u></b>					
41.A	6" Long Yard Line Service Connection (incl. dewatering, excavation, removal, disposal & replacement of paving materials, sidewalks, driveways, backfill, and all appurtenances necessary to complete the work, cleanouts at every service connection to the house & a max separation of 50 feet between cleanouts)	475	LF		
<b>PRIVATE DRIVE III - SUBTOTAL</b>					
<b><u>Private Drive IV</u></b>					
52.A	6" Long Yard Line Service Connection (incl. dewatering, excavation, removal, disposal & replacement of paving materials, sidewalks, driveways, backfill, and all appurtenances necessary to complete the work, cleanouts at every service connection to the house & a max separation of 50 feet between cleanouts)	1705	LF		
<b>PRIVATE DRIVE IV - SUBTOTAL</b>					
<b><u>N. Central Ave.</u></b>					
62.A	Off-Side Double Long Sanitary Sewer Service (incl. traffic control, dewatering, excavation, removal, disposal & replacement of paving materials, sidewalks, driveways, curb & gutter, backfill, and all appurtenances necessary to complete the work)	5	EA		
<b>N. CENTRAL AVE. - SUBTOTAL</b>					
<b><u>Michelle Road</u></b>					
68.A	On-Side Double Short Sanitary Sewer Service (incl. traffic control, dewatering, excavation, removal, disposal & replacement of paving materials, sidewalks, driveways, curb & gutter, backfill, and all appurtenances necessary to complete the work)	4	EA		
69.A	Off-Side Double Long Sanitary Sewer Service (incl. traffic control, dewatering, excavation, removal, disposal & replacement of paving materials, sidewalks, driveways, curb & gutter, backfill, and all appurtenances necessary to complete the work)	4	EA		
<b>MICHELLE ROAD - SUBTOTAL</b>					
<b>Total Alternate Bid:</b>					

**TOTAL ALTERNATE BID AMOUNT:** \_\_\_\_\_

(written in words) \_\_\_\_\_

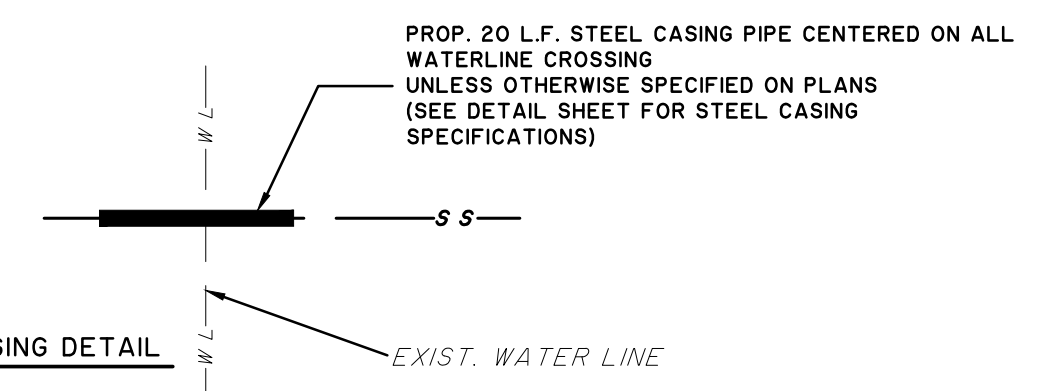


**LEGEND**

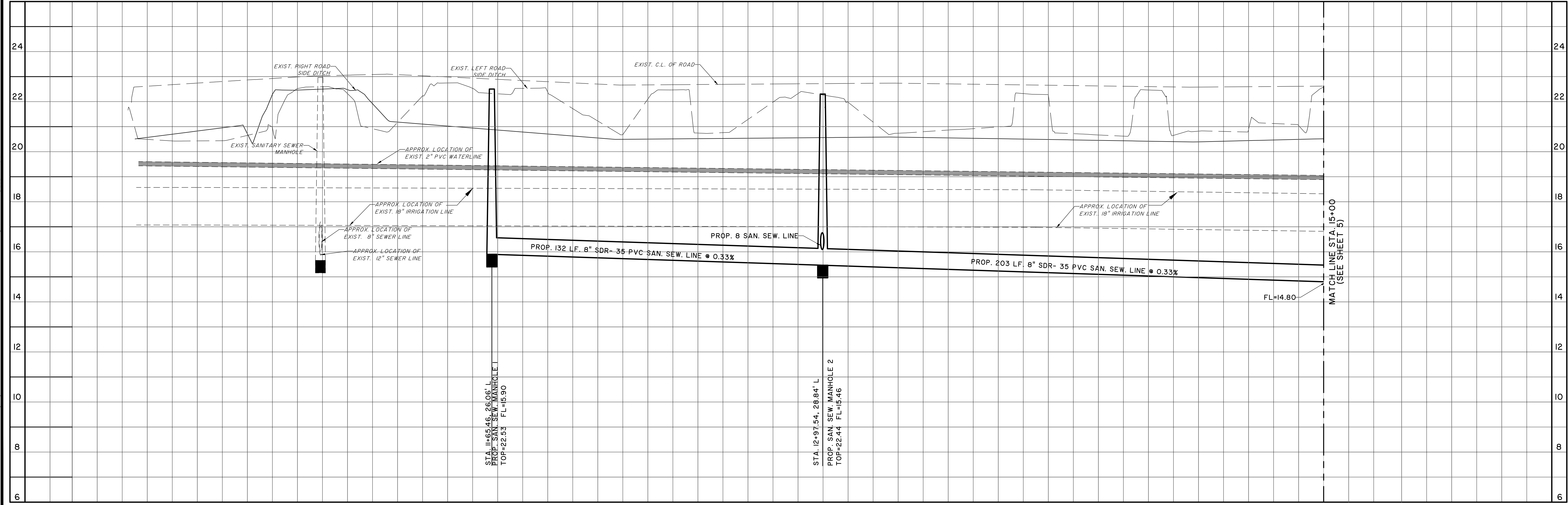
- 2WL --- EXIST. 2" WATERLINE
- IR --- EXIST. IRRIGATION LINE
- OE --- EXIST. OVERHEAD ELECTRIC LINE
- UTL --- EXIST. UNDERGROUND TELEPHONE LINE
- OT --- OVERHEAD TRANSMISSION LINE
- --- PROP. SANITARY SEWER LINE
- --- PROP. SINGLE SANITARY SEWER SERVICE
- ⊙ --- EXISTING SANITARY SEWER MANHOLE
- --- PROPOSED SANITARY SEWER MANHOLE (SPECIFIED ON PLANS)

**NOTES:**

1. CONTRACTOR SHALL CENTER ONE 20 FT JOINT OF STEEL CASING AT ALL WATER LINE CROSSINGS.
2. ALL MANHOLES LOCATED WITHIN A ROADSIDE DITCH SHALL HAVE A MINIMUM COVER OF 18", AND HAVE WATER TIGHT COVERS. MANHOLES SHALL BE MARKED WITH MANHOLE MARKERS (SEE DETAIL) LOCATED AT THE RIGHT-OF-WAY. COST SUBSIDIARY TO OTHER ITEMS.
3. PROPOSED SANITARY SEWER SERVICES ARE SHOWN IN AN APPROXIMATE LOCATION AND SHALL BE VERIFIED IN THE FIELD WITH AN INSPECTOR BASED ON THE LOCATION OF HOMES. SANITARY SEWER SERVICES SHALL BE SINGLE SERVICES UNLESS DECIDED OTHERWISE BY FIELD INSPECTOR DURING CONSTRUCTION.
4. CONTRACTOR SHALL INSTALL ALL PROPOSED SANITARY SEWER SERVICES CONNECTIONS WITH AN ADEQUATE DEPTH TO ACCOMMODATE THE YARD LINE TO HAVE A SLOPE OF 1/4"-INCH PER FOOT PLUS 2" MINIMUM COVER AT THE EXISTING HOME. 6" YARD LINE SHALL BE INSTALLED BY CONTRACTOR (INC. ALL APPURTANCES TO COMPLETE).
5. CONTRACTOR SHALL KEEP 9 FT. MIN. SEPARATION BETWEEN SANITARY SEWER LINES AND WATERLINES. 9 FT. MIN. SEPARATION BETWEEN SANITARY SEWER LINES AND WATER METERS.
6. WHERE THE PROPOSED SANITARY SEWER LINE IS PLACED WITHIN THE ROADWAY, CONTRACTOR SHALL BACKFILL PIPE & OVERLAY THE ENTIRE WIDTH OF THE ROAD UPON COMPLETION OF THE PIPE WORK AS PER DETAILS ON SHEET 21.
7. ALL EXISTING DRIVEWAYS SHALL BE OPEN CUT IN A NEAT STRAIGHT LINE, AND REPAIRED ON A LIKE FOR LIKE BASIS. ALL CONFLICTING RCP CULVERTS SHALL BE REMOVED AND REINSTALLED AS NEEDED. BOTH ITEMS ARE SUBSIDIARY TO OTHER ITEMS. NO SEPARATE PAY.
8. CONTRACTOR SHALL RESTORE ALL DRAINAGE SWALES TO ORIGINAL CONDITIONS OR BETTER.
9. WATER SERVICE REPLACEMENT OR REPAIR SUBSIDIARY TO OTHER LINE ITEM'S PRICE PER L.F.(LINEAR FOOT) OF SEWER LINE. NO SEPARATE PAY.
10. CONTRACTOR SHALL VERIFY LOCATION OF ALL EXISTING UTILITIES BEFORE BEGINNING CONSTRUCTION.
11. CONTRACTOR TO FIELD VERIFY SIZE OF EXIST. WATERLINE PRIOR TO CONSTRUCTION.
12. CONTRACTOR SHALL SAW CUT ALL EXISTING IMPROVEMENTS IN A NEAT STRAIGHT LINE ALONG BACK OF CURB LINE (SUBSIDIARY TO CURB & GUTTER ITEM, NO SEPARATE PAY)
13. CONTRACTOR SHALL SAW CUT ALL DRIVEWAYS TO THE NEAREST JOINT IN A NEAT STRAIGHT LINE ON A LIKE FOR LIKE BASIS IN ACCORDANCE WITH ADA REGULATIONS.
14. CONTRACTOR SHALL PROTECT EXIST. PRIVATE PROPERTY (INCLUDING MAILBOXES, SIDEWALKS, DRIVEWAYS, CURB & GUTTER, ASPHALT PAVEMENT, IRRIGATION LINES, LANDSCAPING, ETC.) FROM DAMAGE DURING CONSTRUCTION, & RE-INSTALL AS REQUIRED (NO SEPARATE PAY, SUBSIDIARY TO OTHER ITEMS), COORDINATE WITH INSPECTOR.

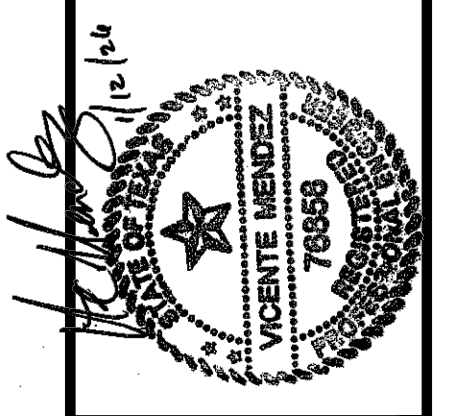


10+00      11+00      12+00      13+00      14+00      15+00



02/07/06 - REVISED AS PER ADDENDUM NO.2

AMBIOTEC  
CIVIL ENGINEERING GROUP, INC.  
5420 Renegade Line Road  
Brownsville, Texas 78526  
Fax (361)548-8399  
(361)548-8333  
FIRM No. F-4126



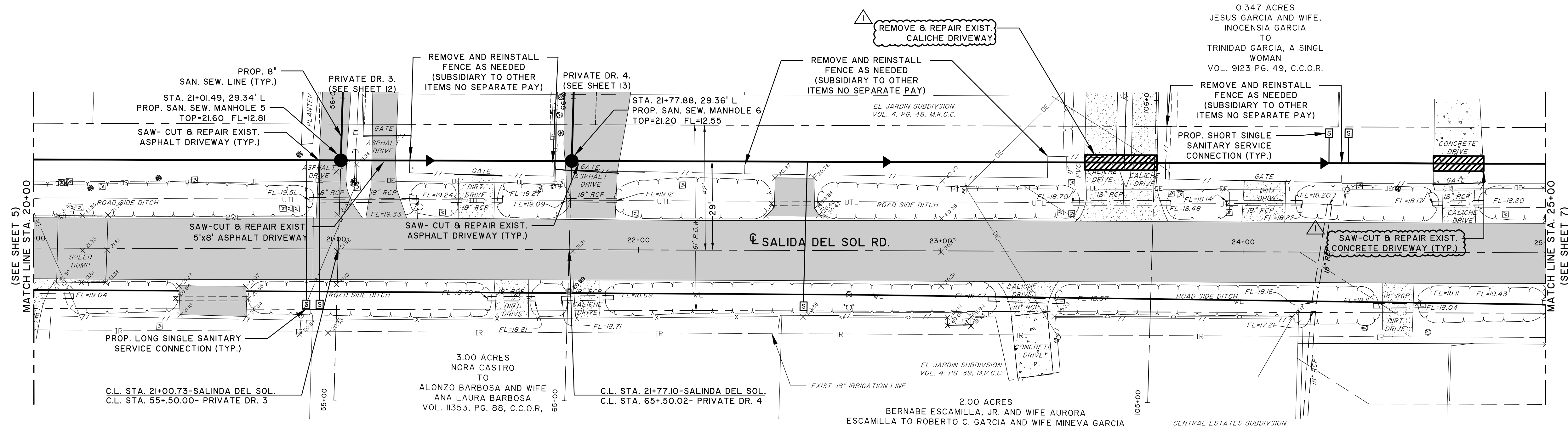
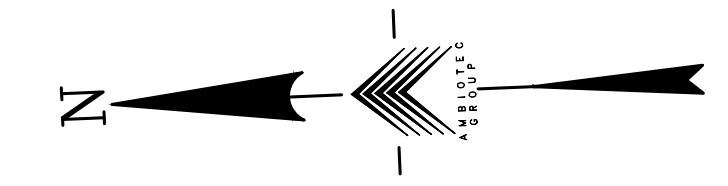
COLONIA CENTRAL ESTATES AND  
PRAXEDIS SALDIVAR  
SEWER IMPROVEMENTS PROJECT

PROPOSED PLAN & PROFILE  
SALIDA DEL SOL  
STA. 10+00 TO STA. 15+00

SCALE: 1"=20'	DATE: JANUARY 2026
DESIGN BY: E. GARCIA	
DRAWN BY: A. CUEVAS	
CHECKED BY: A. CUEVAS	
APPROVED BY: V. MENDEZ	
PROJECT NO.: 3188	

SHEET  
**4**  
OF 22



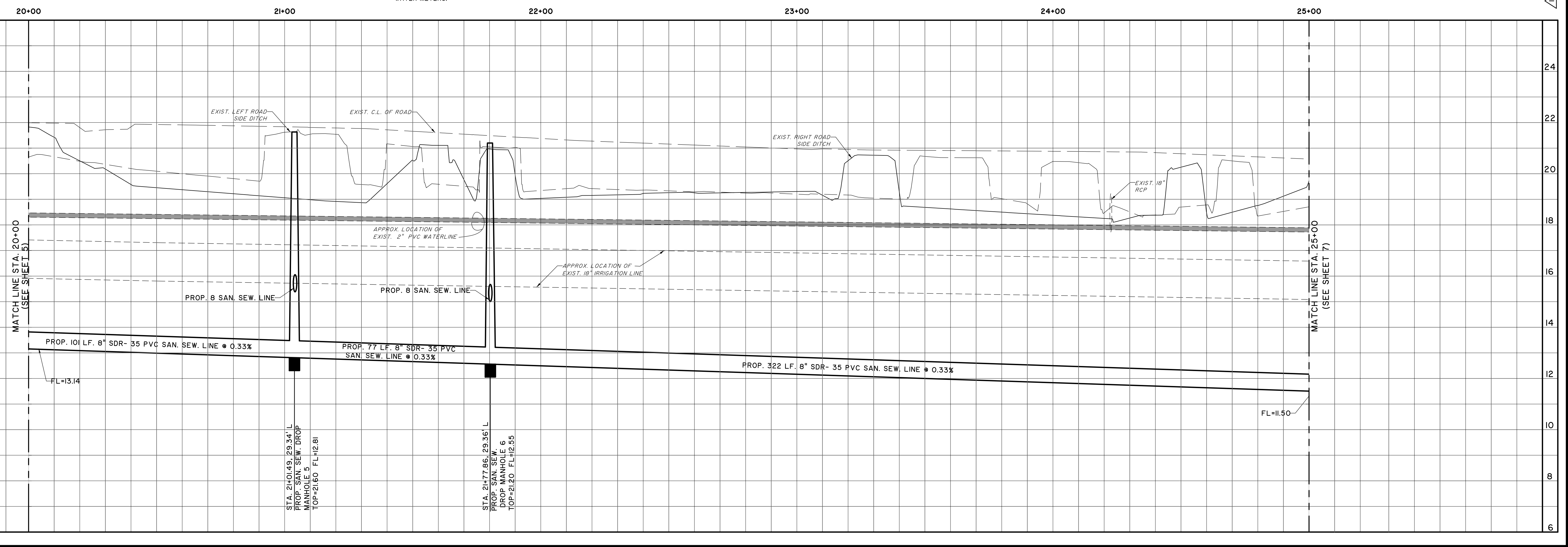
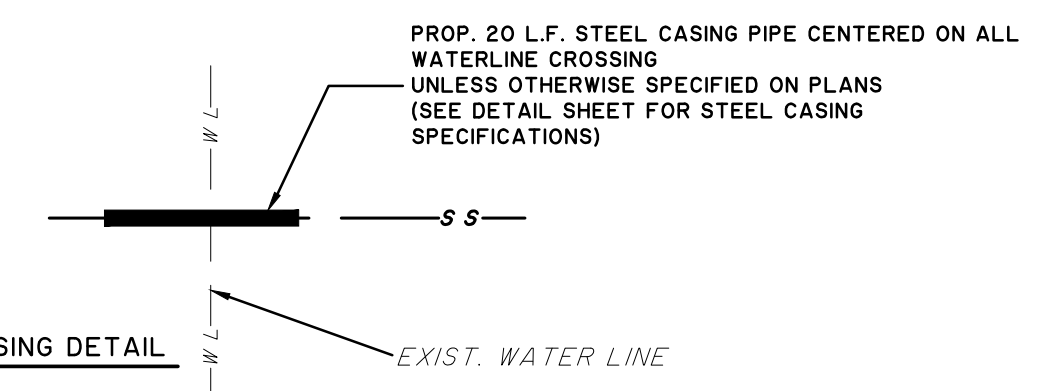


**LEGEND**

- 2WL --- EXIST. 2" WATERLINE
- IR --- EXIST. IRRIGATION LINE
- OE --- EXIST. OVERHEAD ELECTRIC LINE
- ULT --- EXIST. UNDERGROUND TELEPHONE LINE
- OT --- OVERHEAD TRANSMISSION LINE
- SSS --- PROP. SANITARY SEWER LINE
- PROP. SINGLE SANITARY SEWER SERVICE
- ⊙ EXISTING SANITARY SEWER MANHOLE
- PROPOSED SANITARY SEWER MANHOLE (SPECIFIED ON PLANS)

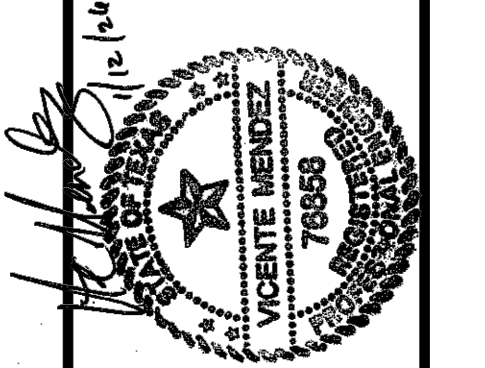
**NOTES:**

1. CONTRACTOR SHALL CENTER ONE 20 FT JOINT OF STEEL CASING AT ALL WATER LINE CROSSINGS.
2. ALL MANHOLES LOCATED WITHIN A ROADSIDE DITCH SHALL HAVE A MINIMUM COVER OF 18", AND HAVE WATER TIGHT COVERS. MANHOLES SHALL BE MARKED WITH MANHOLE MARKERS (SEE DETAIL) LOCATED AT THE RIGHT-OF-WAY. COST SUBSIDIARY TO OTHER ITEMS.
3. PROPOSED SANITARY SEWER SERVICES ARE SHOWN IN AN APPROXIMATE LOCATION AND SHALL BE VERIFIED IN THE FIELD WITH AN INSPECTOR BASED ON THE LOCATION OF HOMES. SANITARY SEWER SERVICES SHALL BE SINGLE SERVICES UNLESS DECIDED OTHERWISE BY FIELD INSPECTOR DURING CONSTRUCTION.
4. CONTRACTOR SHALL INSTALL ALL PROPOSED SANITARY SEWER SERVICES CONNECTIONS WITH AN ADEQUATE DEPTH TO ACCOMMODATE THE YARD LINE TO HAVE A SLOPE OF 1/4"-INCH PER FOOT PLUS 2" MINIMUM COVER AT THE EXISTING HOME. 6" YARD LINE SHALL BE INSTALLED BY CONTRACTOR (INC. ALL APPURTANCES TO COMPLETE)
5. CONTRACTOR SHALL KEEP 9 FT. MIN. SEPARATION BETWEEN SANITARY SEWER LINES AND WATERLINES. 9 FT. MIN. SEPARATION BETWEEN SANITARY SEWER LINES AND WATER METERS.
6. WHERE THE PROPOSED SANITARY SEWER LINE IS PLACED WITHIN THE ROADWAY, CONTRACTOR SHALL BACKFILL PIPE & OVERLAY THE ENTIRE WIDTH OF THE ROAD UPON COMPLETION OF THE PIPE WORK AS PER DETAILS ON SHEET 21.
7. ALL EXISTING DRIVEWAYS SHALL BE OPEN CUT IN A NEAT STRAIGHT LINE, AND REPAIRED ON A LIKE FOR LIKE BASIS. ALL CONFLICTING RCP CULVERTS SHALL BE REMOVED AND REINSTALLED AS NEEDED. BOTH ITEMS ARE SUBSIDIARY TO OTHER ITEMS, NO SEPARATE PAY.
8. CONTRACTOR SHALL RESTORE ALL DRAINAGE SWALES TO ORIGINAL CONDITIONS OR BETTER.
9. WATER SERVICE REPLACEMENT OR REPAIR SUBSIDIARY TO OTHER LINE ITEM'S PRICE PER L.F. (LINEAR FOOT) OF SEWER LINE. NO SEPARATE PAY.
10. CONTRACTOR SHALL VERIFY LOCATION OF ALL EXISTING UTILITIES BEFORE BEGINNING CONSTRUCTION.
11. CONTRACTOR TO FIELD VERIFY SIZE OF EXIST. WATERLINE PRIOR TO CONSTRUCTION.
12. CONTRACTOR SHALL SAW CUT ALL EXISTING IMPROVEMENTS IN A NEAT STRAIGHT LINE ALONG BACK OF CURB LINE (SUBSIDIARY TO CURB & GUTTER ITEM, NO SEPARATE PAY)
13. CONTRACTOR SHALL SAW CUT ALL DRIVEWAYS TO THE NEAREST JOINT IN A NEAT STRAIGHT LINE ON A LIKE FOR LIKE BASIS IN ACCORDANCE WITH ADA REGULATIONS.
14. CONTRACTOR SHALL PROTECT EXIST. PRIVATE PROPERTY (INCLUDING MAILBOXES, SIDEWALKS, DRIVEWAYS, CURB & GUTTER, ASPHALT PAVEMENT, IRRIGATION LINES, LANDSCAPING, ETC.) FROM DAMAGE DURING CONSTRUCTION, & RE-INSTALL AS REQUIRED (NO SEPARATE PAY, SUBSIDIARY TO OTHER ITEMS). COORDINATE WITH INSPECTOR.



02/10/26 - REVISED AS PER ADDENDUM NO.2

**AMBIOTEC**  
CIVIL ENGINEERING GROUP, INC.  
5420 Regades Line Road  
Brownsville, Texas 78528  
Fax (956)548-9399  
(956)548-9333  
FIRM No. F-4126

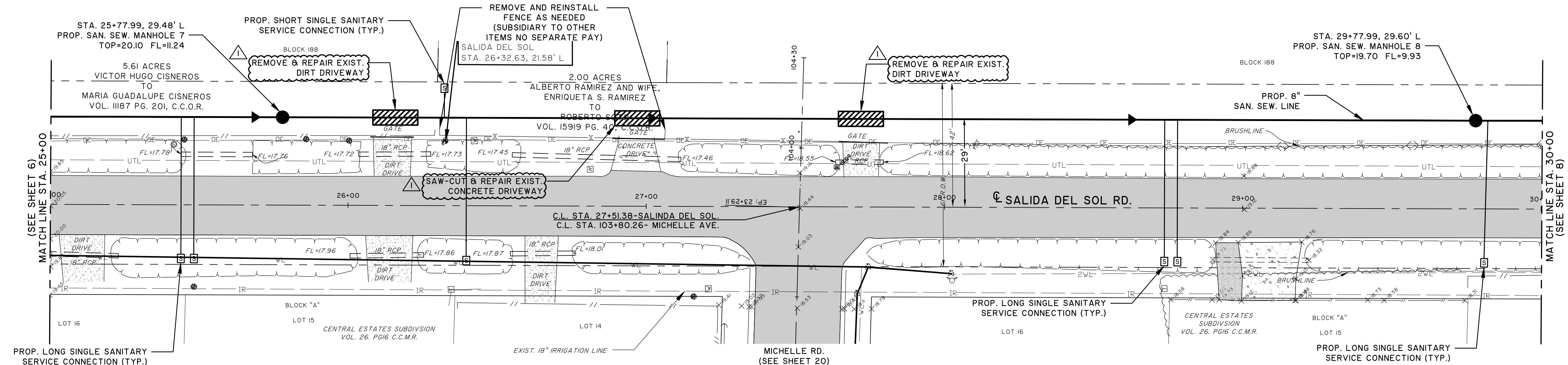
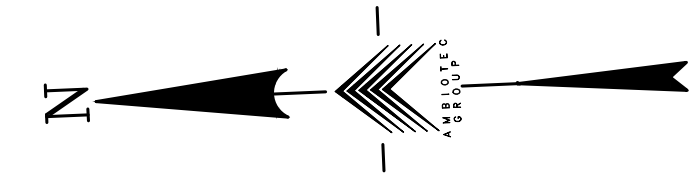


**COLONIA CENTRAL ESTATES AND PRAXEDIS SALDIVAR**  
SEWER IMPROVEMENTS PROJECT

PROPOSED PLAN & PROFILE  
**SALIDA DEL SOL**  
STA. 20+00 TO STA. 25+00

SCALE: 1"=20'	DATE: JANUARY 2026
DESIGN BY: E. GARCIA	
DRAWN BY: A. CUEVAS	
CHECKED BY: A. CUEVAS	
APPROVED BY: V. MENDEZ	
PROJECT NO.: 3188	

**SHEET**  
**6**  
OF 22

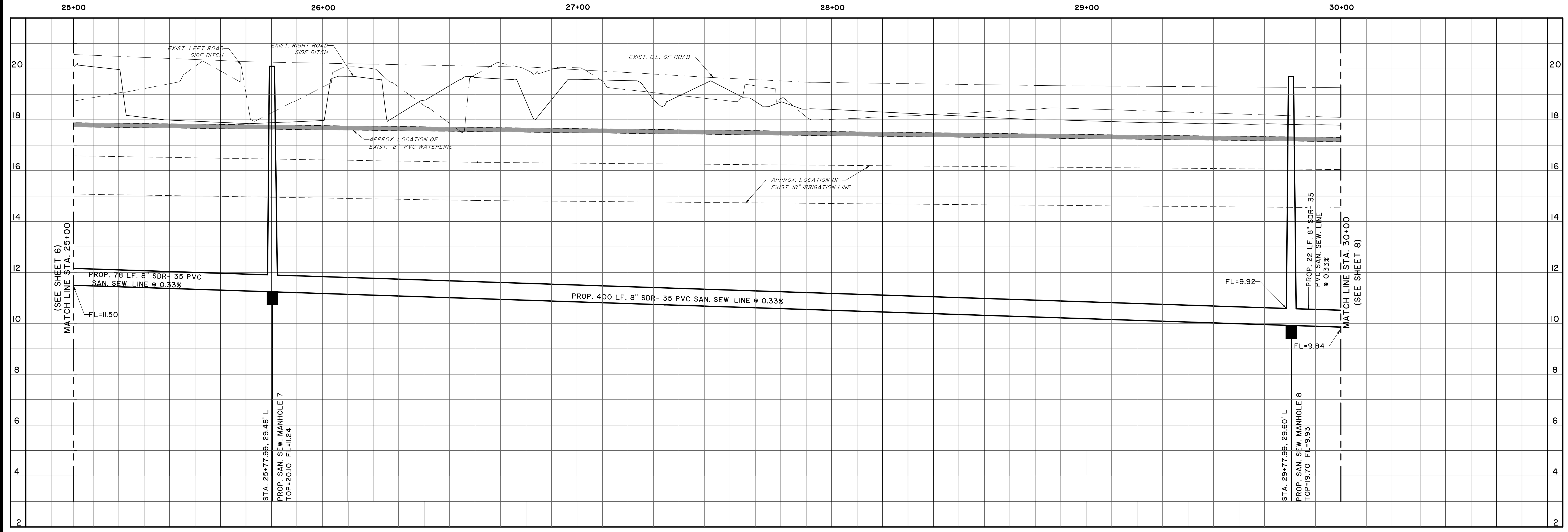
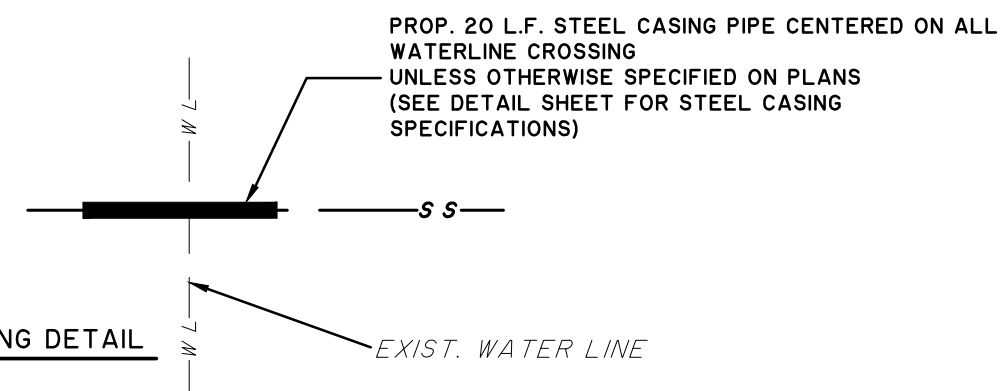


**LEGEND**

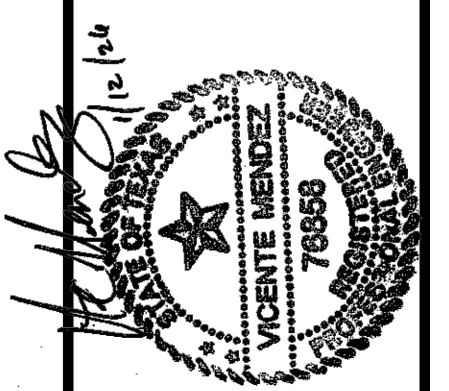
--- 2WL ---	EXIST. 2" WATERLINE
--- IR ---	EXIST. IRRIGATION LINE
--- OE ---	EXIST. OVERHEAD ELECTRIC LINE
--- UTL ---	EXIST. UNDERGROUND TELEPHONE LINE
--- OT ---	OVERHEAD TRANSMISSION LINE
---	PROP. SANITARY SEWER LINE
□	PROP. SINGLE SANITARY SEWER SERVICE
⊙	EXISTING SANITARY SEWER MANHOLE
●	PROPOSED SANITARY SEWER MANHOLE (SPECIFIED ON PLANS)

**NOTES:**

- CONTRACTOR SHALL CENTER ONE 20 FT JOINT OF STEEL CASING AT ALL WATER LINE CROSSINGS.
- ALL MANHOLES LOCATED WITHIN A ROADSIDE DITCH SHALL HAVE A MINIMUM COVER OF 18", AND HAVE WATER TIGHT COVERS. MANHOLES SHALL BE MARKED WITH MANHOLE MARKERS (SEE DETAIL) LOCATED AT THE RIGHT-OF-WAY. COST SUBSIDIARY TO OTHER ITEMS.
- PROPOSED SANITARY SEWER SERVICES ARE SHOWN IN AN APPROXIMATE LOCATION AND SHALL BE VERIFIED IN THE FIELD WITH AN INSPECTOR BASED ON THE LOCATION OF HOMES. SANITARY SEWER SERVICES SHALL BE SINGLE SERVICES UNLESS DECIDED OTHERWISE BY FIELD INSPECTOR DURING CONSTRUCTION.
- CONTRACTOR SHALL INSTALL ALL PROPOSED SANITARY SEWER SERVICES CONNECTIONS WITH AN ADEQUATE DEPTH TO ACCOMMODATE THE YARD LINE TO HAVE A SLOPE OF 1/4"-INCH PER FOOT PLUS 2' MINIMUM COVER AT THE EXISTING HOME. 6" YARD LINE SHALL BE INSTALLED BY CONTRACTOR (INC. ALL APPURTANCES TO COMPLETE)
- CONTRACTOR SHALL KEEP 9 FT. MIN. SEPARATION BETWEEN SANITARY SEWER LINES AND WATERLINES. 9 FT. MIN. SEPARATION BETWEEN SANITARY SEWER LINES AND WATER METERS.
- WHERE THE PROPOSED SANITARY SEWER LINE IS PLACED WITHIN THE ROADWAY, CONTRACTOR SHALL BACKFILL PIPE & OVERLAY THE ENTIRE WIDTH OF THE ROAD UPON COMPLETION OF THE PIPE WORK AS PER DETAILS ON SHEET 21.
- ALL EXISTING DRIVEWAYS SHALL BE OPEN CUT IN A NEAT STRAIGHT LINE, AND REPAIRED ON A LIKE FOR LIKE BASIS. ALL CONFLICTING RCP CULVERTS SHALL BE REMOVED AND REINSTALLED AS NEEDED. BOTH ITEMS ARE SUBSIDIARY TO OTHER ITEMS, NO SEPARATE PAY.
- CONTRACTOR SHALL RESTORE ALL DRAINAGE SWALES TO ORIGINAL CONDITIONS OR BETTER.
- WATER SERVICE REPLACEMENT OR REPAIR SUBSIDIARY TO OTHER LINE ITEM'S PRICE PER L.F.(LINEAR FOOT) OF SEWER LINE. NO SEPARATE PAY.
- CONTRACTOR SHALL VERIFY LOCATION OF ALL EXISTING UTILITIES BEFORE BEGINNING CONSTRUCTION.
- CONTRACTOR TO FIELD VERIFY SIZE OF EXIST. WATERLINE PRIOR TO CONSTRUCTION.
- CONTRACTOR SHALL SAW CUT ALL EXISTING IMPROVEMENTS IN A NEAT STRAIGHT LINE ALONG BACK OF CURB LINE (SUBSIDIARY TO CURB & GUTTER ITEM, NO SEPARATE PAY)
- CONTRACTOR SHALL SAW CUT ALL DRIVEWAYS TO THE NEAREST JOINT IN A NEAT STRAIGHT LINE ON A LIKE FOR LIKE BASIS IN ACCORDANCE WITH ADA REGULATIONS.
- CONTRACTOR SHALL PROTECT EXIST. PRIVATE PROPERTY INCLUDING MAILBOXES, SIDEWALKS, DRIVEWAYS, CURB & GUTTER, ASPHALT PAVEMENT, IRRIGATION LINES, LANDSCAPING, ETC.) FROM DAMAGE DURING CONSTRUCTION, & RE-INSTALL AS REQUIRED (NO SEPARATE PAY. SUBSIDIARY TO OTHER ITEMS). COORDINATE WITH INSPECTOR.



**AMBIOTEC**  
 CIVIL ENGINEERING GROUP, INC.  
 5420 Reynolds Line Road  
 Brownsville, Texas 78528  
 Fax (956)548-9399  
 (956)548-9333  
 FIRM No. F-4126



**COLONIA CENTRAL ESTATES AND PRAXEDIS SALDIVAR**  
 SEWER IMPROVEMENTS PROJECT

PROPOSED PLAN & PROFILE  
**SALIDA DEL SOL**  
 STA. 25+00 TO STA. 30+00

SCALE: 1"=20'	DATE: JANUARY 2026
DESIGN BY: E. GARCIA	
DRAWN BY: A. CUEVAS	
CHECKED BY: A. CUEVAS	
APPROVED BY: V. MENDEZ	
PROJECT NO.: 3188	

**SHEET**  
**7**  
 OF 22